

MULTIFUNCTIONAL DIGITAL SYSTEMS

# SAP R/3 Printing Device Type File Installation Guide

---

 **e-STUDIO555/655/755/855**



---

## ■ Trademarks

SAP, R/3, mySAP, mySAP.com, xApps, xApp, SAP NetWeaver, and other SAP products and services mentioned herein as well as their respective logos are trademarks or registered trademarks of SAP AG in Germany and in several other countries all over the world. All other product and service names mentioned are the trademarks of their respective companies.

## ■ Warning

You may not, nor cause or permit any third party to, modify, adapt, merge, translate, reverse compile, reverse assemble, or reverse engineer the Software. You may not use the Software, except in accordance with this license. No title to the intellectual property in the Software is transferred to you and full ownership is retained by TTEC or its suppliers. Source code of the Software is not licensed to you. You will be held legally responsible for any copyright infringement, unauthorized transfer, reproduction or use of the Software or its documentation.



# CONTENTS

---

Trademarks .....	1
Warning .....	1

## Chapter 1

---

Introduction.....	6
SAP Printing Environment.....	6

## Chapter 2

---

Installation.....	8
-------------------	---

## Chapter 3

---

Verification of Device Type File .....	14
--	----

## Chapter 4

---

Creation of Output Device .....	18
---------------------------------	----

## Chapter 5

---

Verification of Output Device .....	24
-------------------------------------	----

## Chapter 6

---

Editing the Device Type File .....	28
------------------------------------	----

## Chapter 7

---

<b>Toshiba e-STUDIO855Series Specific Features and Configuration .....</b>	<b>36</b>
Input Tray Selection.....	36
Output Tray Selection.....	36
Paper Selection .....	36
Duplex Selection.....	36
Orientation Selection .....	37
Hole Punch .....	37
Stapling Function.....	37
Private Print .....	37
Proof Print .....	37
Hold Print.....	37
Booklet and Saddle Stitch .....	38
Department Code .....	38
BOX Mode .....	38
Inserter Option.....	38



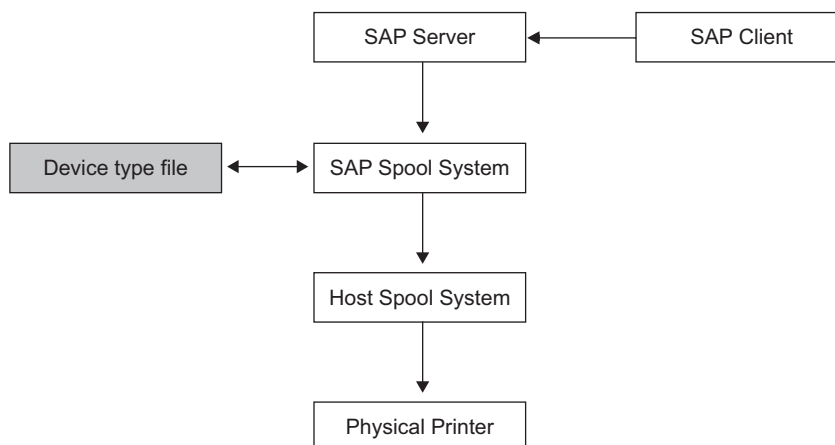
1

## Introduction

---

This document describes the step-wise procedure to install and configure the device type for Toshiba e-STUDIO855Series printers in SAP R/3. SAP administrator can implement the printer specific features by inserting the necessary PJI/PCL commands given in the Device configuration section. The version of the SAP environment used is 4.7.

### ■ SAP Printing Environment



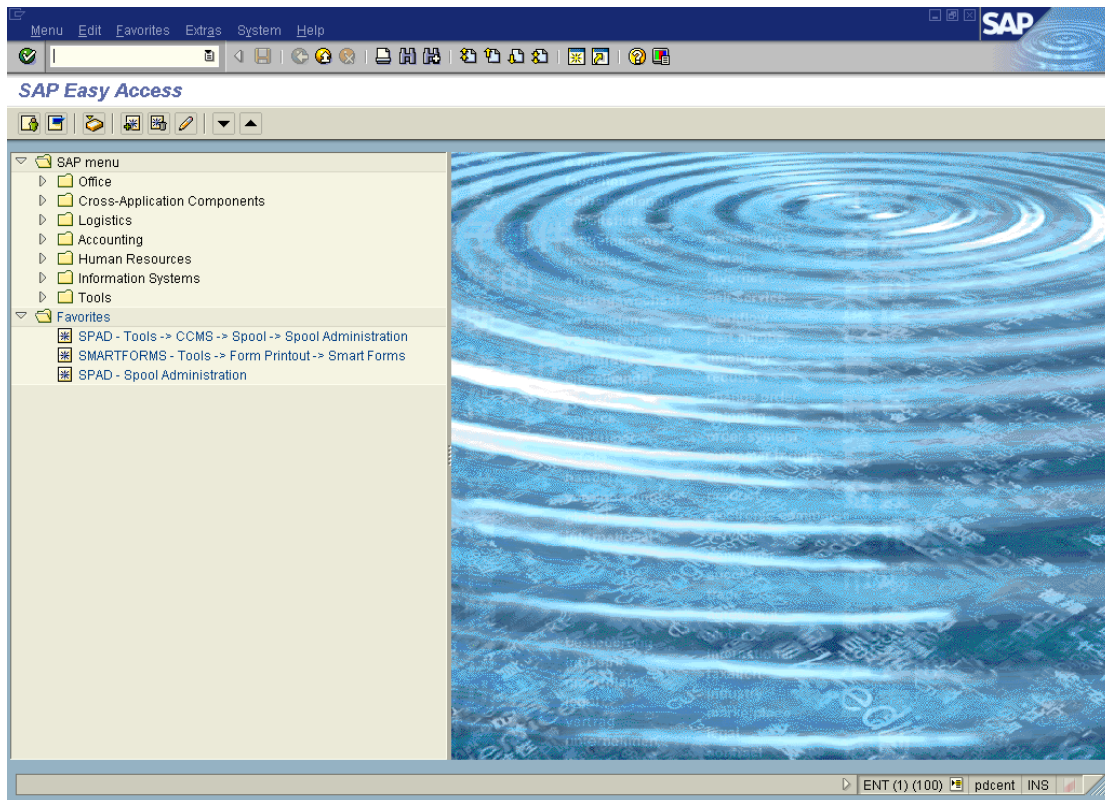
1. SAP Client raises the print Request.
2. SAP Server will pass on the request to SAP spool system based on type of printer selected by the Client program.
3. SAP spool system will consult Device type file (.PRI File) corresponding to the output device. Based on configuration and control information present in Device type file, it will generate Printing data and Control Information.
4. Based on the "Access method" configured for the output device, SAP Printing Subsystem will operate in the respective way.



2

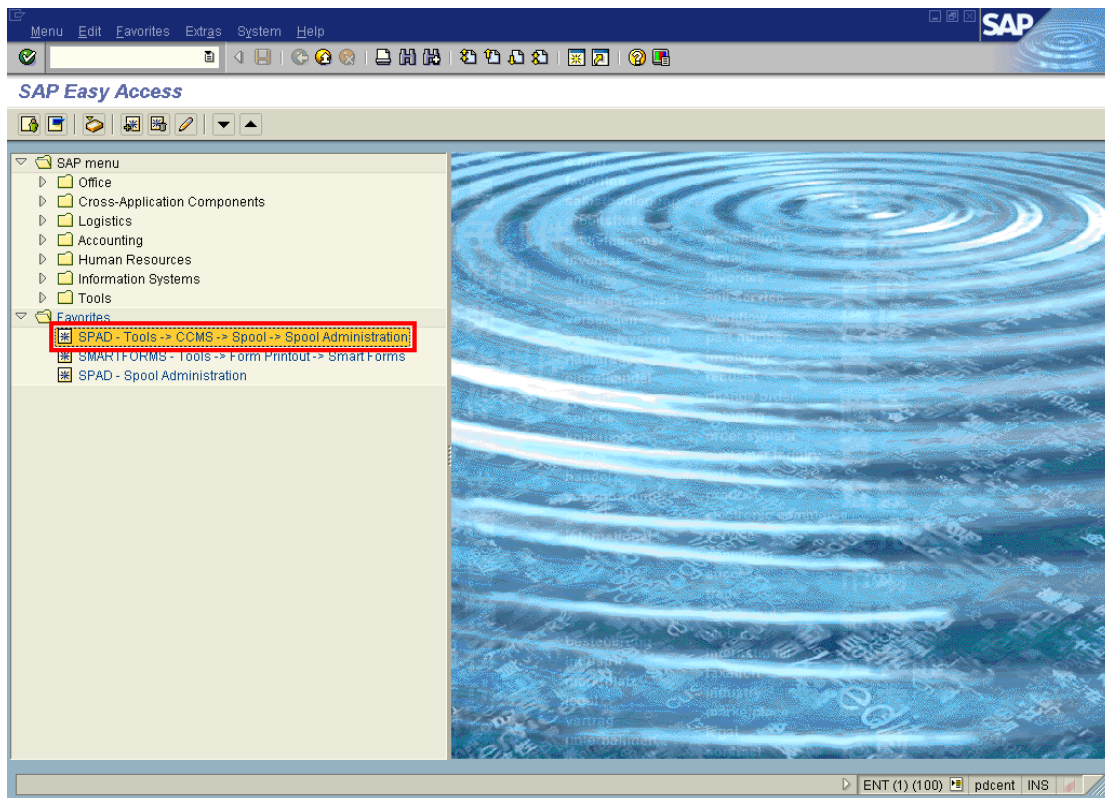
## Installation

To install a new device type into SAP, follow the procedure described below.  
After you have logged on to SAP, the following screen is displayed.



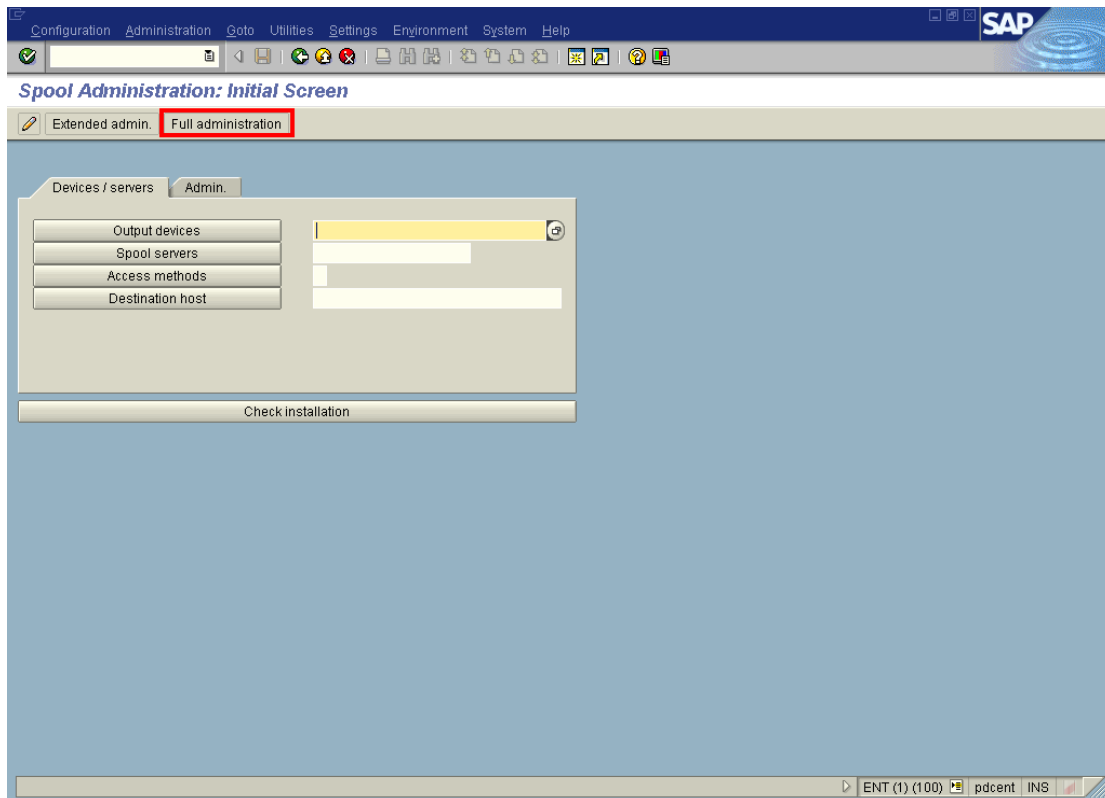
© SAP is a trademark of SAP AG.

Click on the **“Spool Administration”** tab.



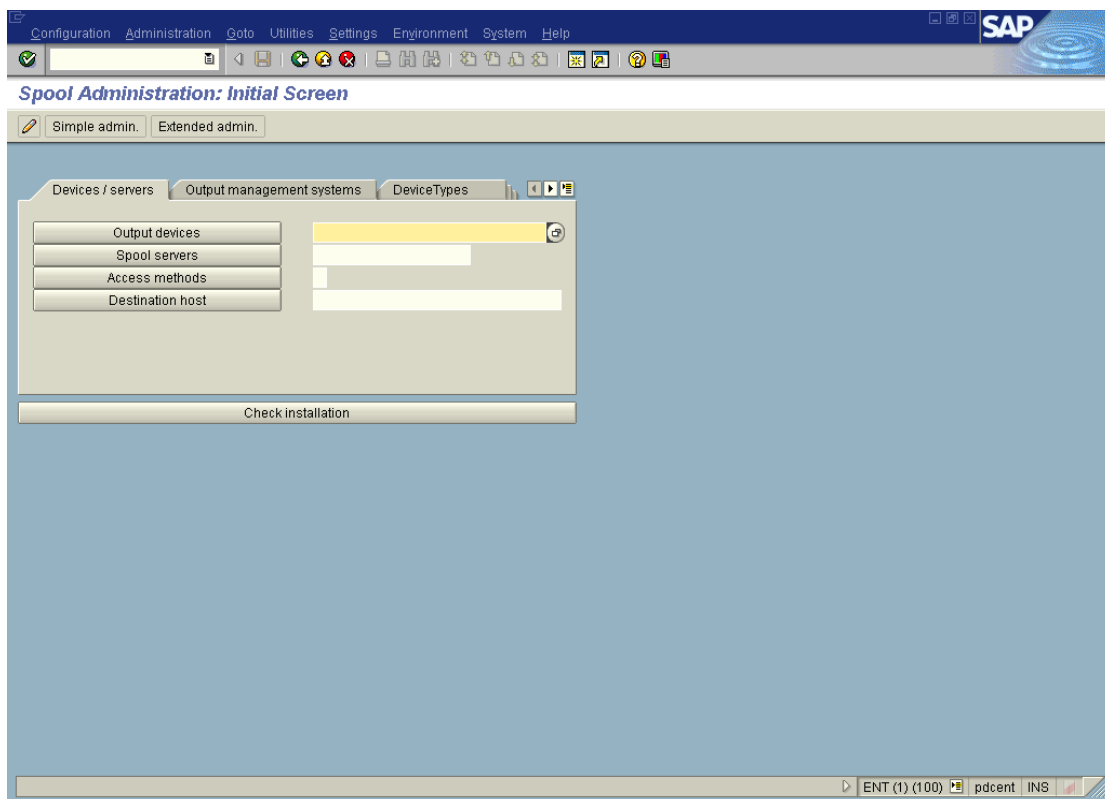
© SAP is a trademark of SAP AG.

Once you press **“Enter”**, the following screen is displayed.



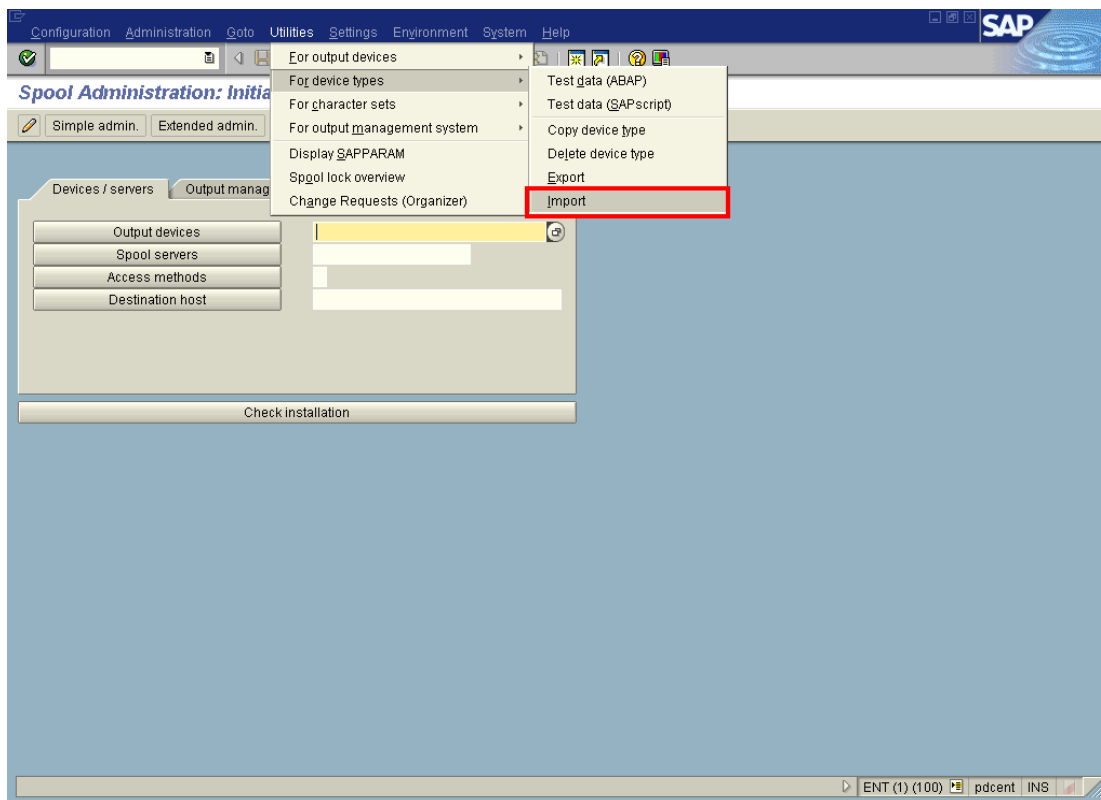
© SAP is a trademark of SAP AG.

Press on the push-button **“Full administration”**. The following screen is displayed.



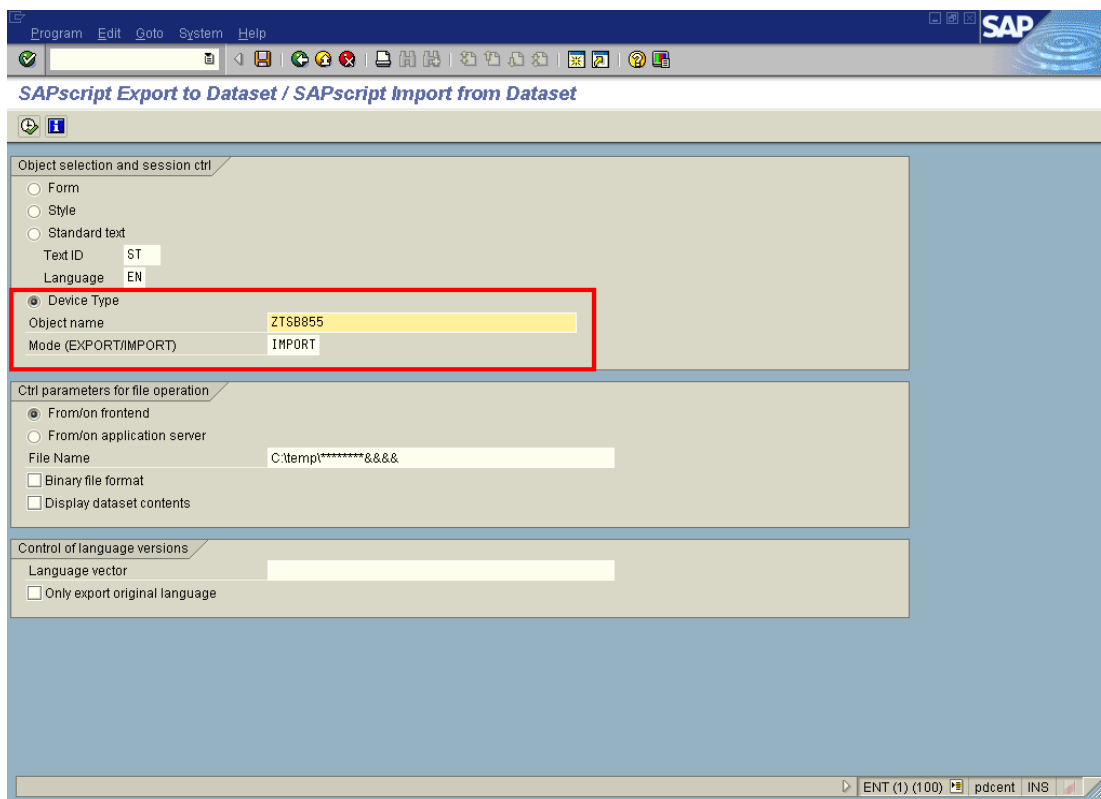
© SAP is a trademark of SAP AG.

In the menu bar, go to **“Utilities”** -> **“For device types”** -> **“Import”** as displayed in the following screen.



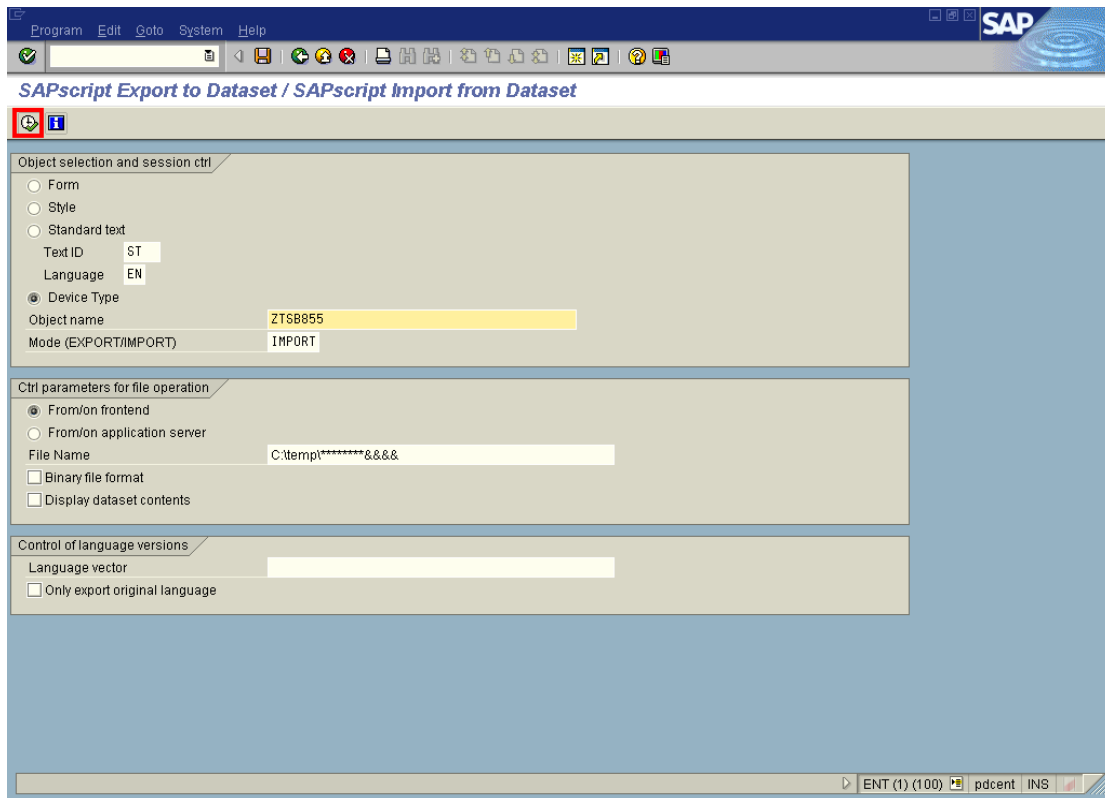
© SAP is a trademark of SAP AG.

Once you press “**Import**”, the following screen is displayed.



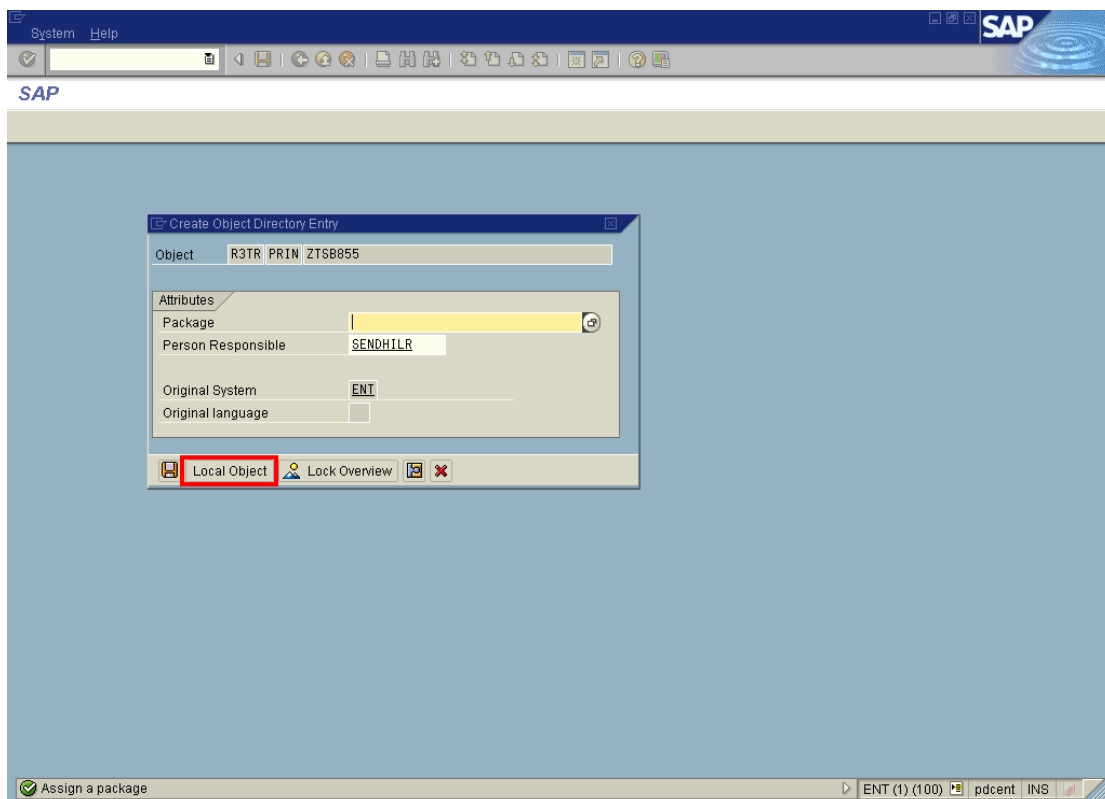
© SAP is a trademark of SAP AG.

Select the radio button “**Device Type**” and enter the name of the device type (.PRI) file without file extension in the input field box “**Object name**” (E.g. if the device type file name is ZTSB855.pri, enter only ZTSB855) as shown in the screen above. Make sure the entry in the field “**Mode (EXPORT/IMPORT)**” is written as “**IMPORT**”.



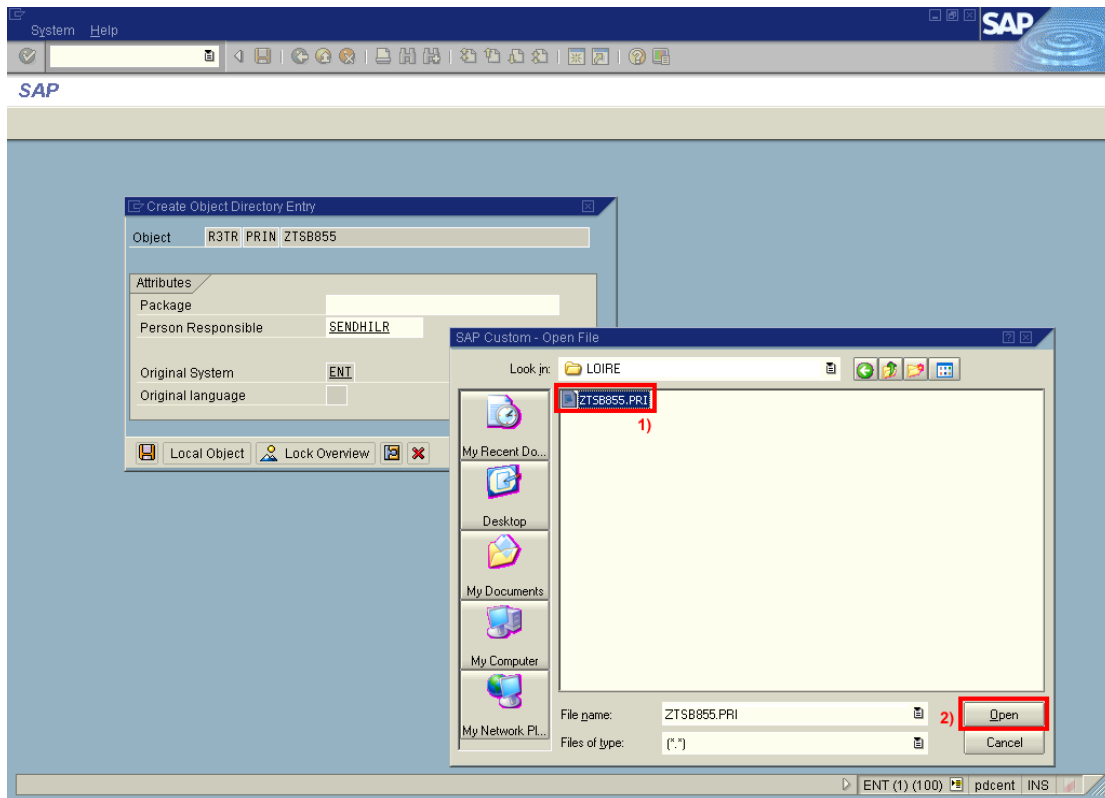
© SAP is a trademark of SAP AG.

Press “F8” to proceed with import. The following screen will be displayed.



© SAP is a trademark of SAP AG.

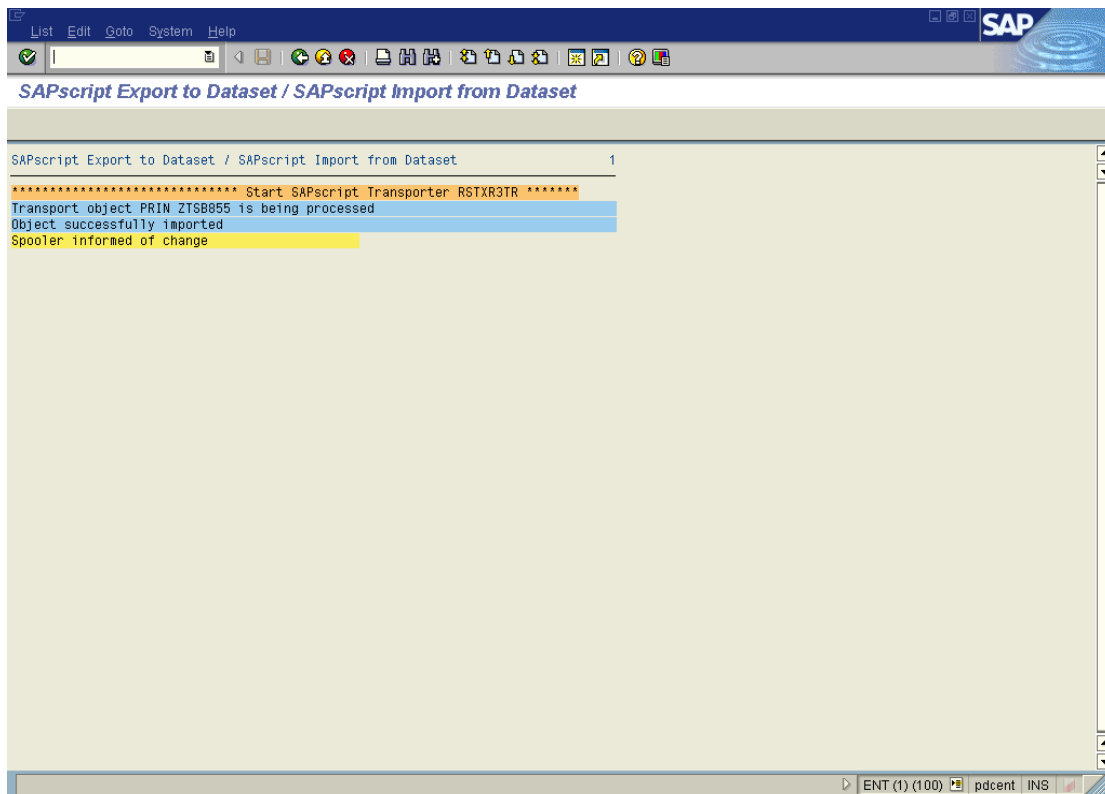
To locate the ZTSB855.PRI on local system, press “Local Object”. The following screen will be displayed.



© SAP is a trademark of SAP AG.

1. Locate the ZTSB855.pri file.
2. Press **"Open"**.  
Import process will start as soon as **"Open"** is pressed.

On successful completion of import, the following message would be displayed.



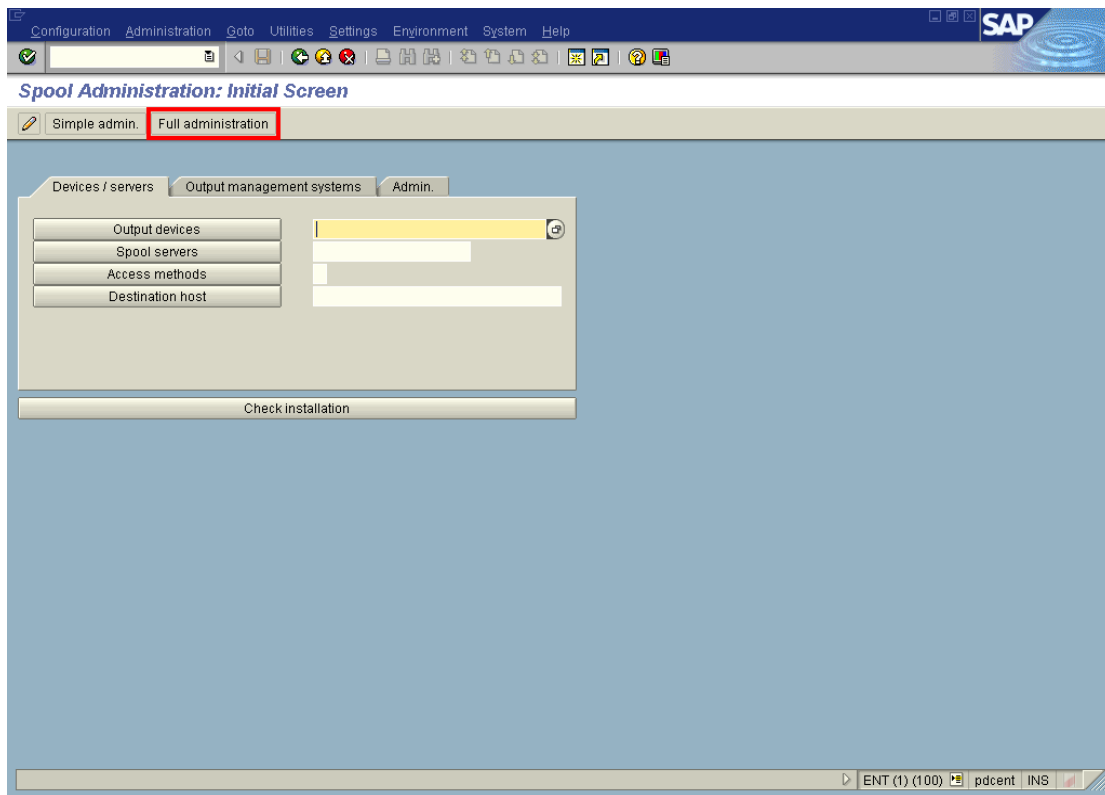
© SAP is a trademark of SAP AG.

3

## Verification of Device Type File

Once the device type is imported, it needs to be verified whether the newly imported device type appears in the standard list of all device types in SAP R/3 or not. To verify this same, follow the steps given below.

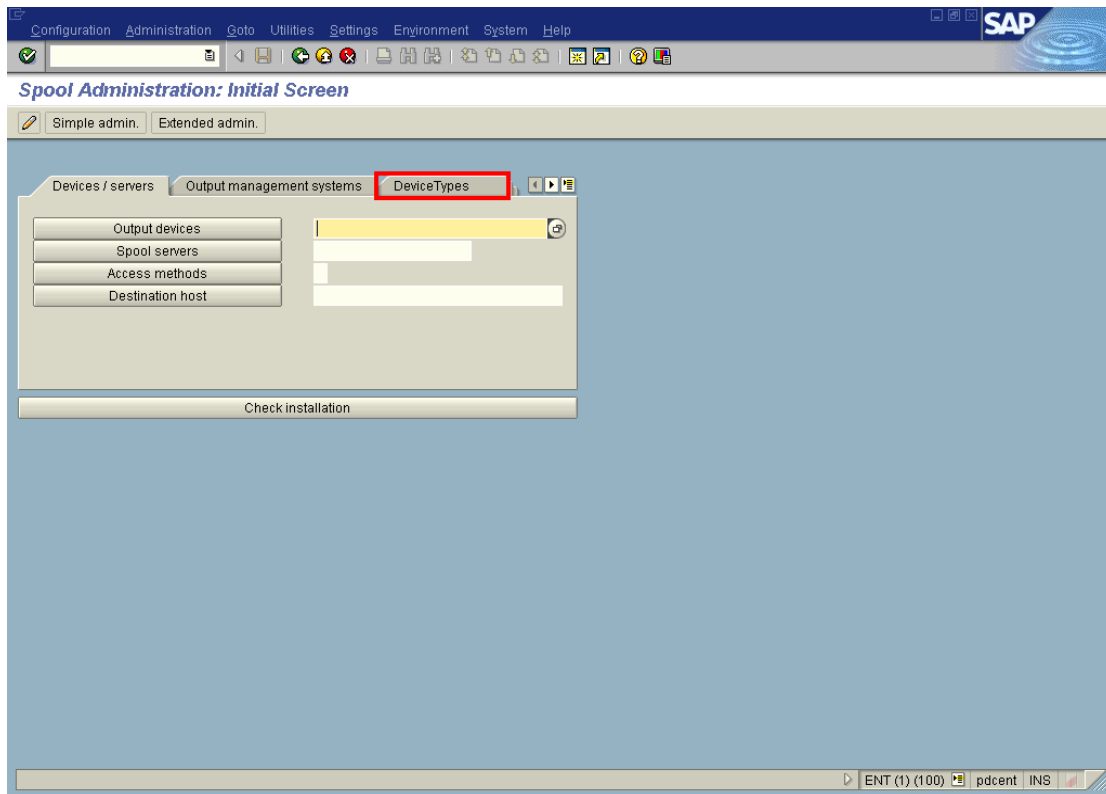
In the initial screen of SAP, type the transaction code “**SPAD**” in the command window and press “**Enter**”, the following screen is displayed.



© SAP is a trademark of SAP AG.

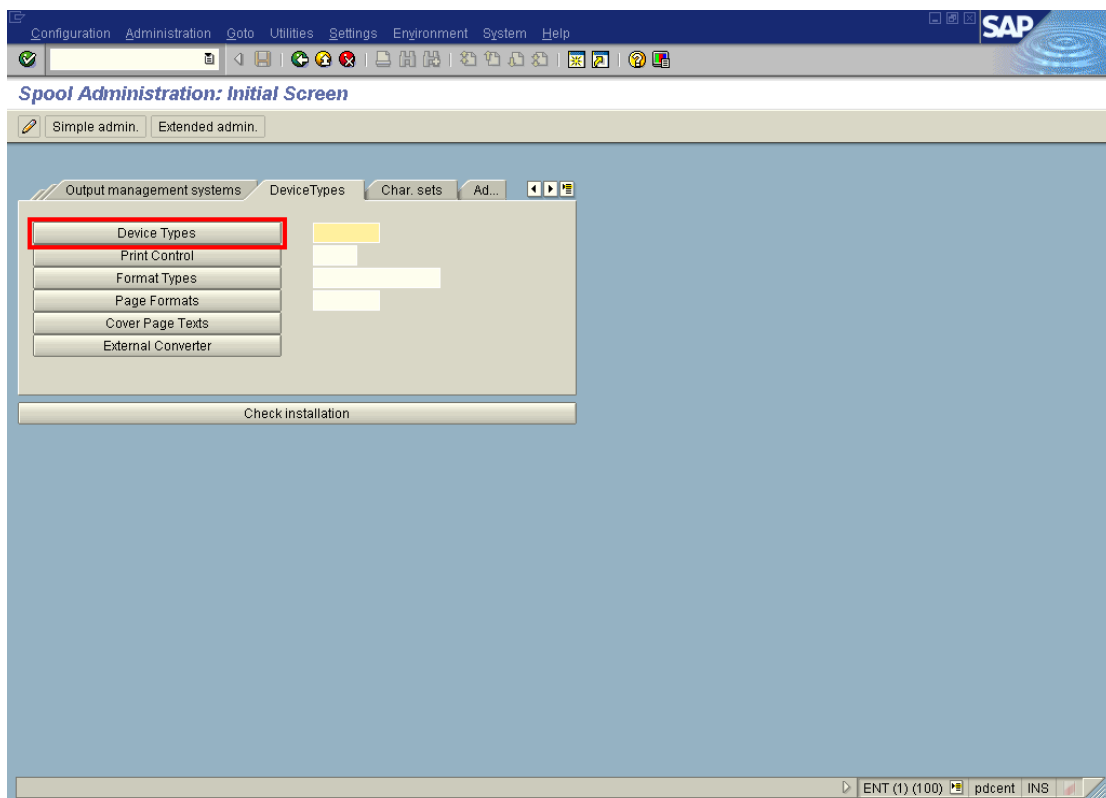
Click on “**Full administration**” and the following screen will be displayed.





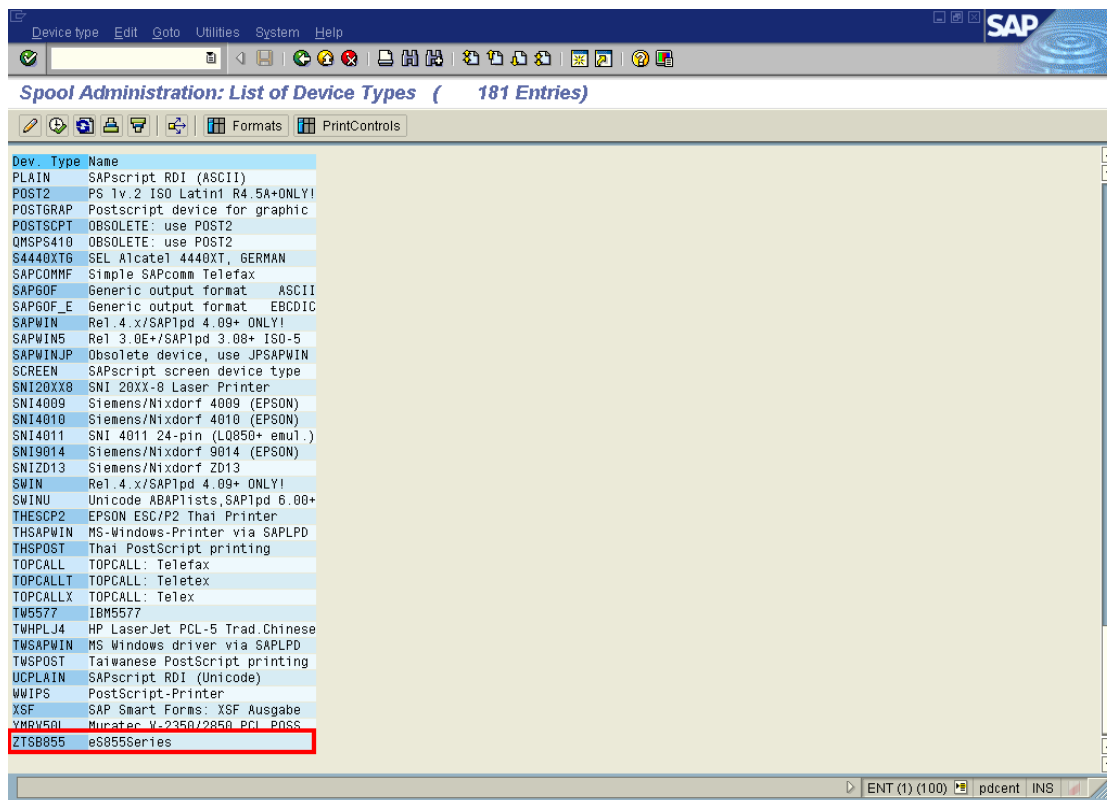
© SAP is a trademark of SAP AG.

Click on the **Device Types** tab.



© SAP is a trademark of SAP AG.

On clicking on the **“Device Types”** button, list of device types will be displayed as in the following screen.



© SAP is a trademark of SAP AG.

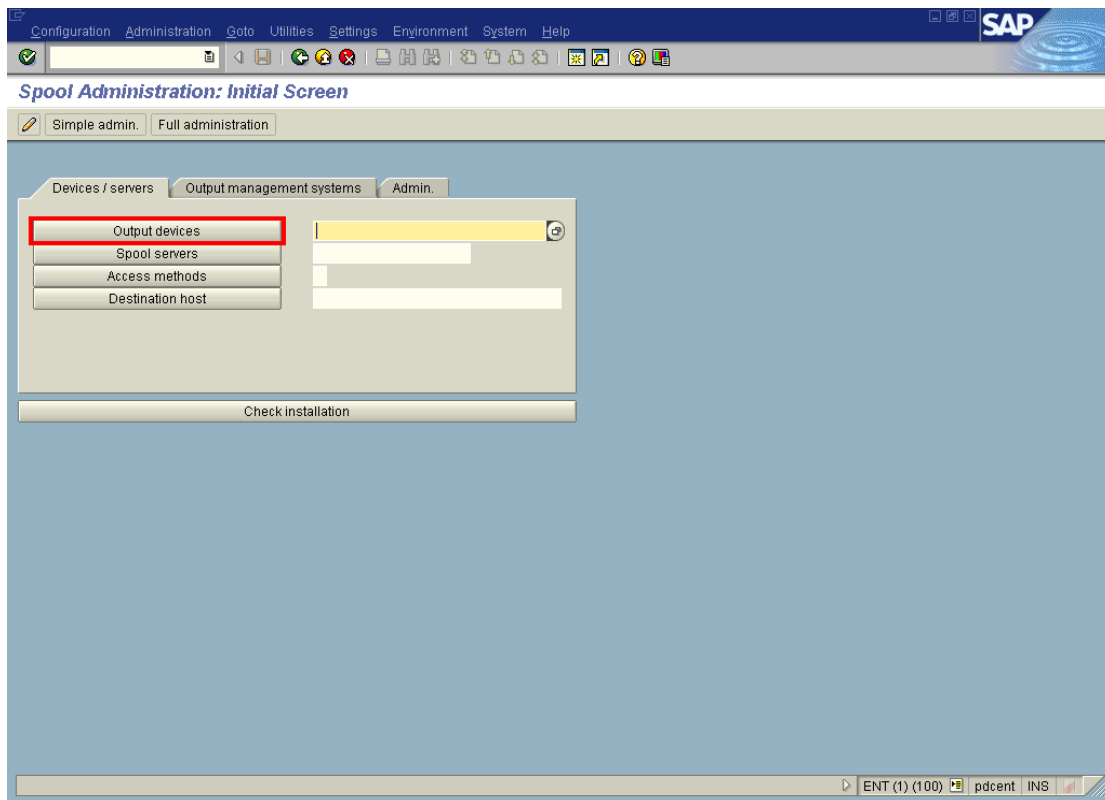
The newly imported device type **ZTSB855** should appear in this list of device type. If the **ZTSB855** is not displayed, it implies that import has not been successful for which the Installation procedure described earlier needs to be repeated and verified.

4

## Creation of Output Device

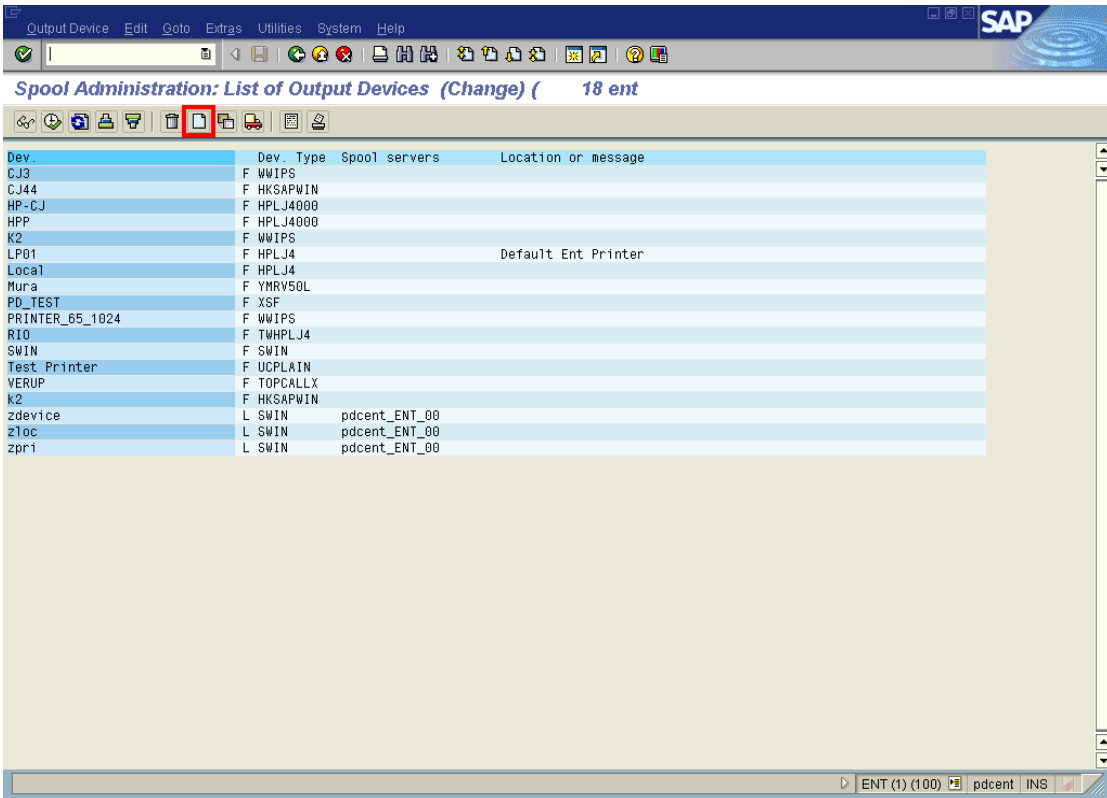
In SAP R/3, a device type needs to be assigned to an Output device to utilise its printing features. Follow the procedure described below to create an output device and assign a device type to it.

In the initial screen of SAP, type the transaction code “**SPAD**” in the command window and press “**Enter**”, the following screen is displayed.



© SAP is a trademark of SAP AG.

Click on the “**Output devices**” and the following screen is displayed.



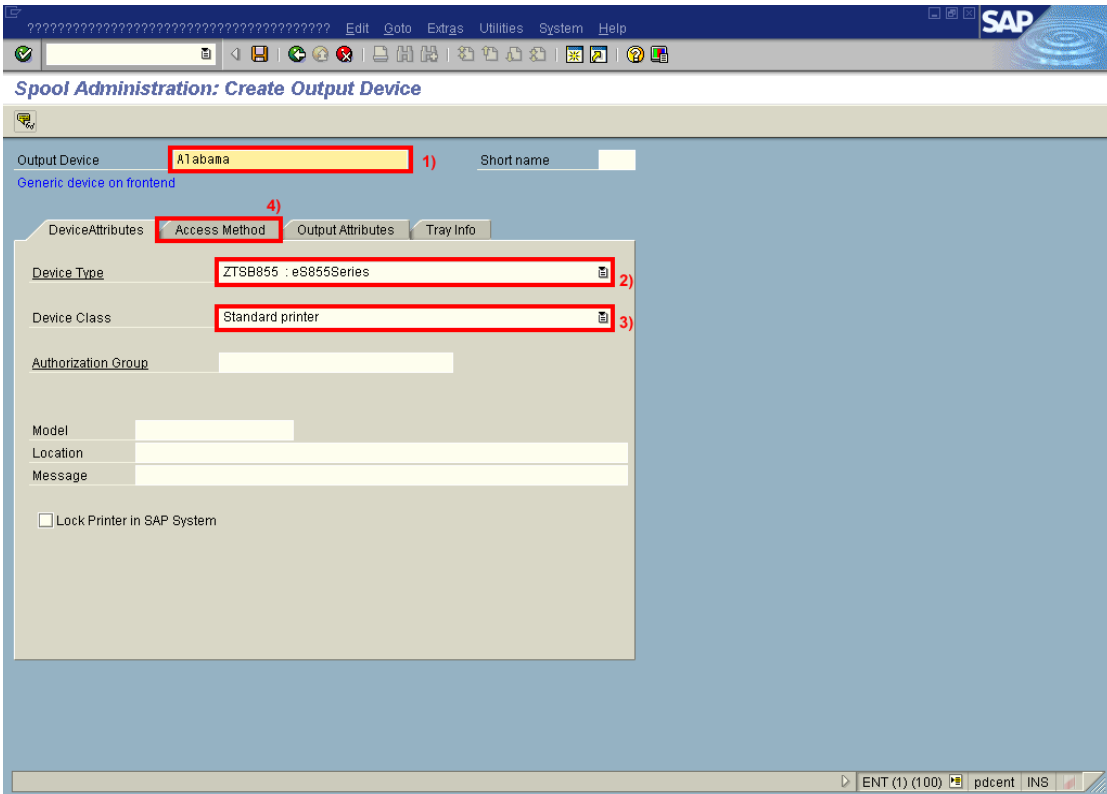
**Spool Administration: List of Output Devices (Change) ( 18 ent**

Dev.	Dev. Type	Spool servers	Location or message
CJ3	F WWIPS		
CJ44	F HKSAPWIN		
HP-CJ	F HPLJ4000		
HPP	F HPLJ4000		
K2	F WWIPS		
LP01	F HPLJ4		Default Ent Printer
Local1	F HPLJ4		
Mura	F YMRV50L		
PD_TEST	F XSF		
PRINTER_65_1024	F WWIPS		
R10	F TWHPLJ4		
SWIN	F SWIN		
Test Printer	F UCPLAIN		
VERUP	F TOPCALLX		
k2	F HKSAPWIN		
zdevice	L SWIN	pdcent_ENT_00	
zloc	L SWIN	pdcent_ENT_00	
zpr1	L SWIN	pdcent_ENT_00	

ENT (1) (100) pdcent INS

© SAP is a trademark of SAP AG.

Press on the “**Create**” button, the following screen will be displayed.



**Spool Administration: Create Output Device**

Output Device **Alabama** 1) Short name

Generic device on frontend

DeviceAttributes **Access Method** 4) OutputAttributes Tray Info

Device Type **ZTSB855 : eS855Series** 2)

Device Class **Standard printer** 3)

Authorization Group

Model

Location

Message

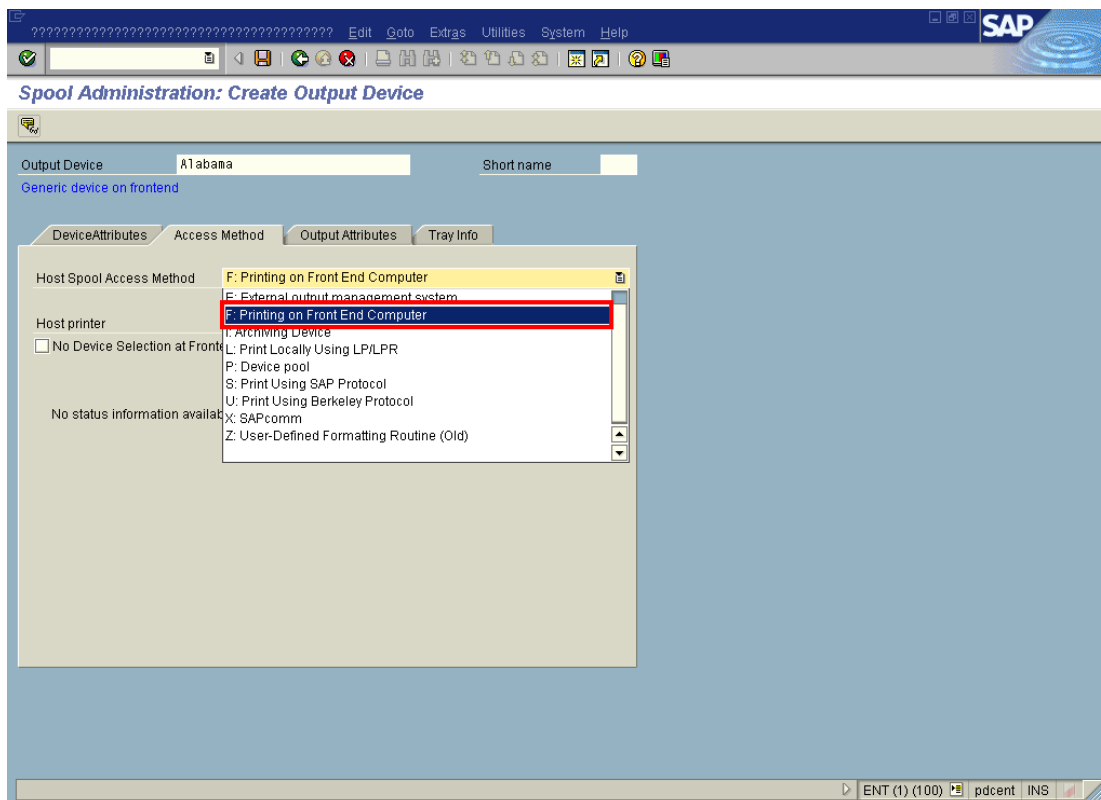
☐ Lock Printer in SAP System

ENT (1) (100) pdcent INS

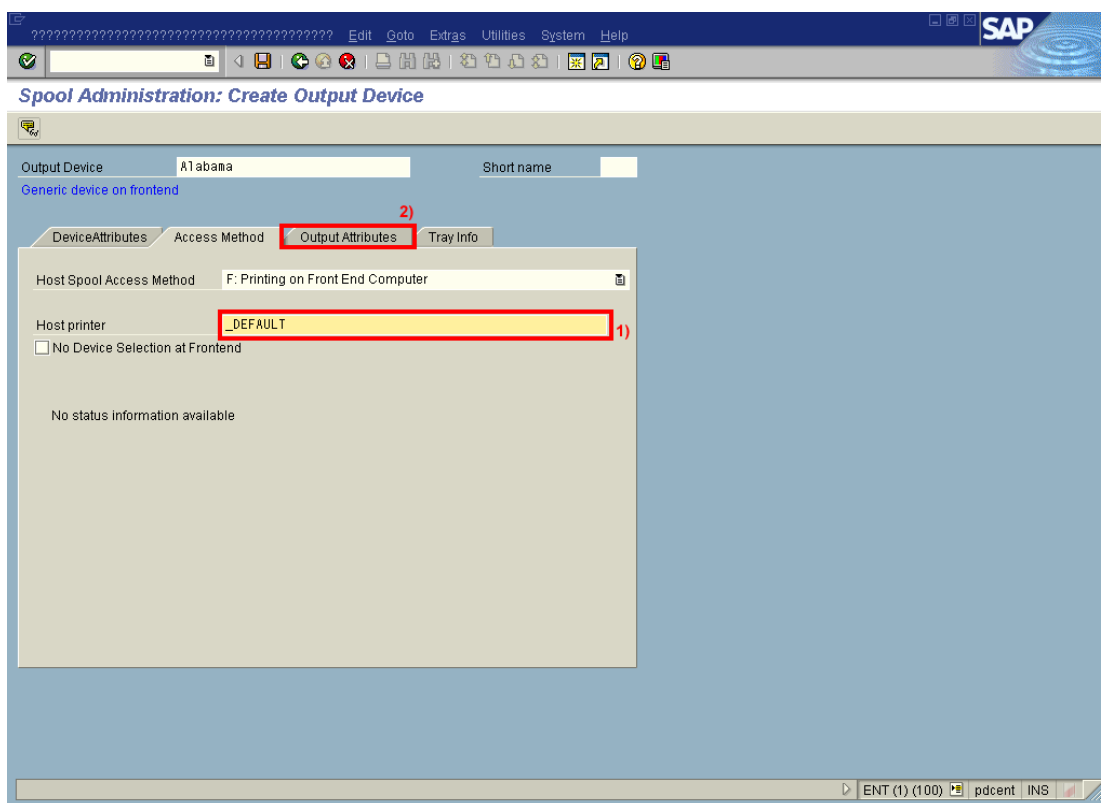
© SAP is a trademark of SAP AG.

1. Enter the printer name (**Alabama** in the above mentioned example)
2. Associate output device **ZTSB855: eS855Series** device type.
3. Make sure Device class is “Standard printer”.
4. Click “**Access Method**” to visit the next part of output device configuration as shown in the following screen.

Subsequently choose the appropriate “**Host Spool Access Method**” in the screen displayed below. Here it is selected as “**F**”.

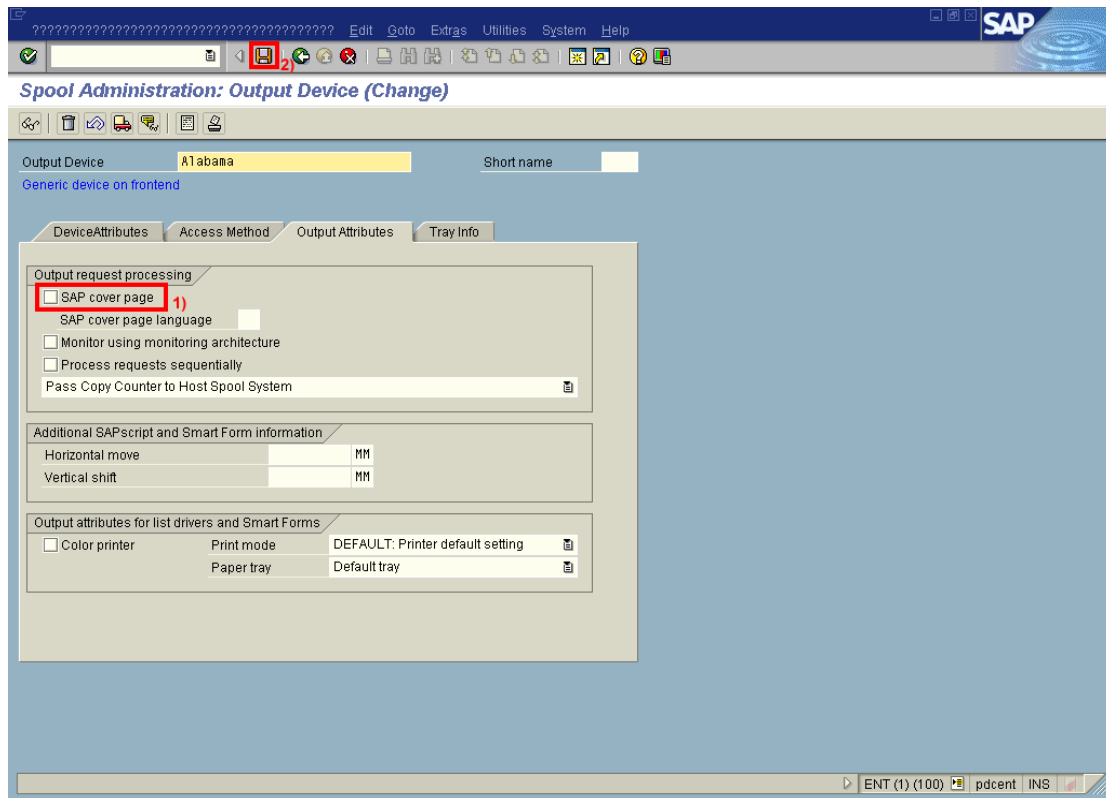


© SAP is a trademark of SAP AG.



© SAP is a trademark of SAP AG.

1. Enter the **Host printer** name **\_DEFAULT**.
2. Click on “**Output Attributes**” to visit the next part of output device configuration.



© SAP is a trademark of SAP AG.

1. (Optional), Administrator can enable printer for printing **cover page** by checking this check box.
2. Press "**SAVE**" and the Output device will be created.



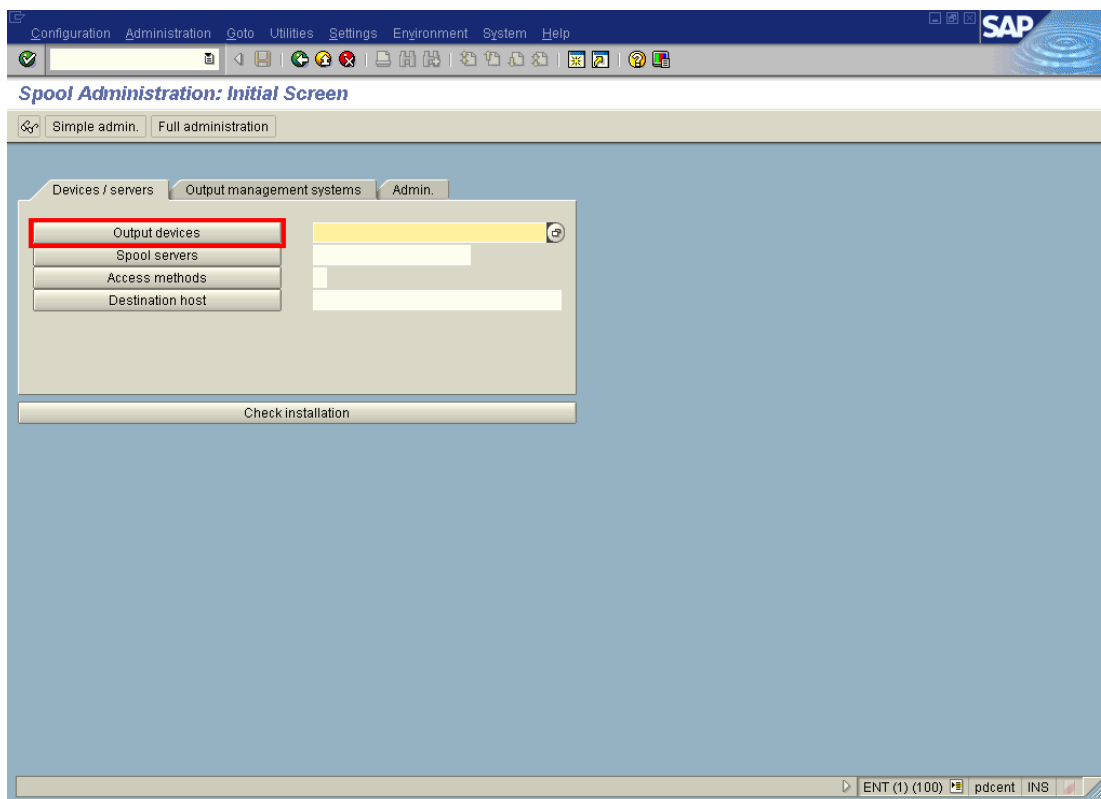


5

## Verification of Output Device

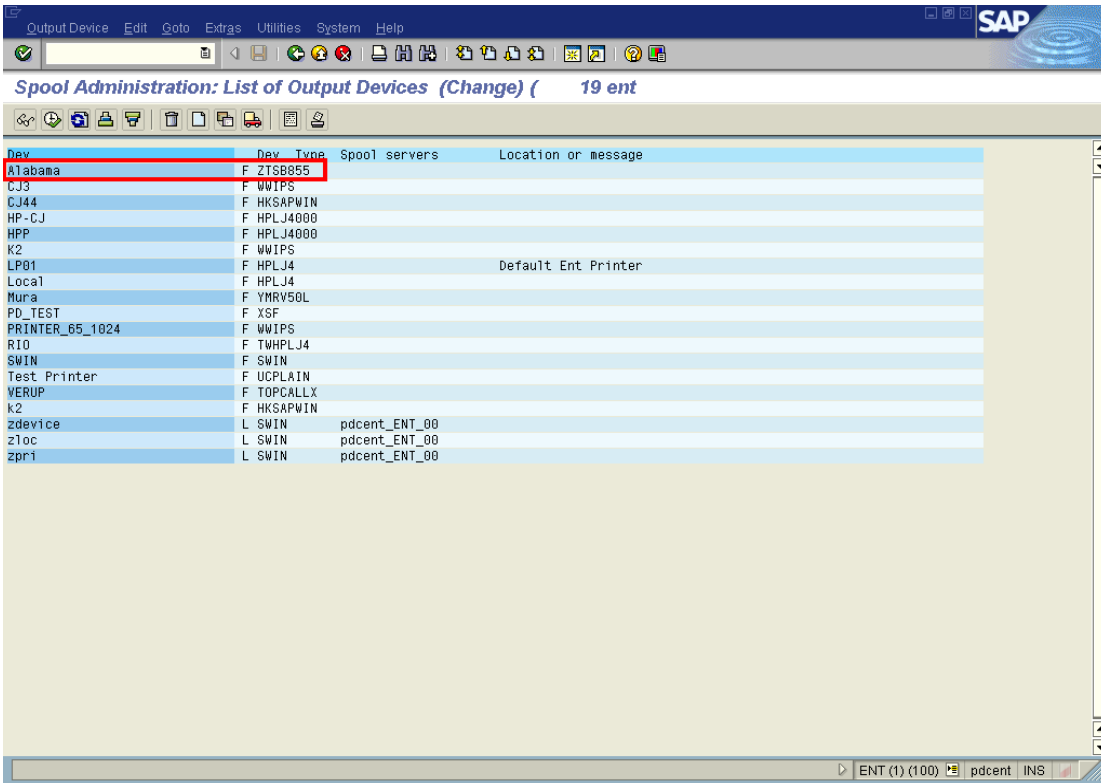
Once the output device is created, it needs to be verified whether the newly created output device appears in the standard list of all output device in SAP R/3 or not. To verify this same, follow the steps given below.

In the initial screen of SAP, type the transaction code “**SPAD**” in the command window and press “**Enter**”, the following screen is displayed.



© SAP is a trademark of SAP AG.

Click on “**Output devices**” to get list of all output device configured on the SAP/R3 system. Newly created output device **Alabama** should appear in this list.



Dev	Dev Type	Spool servers	Location or message
Alabama	F ZTSB855		
CJ3	F WWIPS		
CJ44	F HKSAPWIN		
HP-CJ	F HPLJ4000		
HPP	F HPLJ4000		
K2	F WWIPS		
LP01	F HPLJ4		Default Ent Printer
Local	F HPLJ4		
Mura	F YMRV50L		
PD_TEST	F XSF		
PRINTER_65_1024	F WWIPS		
R10	F TWHPLJ4		
SWIN	F SWIN		
Test Printer	F UCPLAIN		
VERUP	F TOPCALLX		
k2	F HKSAPWIN		
zdevice	L SWIN	pdcent_ENT_00	
zloc	L SWIN	pdcent_ENT_00	
zpr1	L SWIN	pdcent_ENT_00	

© SAP is a trademark of SAP AG.

Newly created output device **Alabama** should appear in the list. If newly created output device (NEW) is not displayed in the list, repeat the process of creating output device.

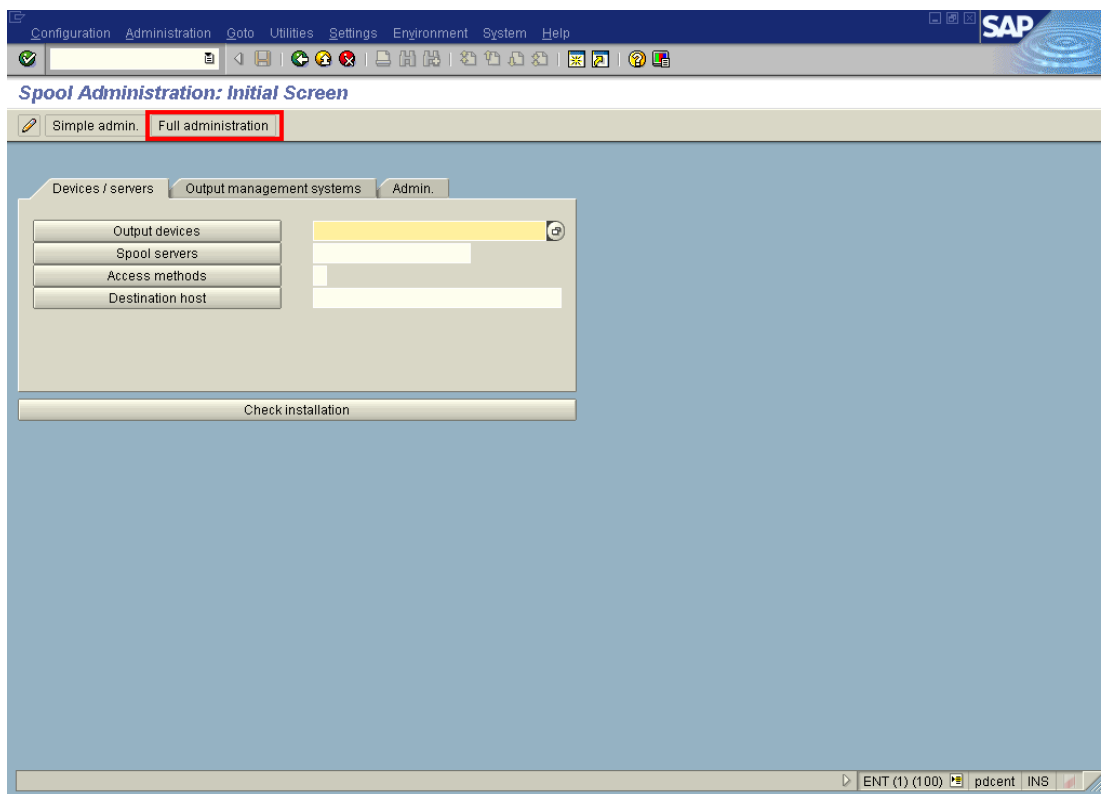


6

## Editing the Device Type File

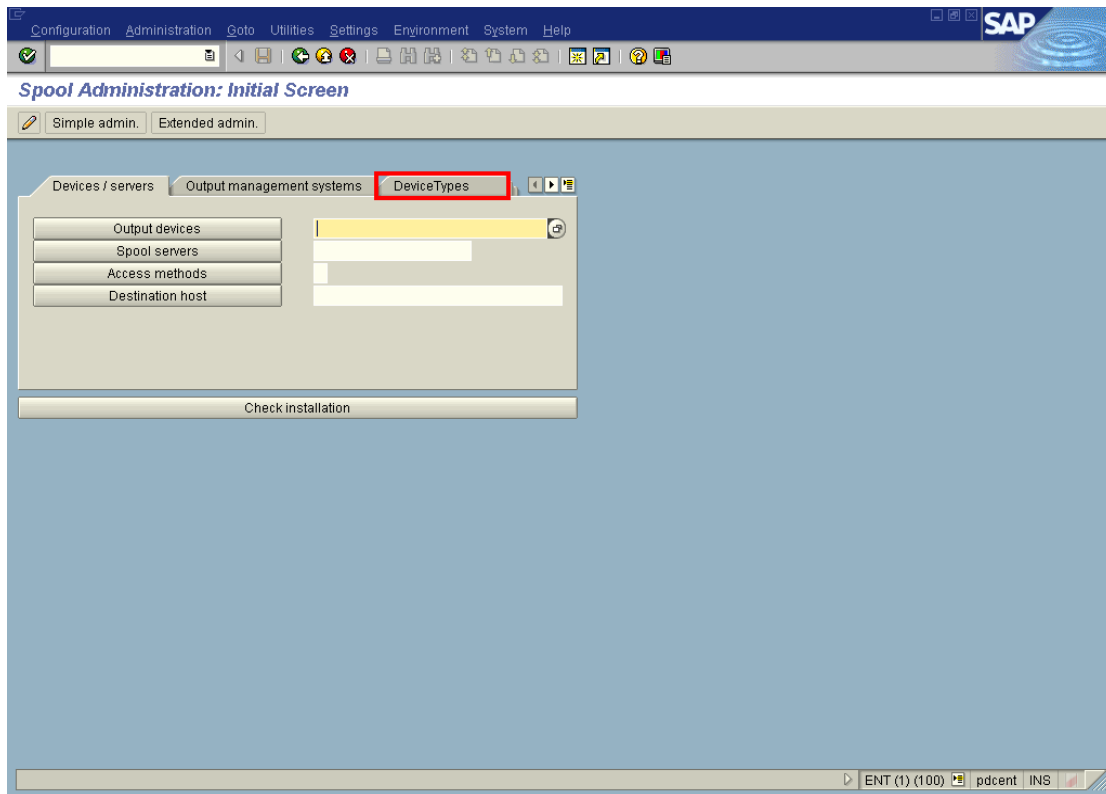
Once the device type is imported and verified whether the newly imported device type appears in the standard list of all device types in SAP R/3 or not, device type file can be edited as per the requirement. To edit the device type file, follow the steps given below.

In the initial screen of SAP, type the transaction code “**SPAD**” in the command window and press “**Enter**”, the following screen is displayed.



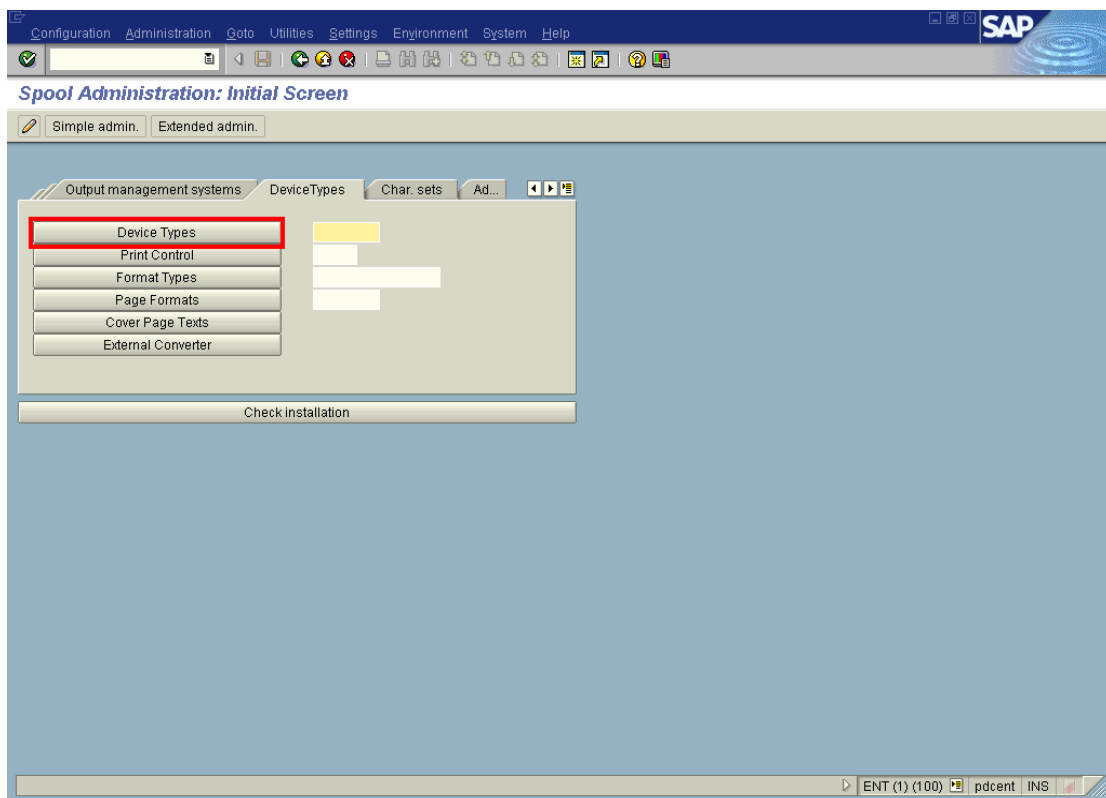
© SAP is a trademark of SAP AG.

Click on “**Full Administration**” and the following screen will be displayed.



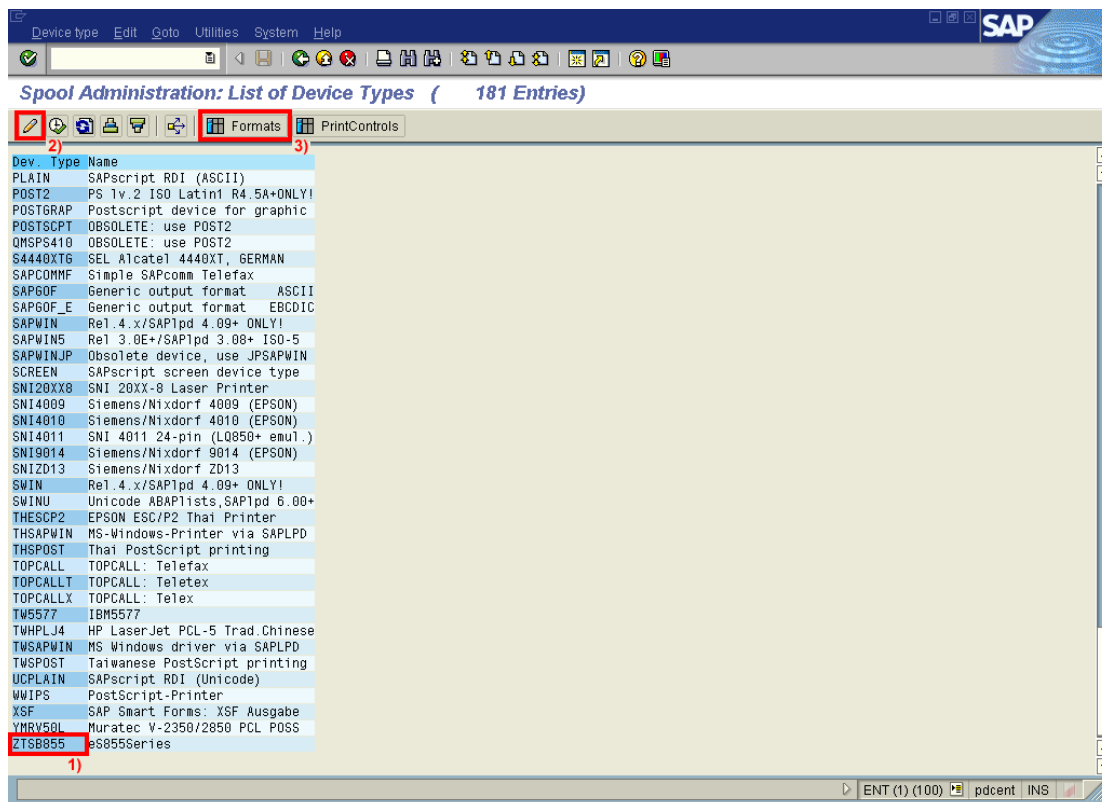
© SAP is a trademark of SAP AG.

Click on the **Device Types** tab.



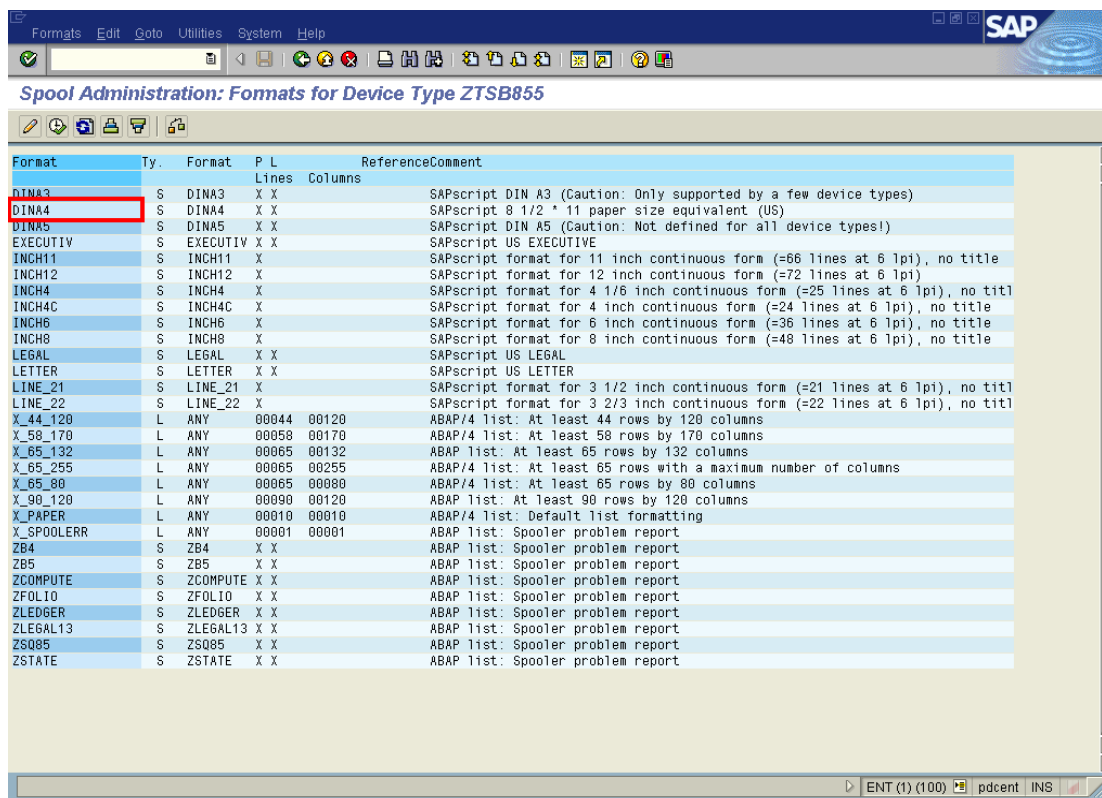
© SAP is a trademark of SAP AG.

On clicking on the **“Device Types”** button, list of device types will be displayed as in the following screen.



© SAP is a trademark of SAP AG.

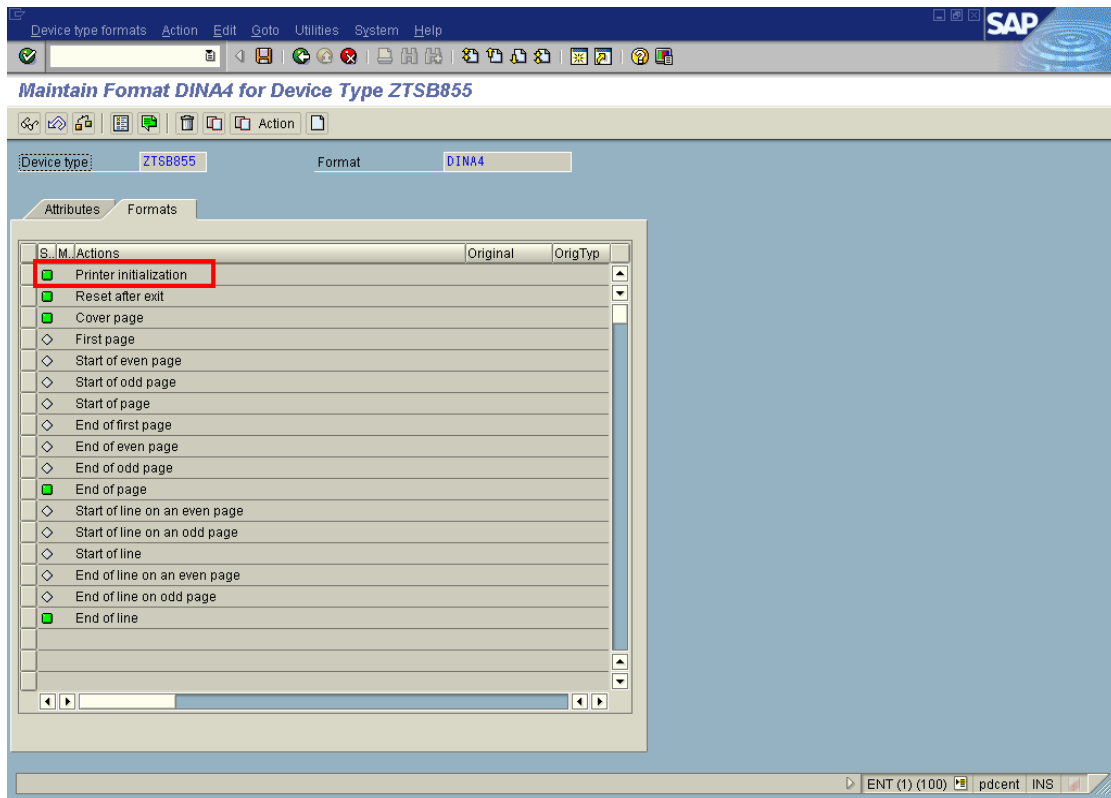
1. Select the device type file to be edited ( **ZTSB855** in the above mentioned example ).
2. Press “F8” to edit the selected device type file.
3. Click “Formats” to view different types of formats of the selected device type file as shown in the following screen.



© SAP is a trademark of SAP AG.

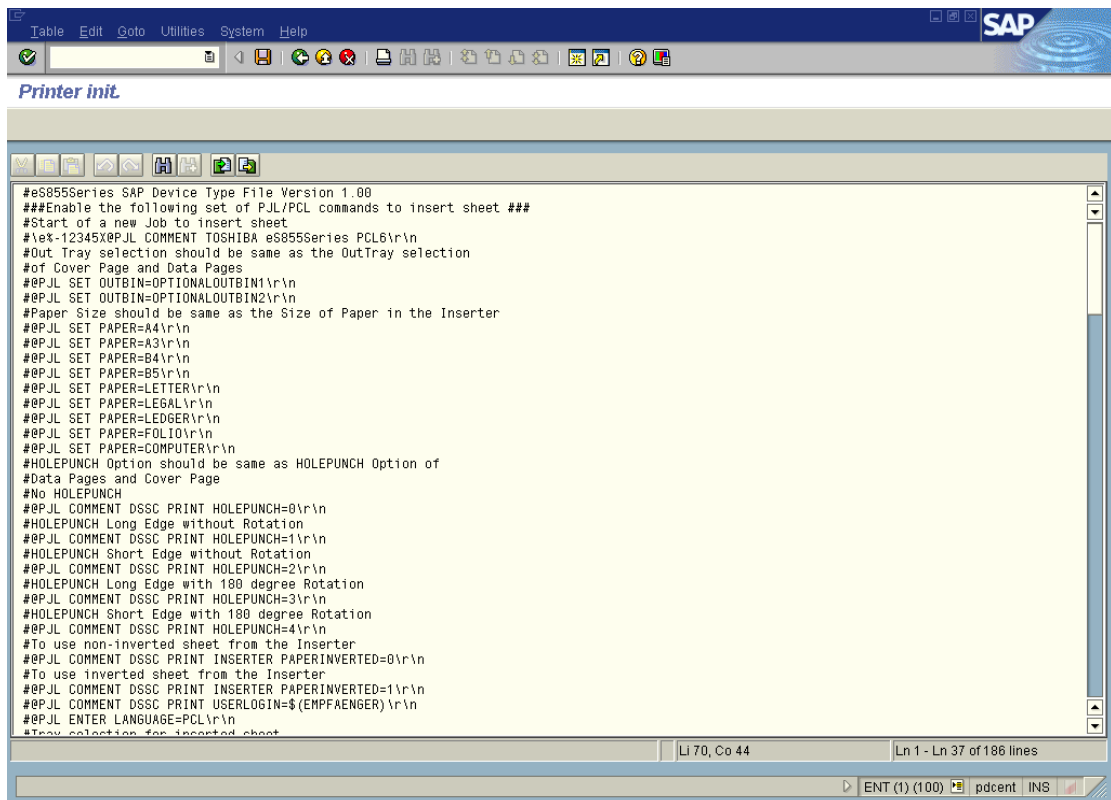
Select the format to be edited by double clicking that format (**DINA4** in the above mentioned example). The following screen will be displayed.





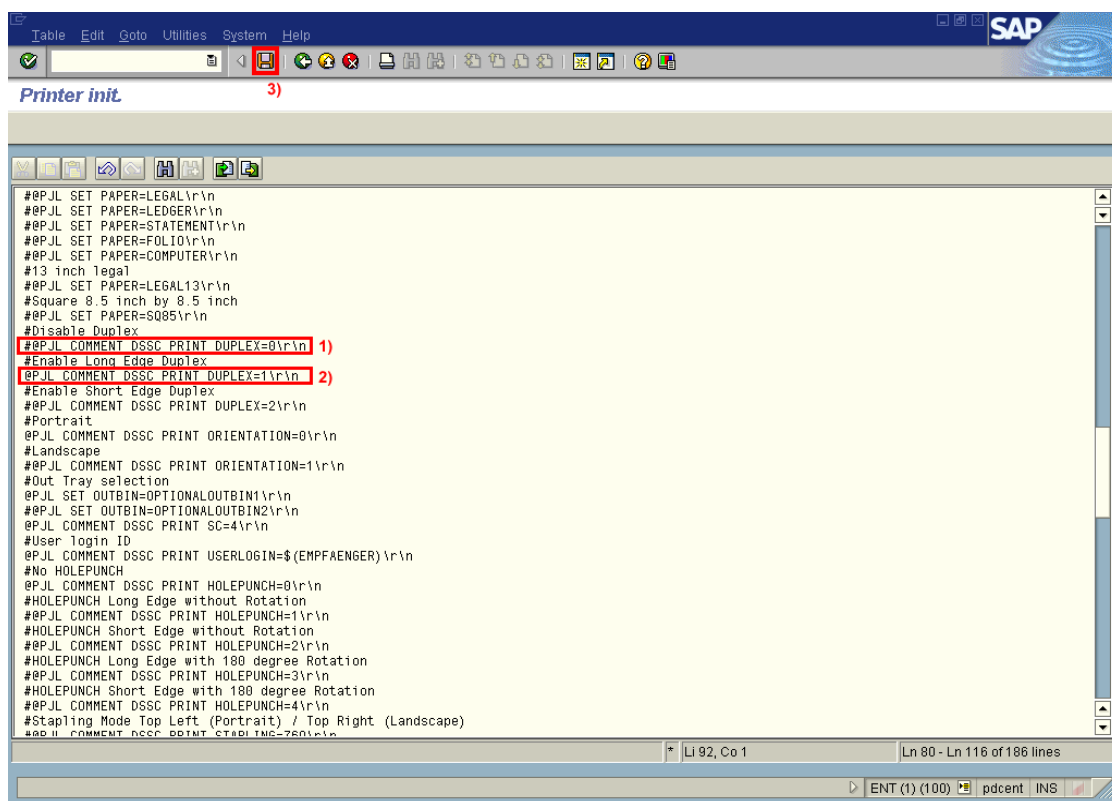
© SAP is a trademark of SAP AG.

Select the section where the PJI is to be edited from the different sections available for the format (**Printer Initialization** section in the above mentioned example) by double clicking that section. The following screen will be displayed.



© SAP is a trademark of SAP AG.

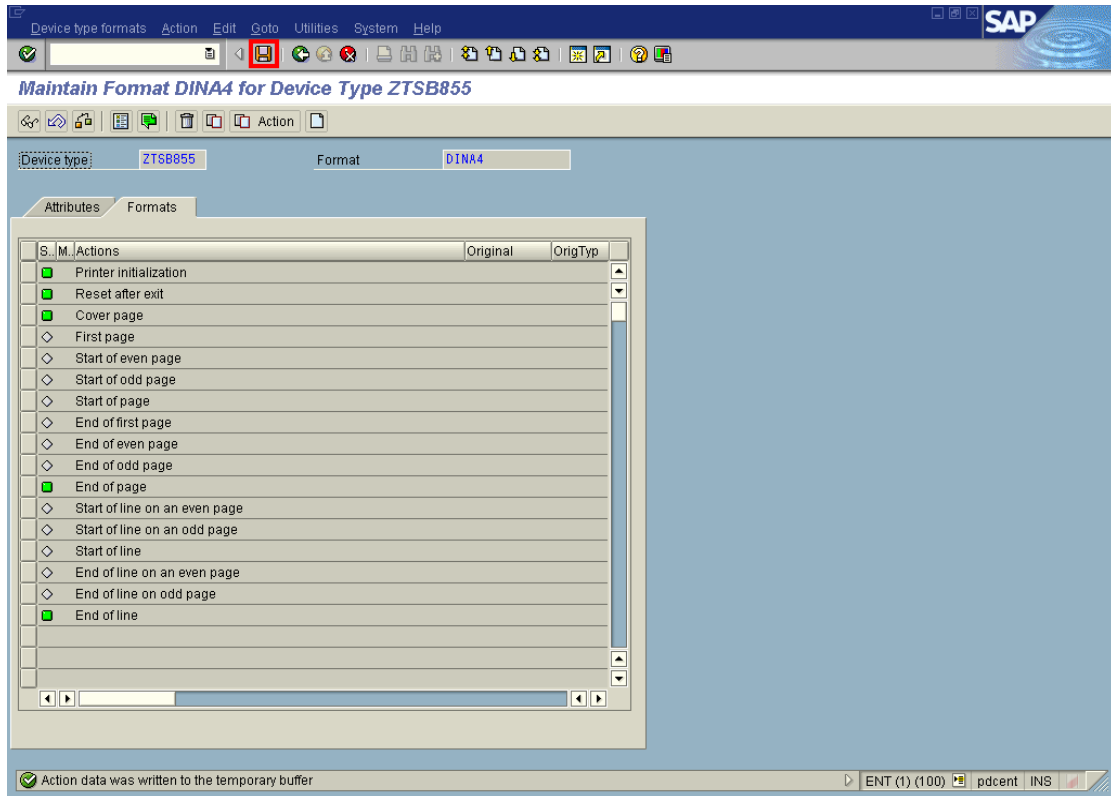
Edit the data as per the user requirement as shown in the following screen.



© SAP is a trademark of SAP AG.

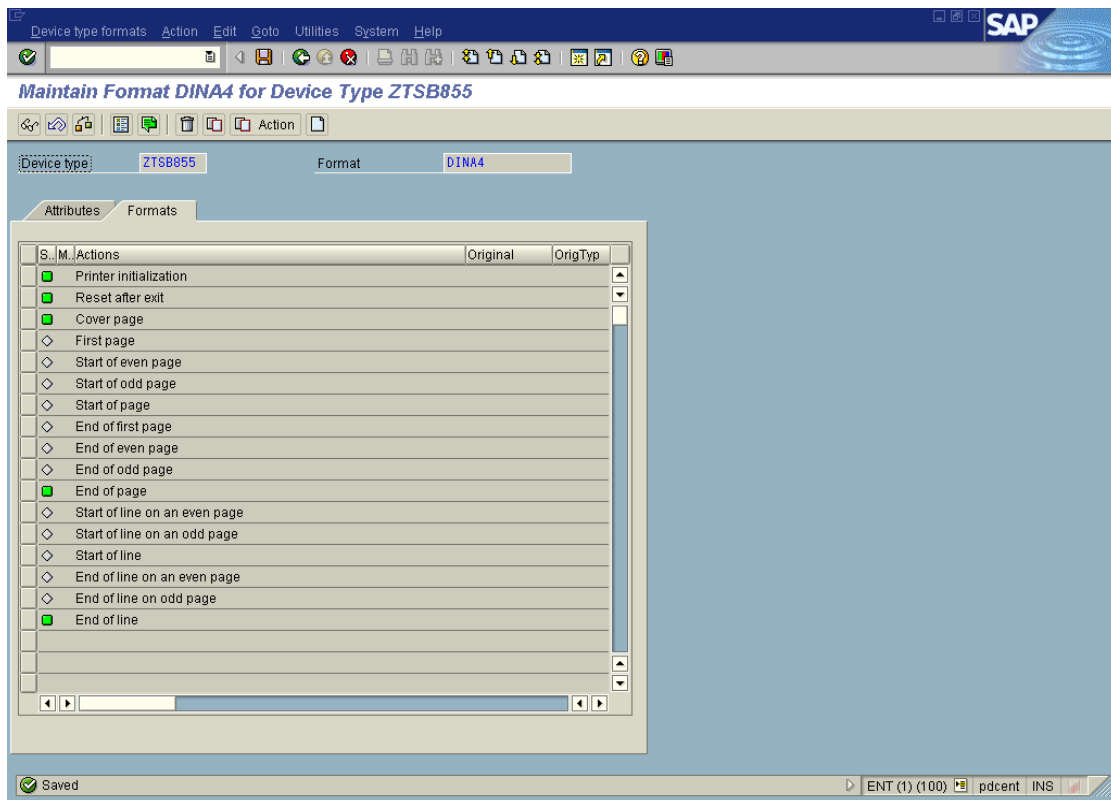
Suppose if the user wants to select the PRINT DUPLEX mode value as Long Edge (DUPLEX=1) instead of the default value simplex (DUPLEX=0), then

1. Insert the comment (#) for the pjl PRINT DUPLEX=0.
2. Remove the comment (#) from the pjl PRINT DUPLEX=1.
3. Press **"SAVE"**. The following screen will be displayed.



© SAP is a trademark of SAP AG.

When you press “**SAVE**” again, the following screen will be displayed.



© SAP is a trademark of SAP AG.

The edited data will be saved in the selected format (DINA4).



7

## Toshiba e-STUDIO855Series Specific Features and Configuration

### ■ Input Tray Selection

No PjL control is available, so it should be implemented using PCL escape command sequence.

Auto Select	<esc>&l17H
Upper Tray	<esc>&l01H
Lower Tray	<esc>&l4H
Tandem Tray	<esc>&l5H
1 <sup>st</sup> Pedestal	<esc>&l5H
2 <sup>nd</sup> Pedestal	<esc>&l21H
External Tray	<esc>&l20H
Bypass Feed	<esc>&l2H
Insert Tray	<esc>&l30H

### ■ Output Tray Selection

Following PjL would be used to achieve various OUTPUT Tray Selection.

- Output Tray 1  
@PjL SET OUTBIN=OPTIONALOUTBIN1
- Output Tray 2  
@PjL SET OUTBIN=OPTIONALOUTBIN2
- Inner tray  
@PjL SET OUTBIN=UPPER
- Job Separator Upper  
@PjL SET OUTBIN=OPTIONALOUTBIN4
- Job Separator Lower  
@PjL SET OUTBIN=OPTIONALOUTBIN5

### ■ Paper Selection

This control is accomplished using following PjL.

#@PjL SET PAPER=<PageCode>

Paper Size	PageCode
A3	A3
A4	A4
A5	A5
B4	B4
B5	B5
LETTER	LETTER
LEGAL	LEGAL
LEDGER	LEDGER
STATEMENT	STATEMENT
FOLIO	FOLIO
COMPUTER	COMPUTER
8.5 inch Square	SQ85
13 inch Legal	LEGAL13

### ■ Duplex Selection

Following PjL would be used to achieve various duplex selections.

- No Duplex  
@PjL COMMENT DSSC PRINT DUPLEX=0
- Long Edge Duplex  
@PjL COMMENT DSSC PRINT DUPLEX=1
- Short Edge Duplex  
@PjL COMMENT DSSC PRINT DUPLEX=2

## ■ Orientation Selection

Following PJL would be used to achieve orientation selections.

- Portrait  
@PJL COMMENT DSSC PRINT ORIENTATION=0
- Landscape  
@PJL COMMENT DSSC PRINT ORIENTATION=1

## ■ Hole Punch

Following PJL would be used to achieve control over Hole-punching.

- No Hole Punch  
@PJL COMMENT DSSC PRINT HOLEPUNCH=0
- Hole Punch Long Edge without Rotation  
@PJL COMMENT DSSC PRINT HOLEPUNCH=1
- Hole Punch Short Edge without Rotation  
@PJL COMMENT DSSC PRINT HOLEPUNCH=2
- Hole Punch Long Edge with 180 degree Rotation  
@PJL COMMENT DSSC PRINT HOLEPUNCH=3
- Hole Punch Short Edge with 180 degree Rotation  
@PJL COMMENT DSSC PRINT HOLEPUNCH=4

## ■ Stapling Function

Following PJL would be used to achieve control over Stapling.

- Stapling Mode Top Left (Portrait) / Top Right (Landscape)  
@PJL COMMENT DSSC PRINT STAPLING=769
- Stapling Mode Left (Portrait) / Top (Landscape)  
@PJL COMMENT DSSC PRINT STAPLING=2
- Stapling Mode Bottom Left (Portrait) / Top Left (Landscape)  
@PJL COMMENT DSSC PRINT STAPLING=33027
- Stapling Mode Top Right (Portrait) / Bottom Right (Landscape)  
@PJL COMMENT DSSC PRINT STAPLING=387
- Stapling Mode Right (Portrait) / Bottom (Landscape)  
@PJL COMMENT DSSC PRINT STAPLING=130
- Stapling Mode Bottom Right (Portrait) / Bottom Left (Landscape)  
@PJL COMMENT DSSC PRINT STAPLING=33665
- Stapling Mode Top (Portrait) / Bottom (Landscape)  
@PJL COMMENT DSSC PRINT STAPLING=512
- Stapling Mode Bottom (Portrait) / Top (Landscape)  
@PJL COMMENT DSSC PRINT STAPLING=33280

## ■ Private Print

Following two PJLs would be used to achieve Private Print.

- @PJL COMMENT DSSC PRINT PRINTMODE=PRIVATE
- @PJL COMMENT DSSC PRINT PRIVPRINT=nnnnn  
Where *nnnnn* is five-digit code for private printing.

## ■ Proof Print

Following PJL would be used to achieve Proof Print.

@PJL COMMENT DSSC PRINT PRINTMODE=PROOF

## ■ Hold Print

Following PJL would be used to achieve Hold Print.

@PJL COMMENT DSSC PRINT PRINTMODE=HOLD

## ■ Booklet and Saddle Stitch

Booklet printing can be achieved using  
 @PJL COMMENT DSSC PRINT BOOKLET=LT

Saddle stitch can be achieved using  
 @PJL COMMENT DSSC PRINT STAPLING=1028

Booklet function is dependent on Short Edge Duplex printing, Saddle stitch, Left to Right Printing, and the type of paper to be used. Hole punching also needs to be disabled. Therefore, for Booklet printing, the following combination of commands needs to be enabled.

```
#@PJL COMMENT DSSC PRINT HOLEPUNCH=0
#@PJL COMMENT DSSC PRINT DUPLEX=2
#@PJL COMMENT DSSC PRINT STAPLING=1028
#@PJL COMMENT DSSC PRINT LEFTTORIGHT=1
#@PJL COMMENT DSSC PRINT BOOKLET=LT
#@PJL SET PAPER=<PageCode>
```

Paper Size	PageCode
A3	A3
A4	A4
A5	A5
B4	B4
B5	B5
LETTER	LT
LEGAL	LG
LEDGER	LD
STATEMENT	ST
FOLIO	FO
SQ85	SQ
13 inch Legal	13

## ■ Department Code

Following PJL would be used to have department code based access to the printer.

- If Department code is NULL  
 @PJL COMMENT DSSC PRINT ACCESSCODE=
- If Department Code is 5 digit number ( nnnnn )  
 @PJL COMMENT DSSC PRINT ACCESSCODE=nnnnn

## ■ BOX Mode

Following combination of PJL would be used to have BOX mode printing.  
 For Public Box use 000, for private use three digit no.

```
@PJL COMMENT DSSC PRINT PRINTMODE=BOX\r\n
@PJL COMMENT DSSC BOX BOXNO=nnn\r\n
@PJL COMMENT DSSC BOX BOXNAME=\r\n
@PJL COMMENT DSSC BOX BOX=1\r\n
```

If Private Box is used, then set 5digit BOX PASSWORD

```
@PJL COMMENT DSSC BOX BOXPASSWORD=12345\r\n
```

## ■ Inserter Option

Following PJL is used to invert or non invert the inserter page.

- @PJL COMMENT DSSC INSERTER PAPERINVERTED=0\r\n
- @PJL COMMENT DSSC INSERTER PAPERINVERTED=1\r\n





**MULTIFUNCTIONAL DIGITAL SYSTEMS**  
**SAP R/3 Printing Device Type File Installation Guide**

** e-STUDIO555/655/755/855**

**TOSHIBA TEC CORPORATION**

2-17-2, HIGASHIGOTANDA, SHINAGAWA-KU, TOKYO, 141-8664, JAPAN

