

MULTIFUNCTIONAL DIGITAL SYSTEMS

Hardcopy Security Printing Guide

©2008, 2009 TOSHIBA TEC CORPORATION All rights reserved

Under the copyright laws, this manual cannot be reproduced in any form without prior written permission of TTEC. No patent liability is assumed, however, with respect to the use of the information contained herein.



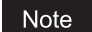
Preface

Thank you for purchasing TOSHIBA Multifunctional Digital System. This guide describes how to use the Hardcopy Security Printing. Read this manual before using this function. Keep this manual within easy reach, and use it to configure an environment that makes best use of the e-STUDIO's functions.



■ How to read this manual

□ Symbols in this manual

In this manual, some important items are described with the symbols shown below. Be sure to read these items before using this equipment.

-  **WARNING** Indicates a potentially hazardous situation which, if not avoided, could result in death, serious injury, or serious damage, or fire in the equipment or surrounding objects.
-  **CAUTION** Indicates a potentially hazardous situation which, if not avoided, may result in minor or moderate injury, partial damage to the equipment or surrounding objects, or loss of data.
-  **Note** Indicates information to which you should pay attention when operating the equipment.

Other than the above, this manual also describes information that may be useful for the operation of this equipment with the following signage:

-  **Tip** Describes handy information that is useful to know when operating the equipment.
-  Pages describing items related to what you are currently doing. See these pages as required.

□ Model and series names in this manual

In this manual, each model name is replaced with the series name as shown below.

Model name	Series name
e-STUDIO5520C/6520C/6530C	e-STUDIO6530C Series
e-STUDIO2020C/2330C/2820C/2830C/3520C/3530C/4520C	e-STUDIO4520C Series
e-STUDIO555/655/755/855	e-STUDIO855 Series
e-STUDIO523/603/723/853	e-STUDIO853 Series
e-STUDIO520/600/720/850	e-STUDIO850 Series
e-STUDIO205L/255/305/355/455	e-STUDIO455 Series
e-STUDIO353/453	e-STUDIO453 Series
e-STUDIO352/452	e-STUDIO452 Series
e-STUDIO203L/233/283	e-STUDIO283 Series
e-STUDIO202L/232/282	e-STUDIO282 Series

□ Screens

- Screens in this manual may differ from the actual ones depending on how the equipment is used, such as the status of the installed options.
- The illustration screens used in this manual are for paper in the A/B format. If you use paper in the LT format, the display or the order of buttons in the illustrations may differ from that of your equipment.

□ Trademarks

- The official name of Windows 2000 is Microsoft Windows 2000 Operating System.
- The official name of Windows XP is Microsoft Windows XP Operating System.
- The official name of Windows Vista is Microsoft Windows Vista Operating System.
- The official name of Windows 7 is Microsoft Windows 7 Operating System.
- The official name of Windows Server 2003 is Microsoft Windows Server 2003 Operating System.
- The official name of Windows Server 2008 is Microsoft Windows Server 2008 Operating System.
- Microsoft, Windows, Windows NT, and the brand names and product names of other Microsoft products are trademarks of Microsoft Corporation in the US and other countries.
- Apple, AppleTalk, Macintosh, Mac, Mac OS, Safari, and TrueType are trademarks of Apple Inc. in the US and other countries.
- Adobe, Adobe Acrobat, Adobe Reader, Adobe Acrobat Reader, and PostScript are trademarks of Adobe Systems Incorporated.
- Mozilla, Firefox and the Firefox logo are trademarks or registered trademarks of Mozilla Foundation in the U.S. and other countries.
- IBM, AT and AIX are trademarks of International Business Machines Corporation.
- NOVELL, NetWare, and NDS are trademarks of Novell, Inc.
- TopAccess is a trademark of Toshiba Tec Corporation.
- Other company names and product names in this manual are the trademarks of their respective companies.

CONTENTS

Preface.....	1
Chapter 1 OVERVIEW	
Hardcopy Security Printing	6
System Requirements and Limitations	7
Chapter 2 CONFIGURING HARDCOPY SECURITY PRINTING	
Setting Up the Hardware Device	10
Setting Up the Printer Driver	11
[Effect] Tab	11
Chapter 3 TROUBLESHOOTING	
Troubleshooting	16
Security patterns not printed as expected	16
Error Code	17
INDEX	19

OVERVIEW

This chapter gives an overview of the Hardcopy Security Printing.

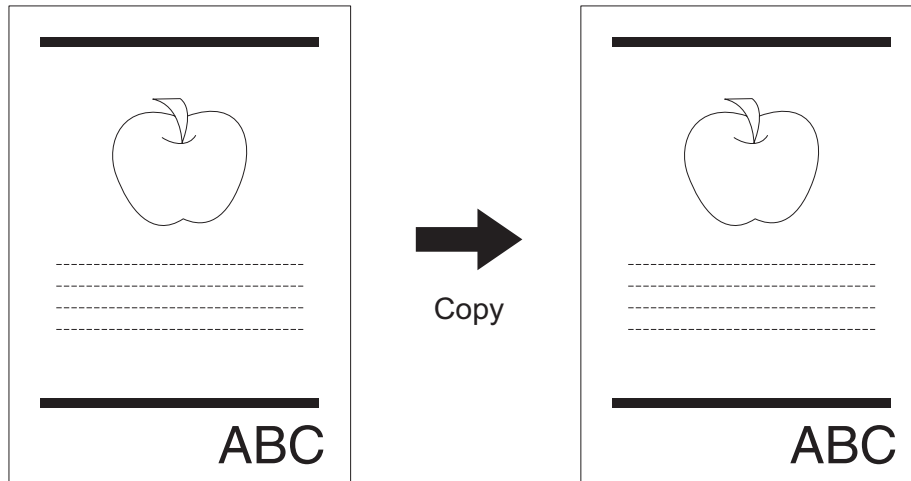
Hardcopy Security Printing	6
System Requirements and Limitations	7

Hardcopy Security Printing

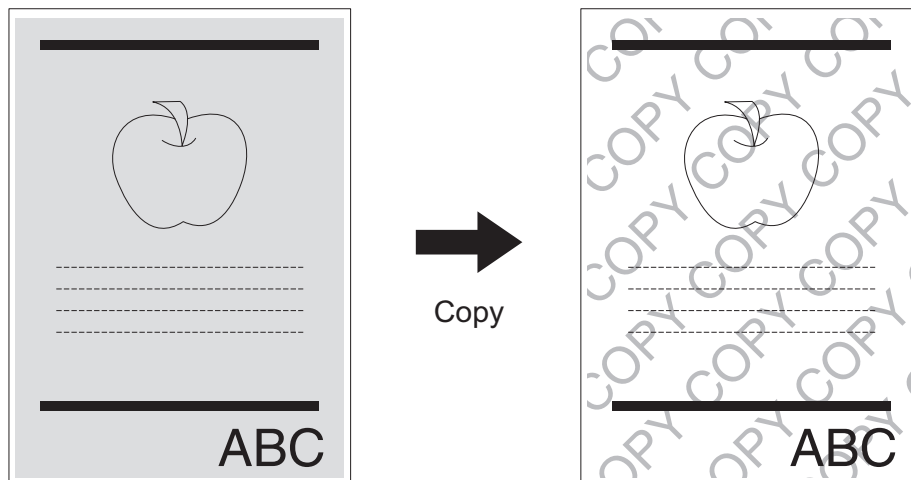
The Hardcopy Security Printing is a feature to embed a security pattern on the background of a document. The security pattern consists of a background pattern and a string (embedded text in the background pattern). The string embedded in the security pattern emerges when the security pattern-embedded original is copied. This feature will deter the duplication of the confidential documents.

Besides some preset security patterns, you can customize your security patterns or edit the strings to be embedded. The printer driver configurations such as N in one, rotate 180 degrees, mirror or reduction do not affect the security pattern and it is printed as configured on the printer driver.

Without Security Pattern



With Security Pattern



System Requirements and Limitations

System Requirements

- The Hardcopy Security Printing is available on the following models:
e-STUDIO282 Series, e-STUDIO283 Series, e-STUDIO455 Series
e-STUDIO452 Series, e-STUDIO453 Series
e-STUDIO850 Series, e-STUDIO853 Series, e-STUDIO855 Series
e-STUDIO4520C Series
e-STUDIO6530C Series
- To enable the Hardcopy Security Printing on the following models, the Printer Kit or the Printer/Scanner Kit (both optional) is required:
e-STUDIO282 Series, e-STUDIO283 Series, e-STUDIO455 Series
e-STUDIO452 Series, e-STUDIO453 Series
e-STUDIO850 Series, e-STUDIO853 Series, e-STUDIO855 Series
- The Hardcopy Security Printing is available on the computers with the following Windows operating system installed:
Windows 2000, Windows XP, Windows Vista, Windows 7, Windows Server 2003 and Windows Server 2008.
- Printer Driver:
PS3 printer driver only.

Limitations

- The Hardcopy Security Printing cannot be combined with the special effects below:
 - Overlay in the [Effect] tab of the PS3 printer driver.
 - Negative/Positive in the [Effect] tab of the PS3 printer driver.
 - Do not print blank page in the [Others] tab of the PS3 printer driver.
- The effect of the Hardcopy Security Printing may not be output when it is used with the following functions at the same time:
 - all the functions on the [Setting] of the [Image Quality] tab
 - Toner Save on the [Others] tab
- The configuration of the Hardcopy Security Printing in the Windows server does not affect the printer drivers settings on the client computers when they download the printer drivers from the shared printer created by Windows server.
- The Hardcopy Security Printing is maximally effective when the security pattern-embedded document is duplicated with the same model that embedded the security pattern on the original.
- Do not use the Hardcopy Security Printing with fax, scan, or e-Filing function. Under these combinations, the documents could be duplicated.
- The full performance of the Hardcopy Security Printing may not be exhibited as expected depending on the models or their usage environments. In using the Hardcopy Security Printing, we are not responsible for its full effectiveness.

CONFIGURING HARDCOPY SECURITY PRINTING

This chapter describes the configurations of the Hardcopy Security Printing.

Setting Up the Hardware Device	10
Setting Up the Printer Driver	11
[Effect] Tab.....	11

Setting Up the Hardware Device

To enable the Hardcopy Security Printing, the configuration of the hardware device by your service representative is required.

Note

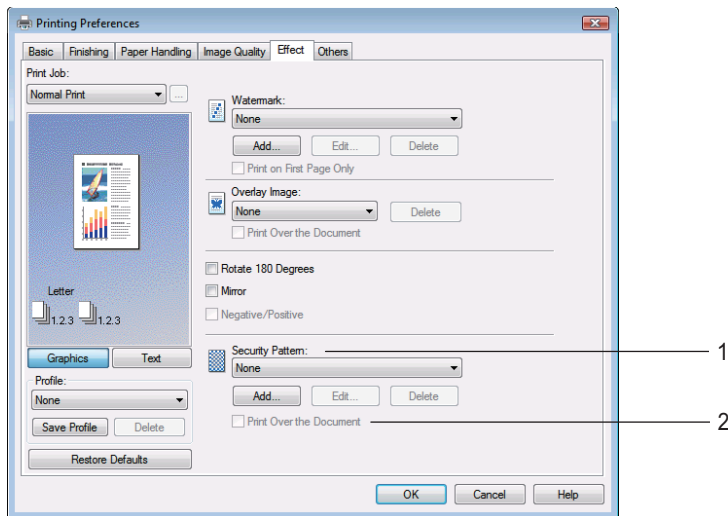
Before using the Hardcopy Security Printing, right-click on the PS3 printer driver icon to open its Properties window. On the [Configuration] tab of the Properties window, select the Enable SNMP communication check box, select [Manual], and then click [Update Now].

Setting Up the Printer Driver

■ [Effect] Tab

Set up the Hardcopy Security Printing on the [Effect] tab of the PS3 printer driver.

[Effect] tab (PS3)



1) Security Pattern

Select the security pattern to use or edit. The printer driver has the two preset security patterns “CopyCopy” and “Name&Time”. Also you can create and store a new security pattern.

- **None**: No security pattern is printed.

The preset patterns below are shown in the drop-down list box.

- CopyCopy
- Name&Time

[Add]

Click this to create a new security pattern. The security pattern dialog box appears by clicking it.

📖 P.12 “Adding or Editing the security pattern”

[Edit]

Click this to edit the security pattern you have selected in the drop-down list box. The security pattern dialog box appears by clicking it

📖 P.12 “Adding or Editing the security pattern”

[Delete]

Click this to delete the security pattern you have selected in the drop-down list box.

Notes

- The preset security patterns can be deleted but cannot be restore once they are deleted.
- “None” cannot be deleted.

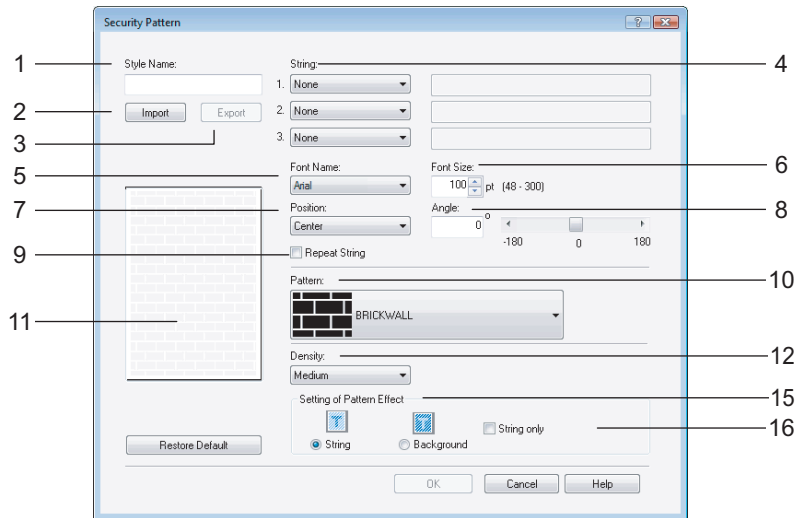
2) Print Over the Document

Click this to overprint the security pattern on the data of the document file. This option is effective for the documents with many images.

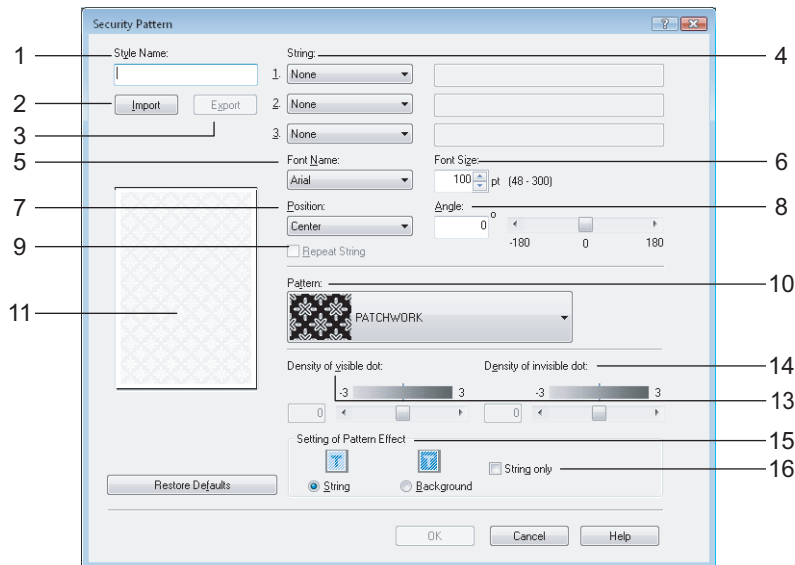
□ Adding or Editing the security pattern

The security pattern dialog box is displayed by clicking the [Add] or [Edit] button. You can create a new security pattern or edit the existing security patterns.

For the e-STUDIO4520C Series and the e-STUDIO6530C Series



For the e-STUDIO455 Series and the e-STUDIO855 Series



1) Style Name

Enter the name of the pattern in this box. The style name entered here will be displayed in the security pattern drop-down list box. You can enter up to 63 characters.

2) [Import]

Click this to import a security pattern setting file (extension ".hsp") that was created with other PS3 printer driver for TOSHIBA Multifunctional Digital Systems.

If the font specified by the security pattern setting file is unavailable on the computer that imported the setting file, Arial is applied instead.

Tip

A security pattern setting file can only be exported from, and imported to, the same series.

Example:

- a security pattern setting file exported from the e-STUDIO4520C series can be imported to e-STUDIO2020C/2330C/2820C/2830C/3520C/3530C/4520C.

3) [Export]

Click this to export a security pattern setting as a data file. Other PS3 printer drivers for TOSHIBA Multifunctional Digital Systems can import the data file and apply the imported setting.

4) String

Select the type of the string in this menu. The string will emerge when the security pattern-embedded document is duplicated with a copier. You can include up to three items in a security pattern. The items below are displayed in the drop-down list box.

- **None:** No string is printed.
- **Text:** Any text is applied as the string printed in the security pattern. You can enter up to 20 characters.
- **Date & Time:** The date and time that the printing is performed is applied as the string.
- **IP Address:** The IP address of the computer that prints the document is applied as the string.
- **Domain Name:** The domain name of the computer that prints the document is applied as the string.
- **User Name:** The user name of the computer that performs printing the document is applied as the string.

5) Font Name

Select the font for the string. Only TrueType fonts are available.

6) Font Size

Select the font size for the string. You can set the size between 48 to 300 (pt.) by one point.

7) Position

Set the position of the string.

8) Angle

This option is available when the position is set "Center". You can set the rotation angle of the string between -180 degrees to 180 degrees by one degree. You can also set the rotation angle by sliding the scroll bar.

9) Repeat String

This option is available when the position is set "Center". Select this to print the strings repeatedly over the document. Do not select it if you select "Text" without entering any string.

10) Pattern

Select a background pattern. It camouflages the hidden string embedded. You find the following background patterns in the Pattern drop-down list box.

For the e-STUDIO4520C Series and the e-STUDIO6530C Series

- **BRICKWALL**
- CIRCLE
- HONEYCOMB
- IN AND OUT
- STRIPE
- BUBBLE
- DOUBLERING
- FLOWER
- GRASS
- STAR

For the e-STUDIO455 Series and the e-STUDIO855 Series

- **PATCHWORK**
- BOX
- DIAMOND
- CHECK
- ZIGZAG
- STAR
- HONEYCOMB
- FLOWER
- BUBBLE
- CIRCLE

11) Preview Window

In the preview window, you can see how the document will be output with the current security pattern settings. The string in the preview window is shown in the font size for A4 or LT.

12) Density

You can select the density level of the printed security pattern among [Light], [Medium] and [Dark].

Tip

This setting is available only for the e-STUDIO4520C Series, e-STUDIO282 Series, e-STUDIO452 Series, e-STUDIO850 Series and the e-STUDIO6530C Series.

13) Density of visible dots

You can select the density of dots that remain on the printed security patterns among 7 levels. If [String] is selected for [Setting of Pattern Effect] (see 15 below), "visible dots" are the ones in strings while those in the background disappear. If [Background] is selected, "visible dots" are the ones in the background while those in the strings disappear.

Tip

This setting is available only for the e-STUDIO455 Series and the e-STUDIO855 Series.

14) Density of invisible dots

You can select the density of dots that disappear on the printed security patterns among 7 levels. If [String] is selected for [Setting of Pattern Effect] (see 15 below), "invisible dots" are the ones in the background while those in the strings remain. If [Background] is selected, "invisible dots" are the ones in the strings while those in the background remain.

Tip

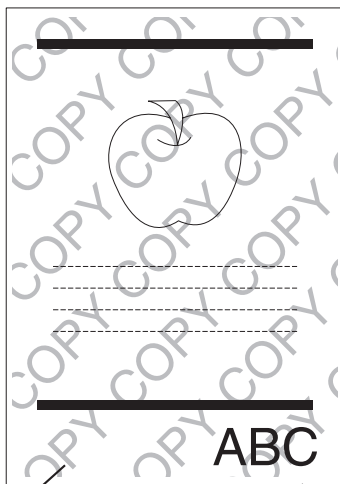
This setting is available only for the e-STUDIO455 Series and the e-STUDIO855 Series.

15) Setting of Pattern Effect

You can select how the security pattern emerges.

- **String:** The background pattern disappears and the string emerges when the security pattern-embedded document is copied.
- **Background:** The string disappears and the background pattern remains visible when the security pattern-embedded document is copied.

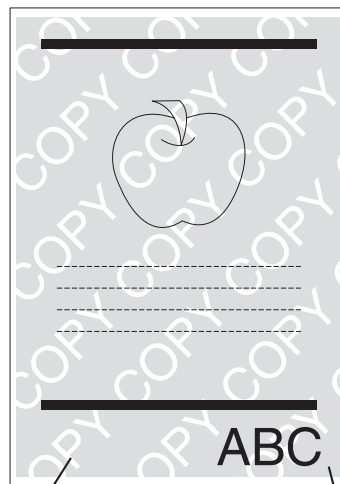
Setting of Pattern Effect : String



The string emerges

The background pattern disappears

Setting of Pattern Effect : Background



The string disappears

The background pattern remains

16) String Only

This option is available when "String" is selected on "Setting of Pattern Effect". Select this to print only the string without the background pattern, which is like a "Watermark" printing. The effect of the Hardcopy Security Printing cannot be achieved if this option is applied.

TROUBLESHOOTING

This chapter describes the troubleshooting for the Hardcopy Security Printing.

Troubleshooting	16
Security patterns not printed as expected	16
Error Code	17

Troubleshooting

■ Security patterns not printed as expected

Problem Description

The security pattern is not printed.

The security pattern behind or around the text is not printed.

In these cases, see the following items to troubleshoot the problem.

Corrective Action

- Depending on the application software you are making a document with, the security pattern may not be printed on the document. In this case, retry the printing after selecting the Print Over the Document check box in the [Effect] tab.
- Clear the Use PostScript Passthrough check box in the PostScript Settings dialog box before printing a document using the application software below:
 - CorelDraw
 - QuarkXPress
 - Adobe PageMaker

Error Code

If an error occurs in using the Hardcopy Security Printing, the error code appears in the print log. See the table below to troubleshoot the problem.

Error Code	Problem Description	Corrective Action
4037	Hardcopy Security Printing error	Printing the print data (including its security pattern) is not allowed. Contact your service representative.

INDEX

A

Adding or Editing the security pattern	12
Angle	13

D

Density	14
Density of invisible dots	14
Density of visible dots	14

E

[Effect] Tab	11
Error Code	17
[Export]	13

F

Font Name	13
Font Size	13

H

Hardcopy Security Printing	6
----------------------------------	---

I

[Import]	12
----------------	----

P

Pattern	13
Position	13
Preview Window	14
Print Over the Document	11

R

Repeat String	13
---------------------	----

S

Security Pattern	11
Setting of Pattern Effect	14
String	13
String Only	14
Style Name	12

T

Tab	11
Troubleshooting	
Security patterns not printed as expected	16

MULTIFUNCTIONAL DIGITAL SYSTEMS
Hardcopy Security Printing Guide

TOSHIBA TEC CORPORATION

2-17-2, HIGASHIGOTANDA, SHINAGAWA-KU, TOKYO, 141-8664, JAPAN

