

**TOSHIBA**

MULTIFUNCTIONAL DIGITAL SYSTEMS

# **SAP R/3 Printing Device Type File Installation Guide**

---

 **e-STUDIO350/450**

 **e-STUDIO352/452**

# Table of Contents

---

<b>1. Introduction .....</b>	<b>1</b>
1.1 SAP Printing Environment .....	1
<b>2. Installation .....</b>	<b>2</b>
<b>3. Verification of Device Type File.....</b>	<b>10</b>
<b>4. Creation of Output Device .....</b>	<b>14</b>
<b>5. Verification of Output Device .....</b>	<b>20</b>
<b>6. Specific Features and Configuration.....</b>	<b>22</b>
6.1 Input Tray Selection .....	22
6.2 Output Tray Selection .....	22
6.3 Paper Selection .....	22
6.4 Duplex Selection .....	23
6.5 Orientation Selection .....	23
6.6 Hole Punch .....	23
6.7 Stapling Function .....	24
6.8 Private Print .....	24
6.9 Proof Print.....	24
6.10 Booklet and Saddle Stitch.....	25
6.11 Department Code.....	25
6.12 BOX Mode .....	26

## <Trademarks>

SAP, R/3, mySAP, mySAP.com, xApps, xApp, SAP NetWeaver, and other SAP products and services mentioned herein as well as their respective logos are trademarks or registered trademarks of SAP AG in Germany and in several other countries all over the world. All other product and service names mentioned are the trademarks of their respective companies.

## <Warning>

You may not, nor cause or permit any third party to, modify, adapt, merge, translate, reverse compile, reverse assemble, or reverse engineer the Software. You may not use the Software, except in accordance with this license. No title to the intellectual property in the Software is transferred to you and full ownership is retained by TTEC or its suppliers. Source code of the Software is not licensed to you. You will be held legally responsible for any copyright infringement, unauthorized transfer, reproduction or use of the Software or its documentation.

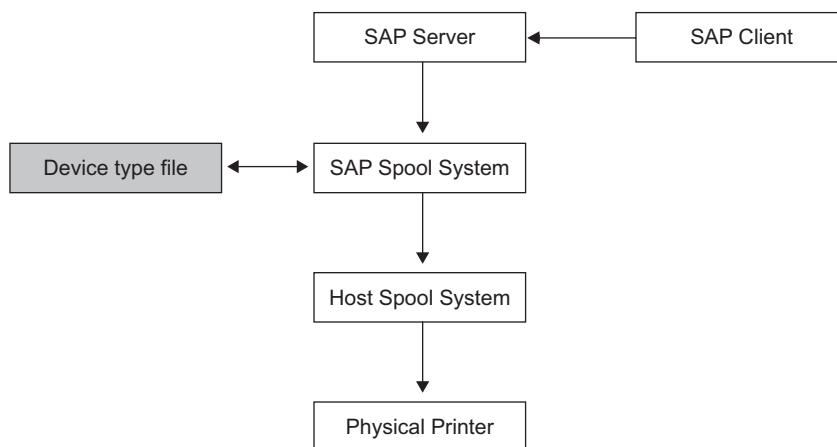


---

# 1. Introduction

This document describes the step-wise procedure to install and configure the device type for e-STUDIO 450/452 Series printers in SAP R/3. SAP administrator can implement the printer specific features by inserting the necessary PJI/PCL commands given in the Device configuration section.

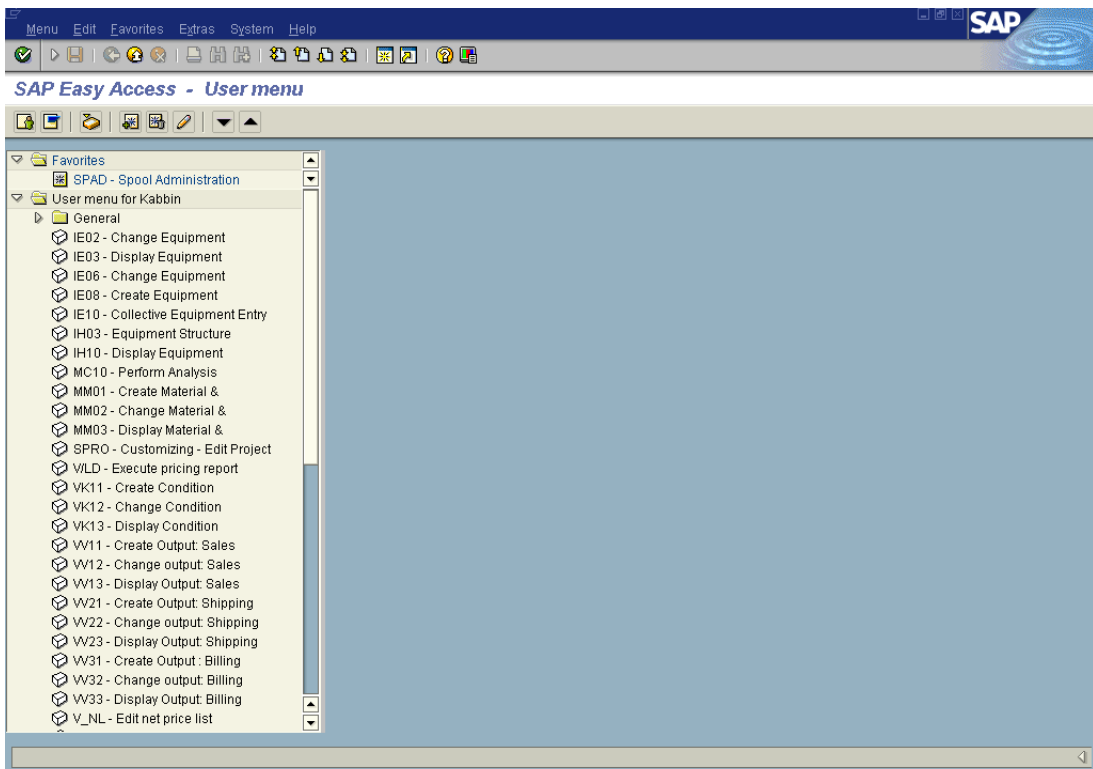
## 1.1 SAP Printing Environment



1. SAP Client raises the print Request.
2. SAP Server will pass on the request to SAP spool system based on type of printer selected by the Client program.
3. SAP spool system will consult Device type file (.PRI File) corresponding to the output device. Based on configuration and control information present in Device type file, it will generate Printing data and Control Information.
4. Based on the "Access method" configured for the output device, SAP Printing Subsystem will operate in the respective way.

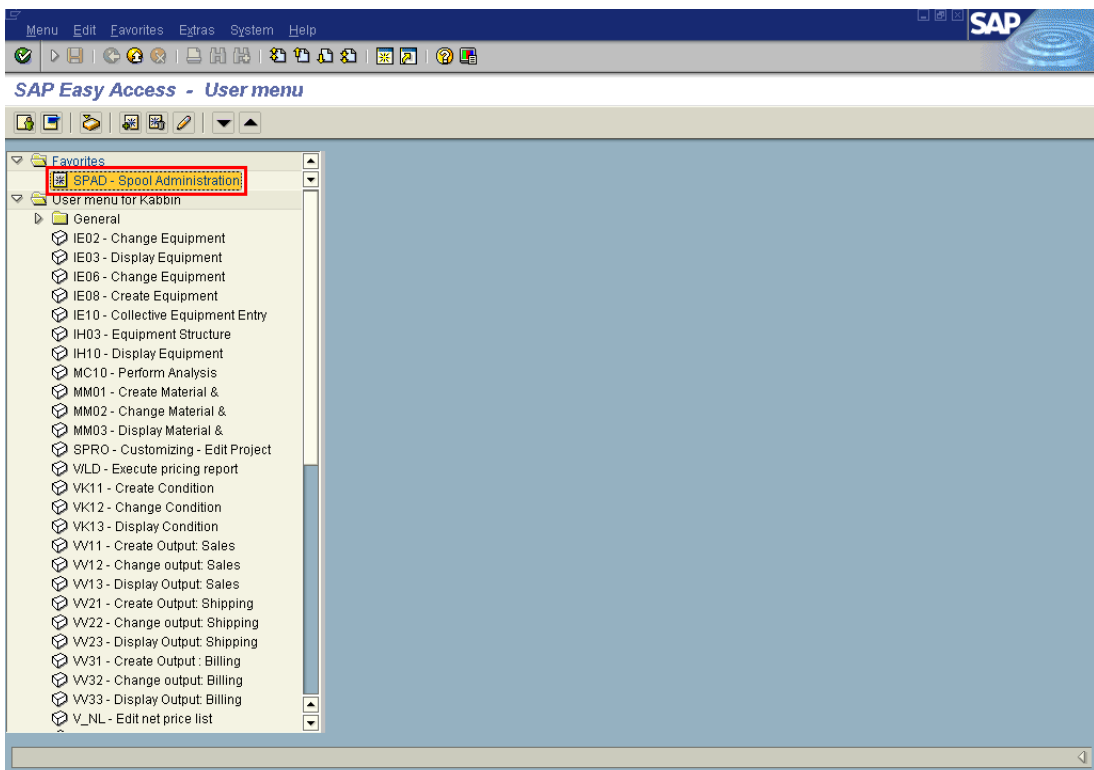
## 2. Installation

To install a new device type into SAP, follow the procedure described below.  
After you have logged on to SAP, the following screen is displayed.



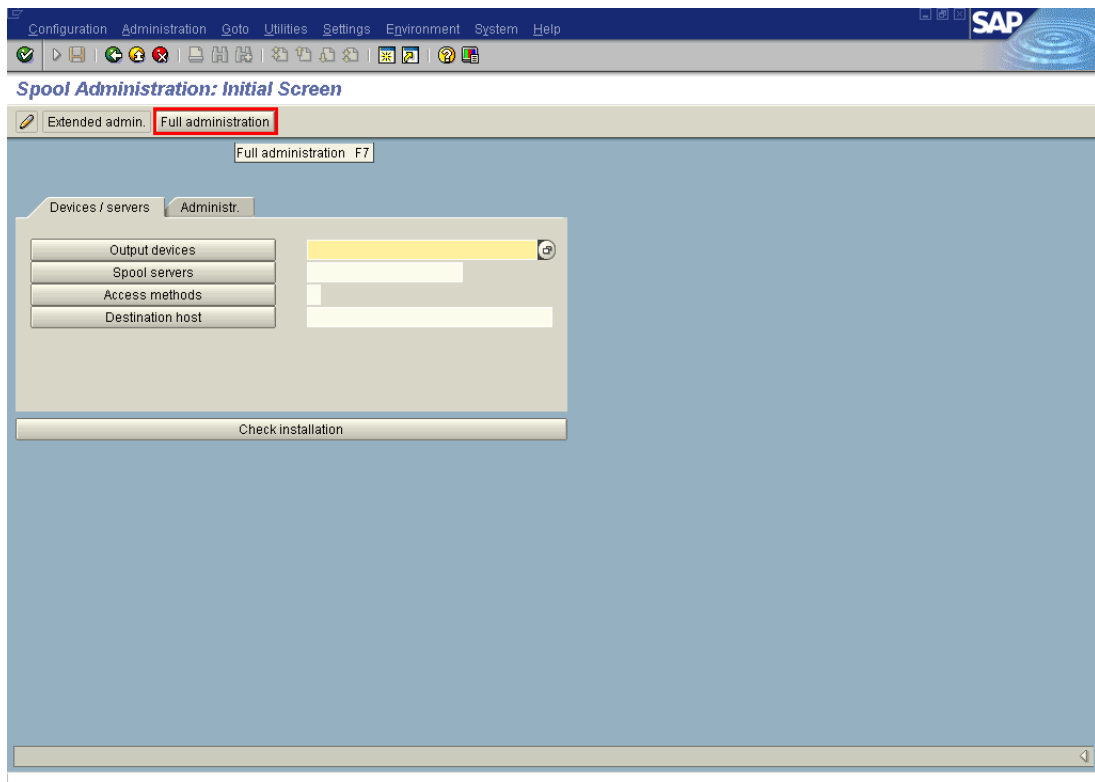
© Copyright 2006 SAP AG, All rights reserved.

Click on the “**Spool Administration**” tab.



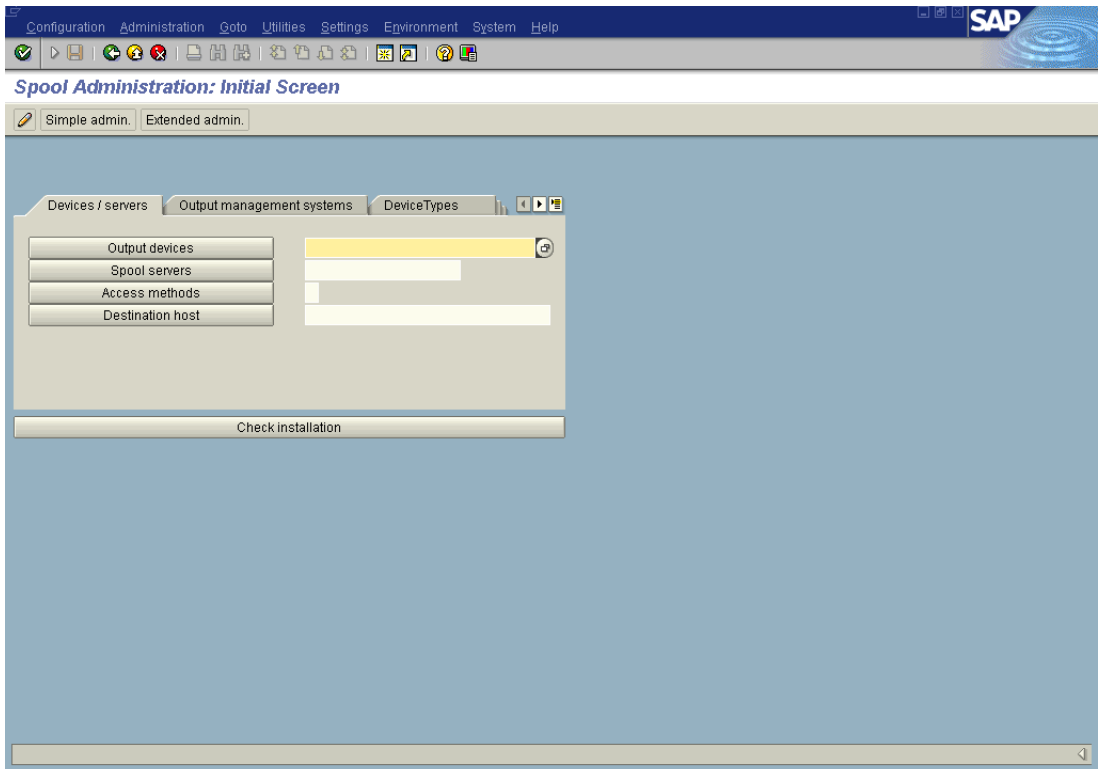
© Copyright 2006 SAP AG, All rights reserved.

Once you Press enter the following screen is displayed.



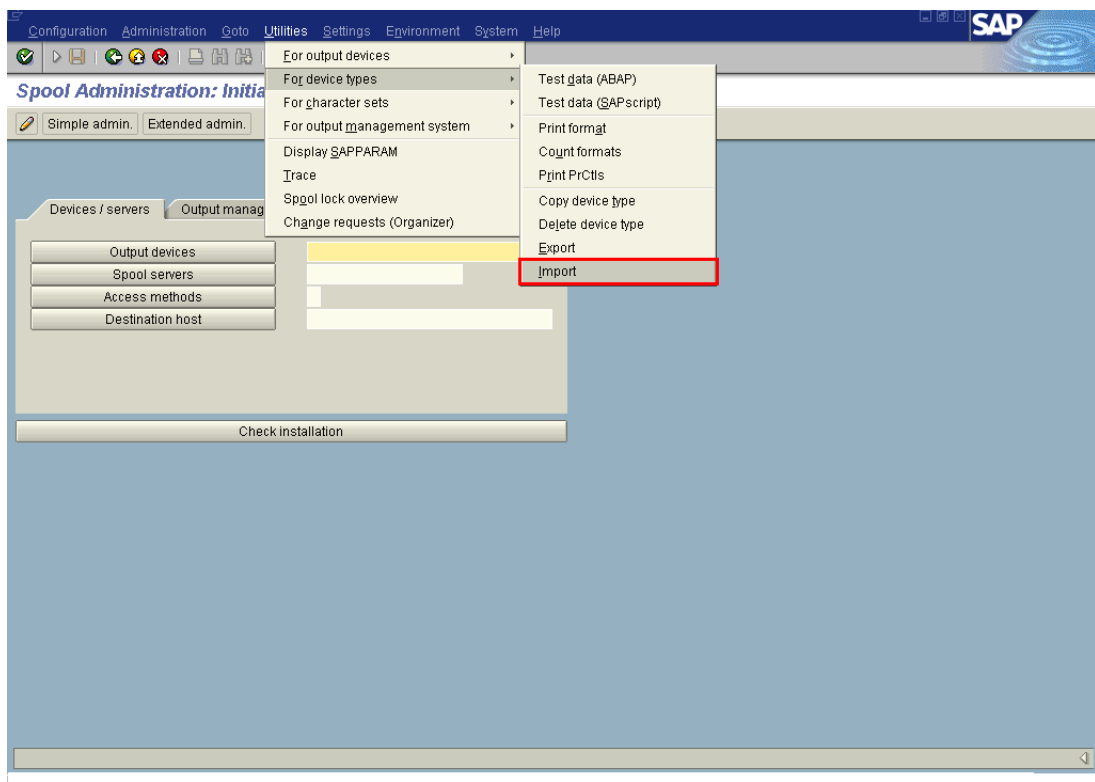
© Copyright 2006 SAP AG, All rights reserved.

Press on the push-button **“Full administration”**. The following screen is displayed.



© Copyright 2006 SAP AG, All rights reserved.

In the menu bar, go to **“Utilities”** → **“For device types”** → **“Import”** as displayed in the following screen.



© Copyright 2006 SAP AG, All rights reserved.

Once you press “**Import**”, the following screen is displayed.

Select the radio button “**Device Type**” and enter the name of the device type (.PRI) file without file extension in the input field box “**Object name**”. (E.g. if the device type file name is ZTSB452.pri only ZTSB452) as shown in the screen below. Make sure the entry in the field **Mode (EXPORT/IMPORT)** is written as “**IMPORT**”.

Program Edit Goto System Help

SAP

SAPscript Export to Dataset / SAPscript Import from Dataset

Object selection and session ctrl

☐ Form

☐ Style

☐ Standard text

Text ID ST

Language EN

☒ Device Type

Object name ZTSB452

Mode (EXPORT/IMPORT) IMPORT

Ctrl parameters for file operation

☒ From/on frontend

☐ From/on application server

Dataset name C:\temp\\*\*\*\*\*&&&

☐ Binary file format

☐ Display dataset contents

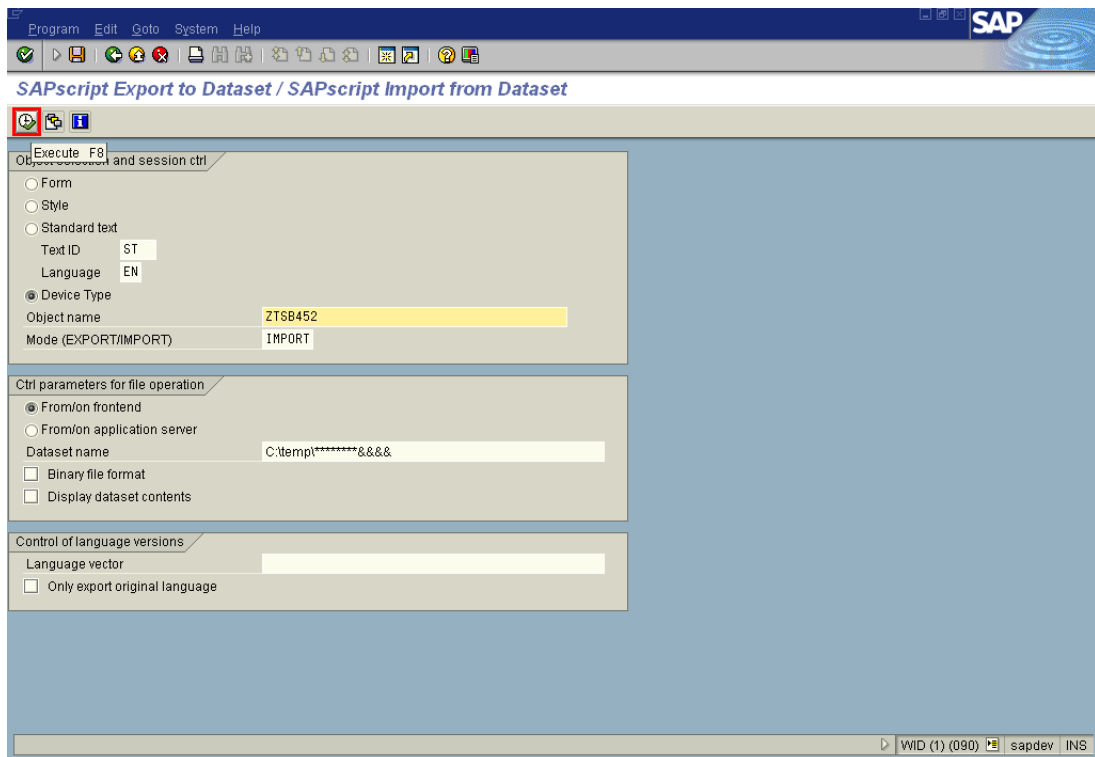
Control of language versions

Language vector

☐ Only export original language

WID (1) (090) sapdev INS

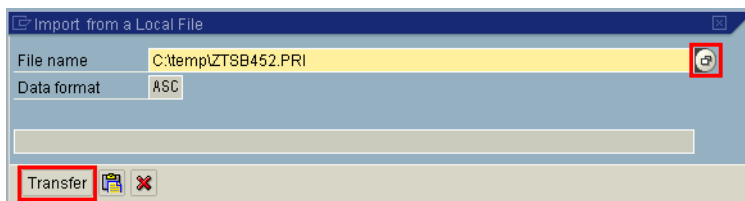
© Copyright 2006 SAP AG, All rights reserved.



© Copyright 2006 SAP AG, All rights reserved.

Press “F8” to proceed with import.

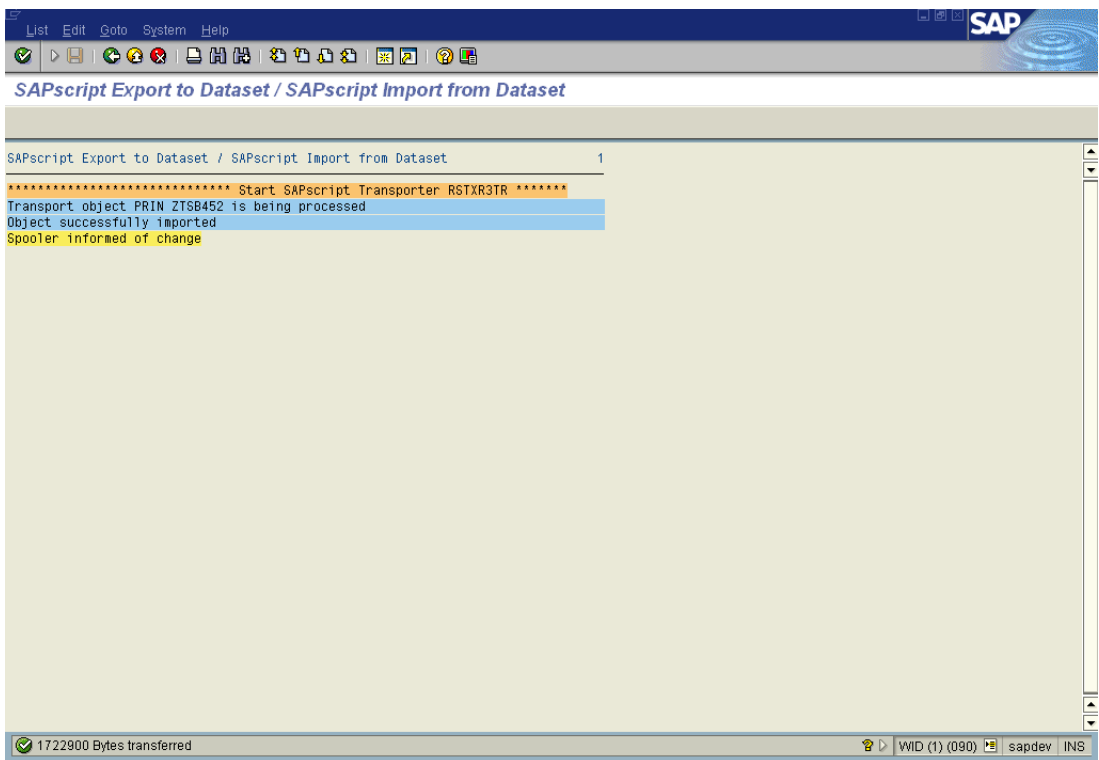
To locate the ZTSB452.PRI on local system, **Press** this button.



© Copyright 2006 SAP AG, All rights reserved.

After locating PRI file, the screen displayed would be as above.  
Import process will start as soon as **Transfer** is pressed.

On successful completion of import, the following message would be displayed.

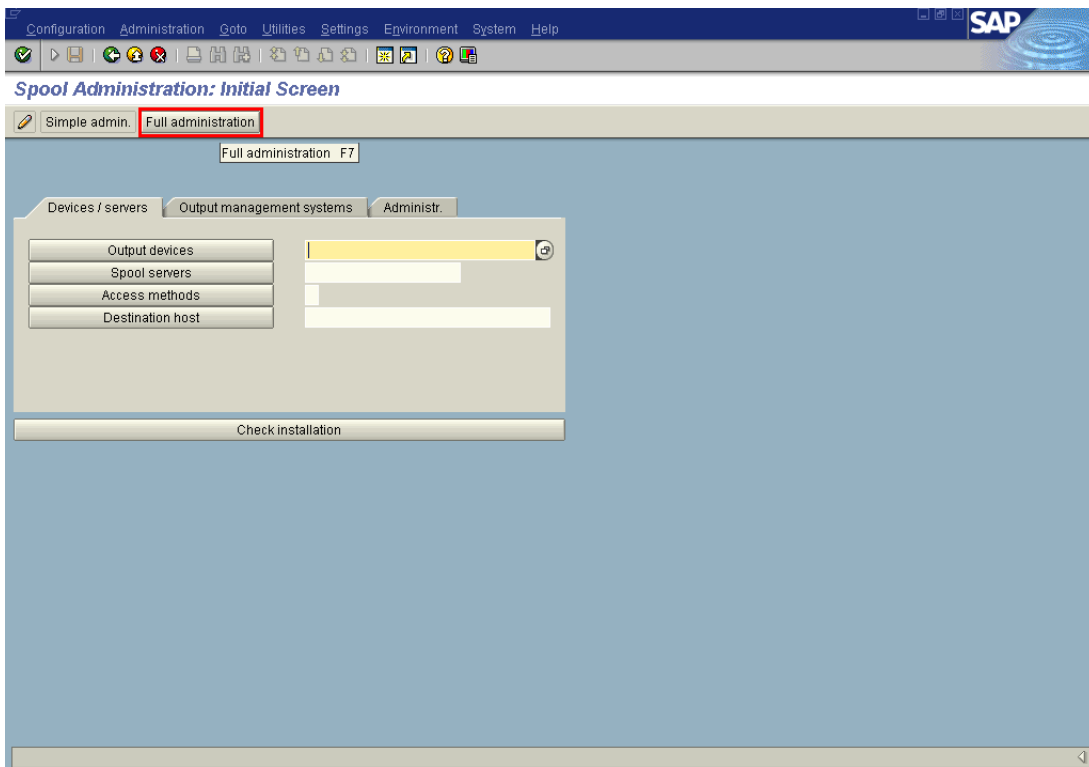


© Copyright 2006 SAP AG, All rights reserved.

### 3. Verification of Device Type File

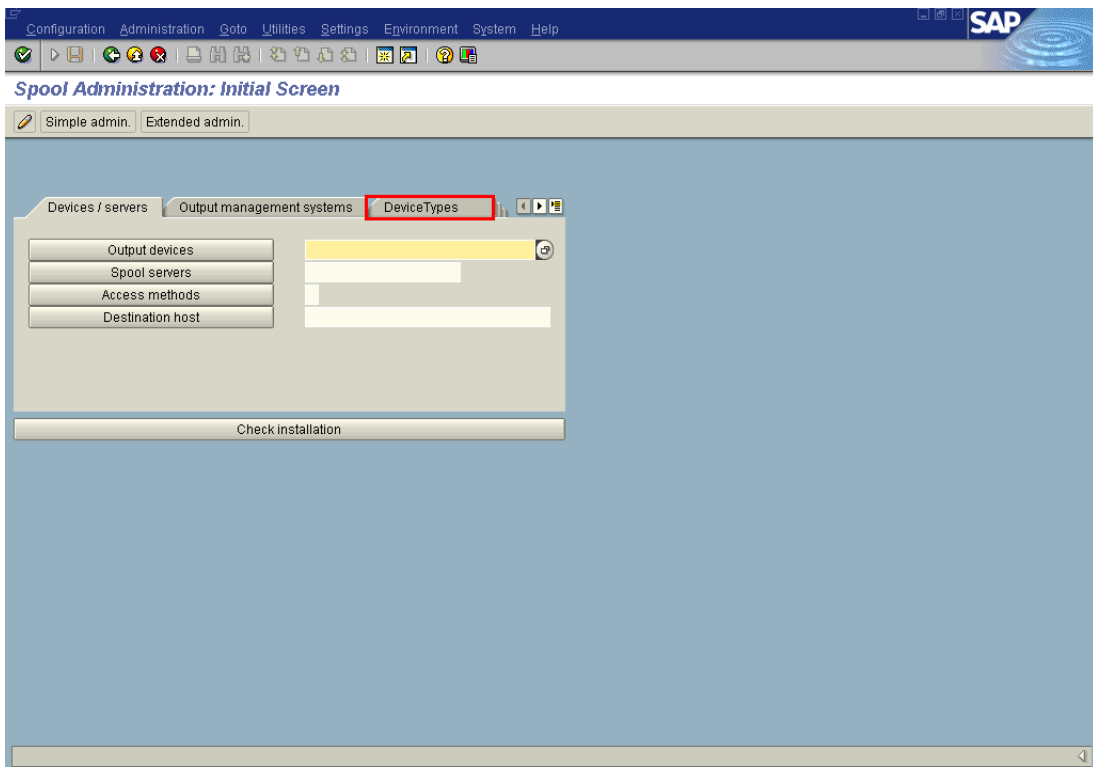
Once the device type is imported, it needs to be verified whether the newly imported device type appears in the standard list of all device types in SAP R/3 or not. To verify this same, follow the steps given below.

In the initial screen of SAP, type the transaction code “**SPAD**” in the command window and press “Enter”, the following screen is displayed.



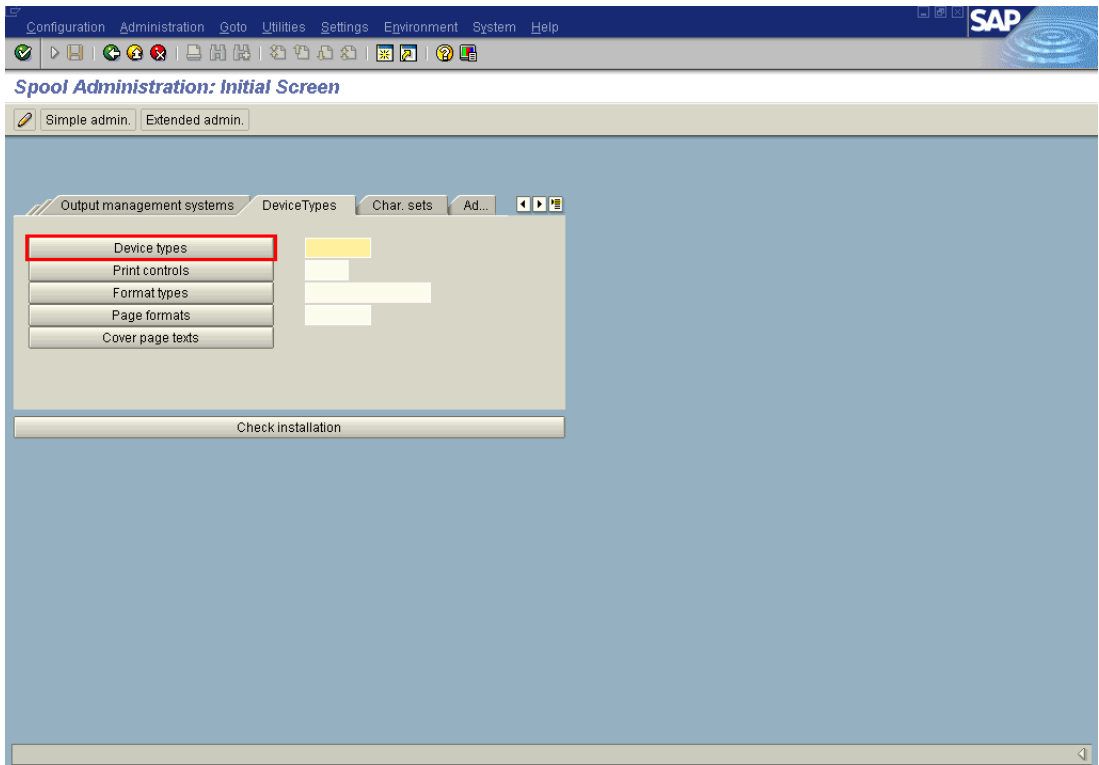
© Copyright 2006 SAP AG, All rights reserved.

Click on **Full administration** and the following screen will be displayed.



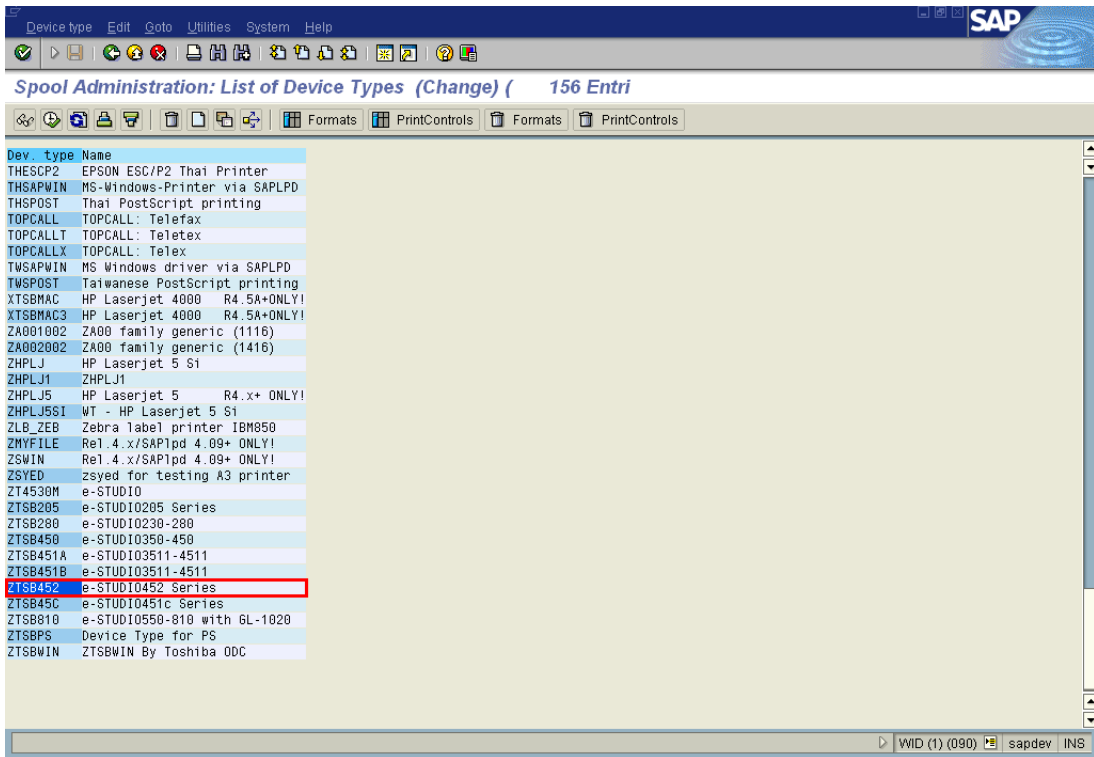
© Copyright 2006 SAP AG, All rights reserved.

Click on the **Device Types**.



© Copyright 2006 SAP AG, All rights reserved.

On clicking on **Device types**, list of device types will be displayed as in following screen.



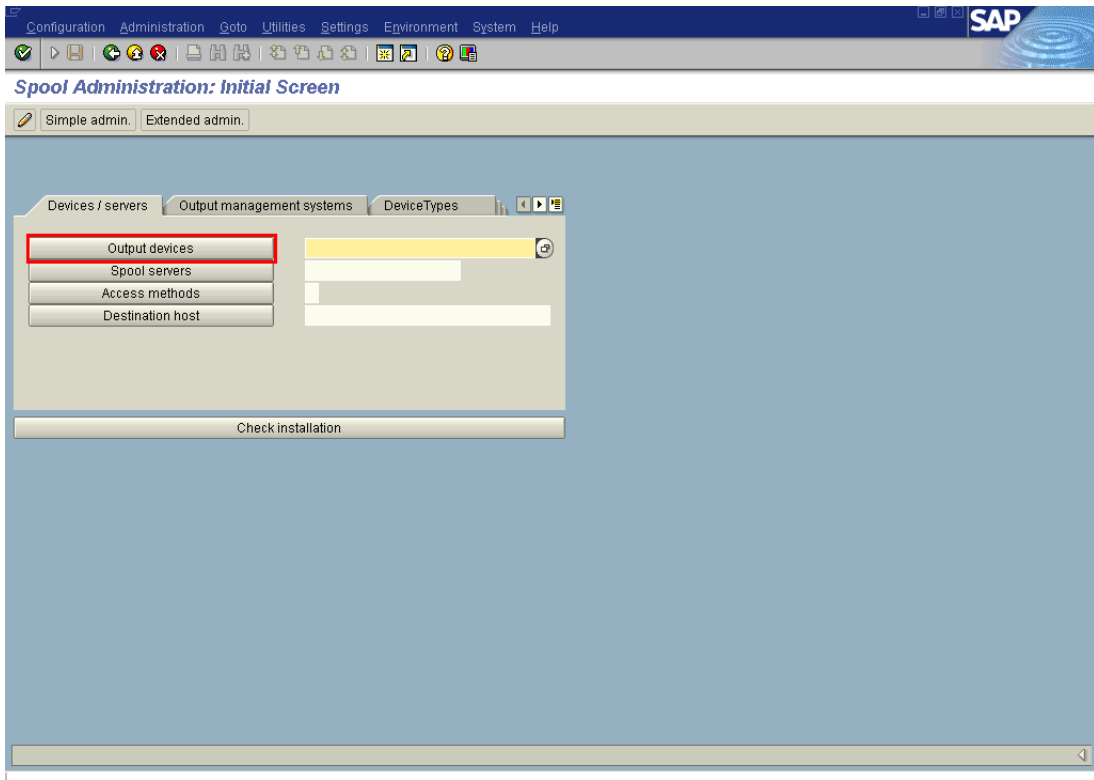
© Copyright 2006 SAP AG, All rights reserved.

The newly imported device type **ZTSB452** should appear in this list of device type. If the **ZTSB452** is not displayed, it implies that import has not been successful for which the Installation procedure described earlier needs to be repeated and verified.

## 4. Creation of Output Device

In SAP R/3, a device type needs to be assigned to an Output device to utilise its printing features. Follow the procedure describe below to create an output device and assign a device type to it.

In the initial screen of SAP, type the transaction code “SPAD” in the command window and press “Enter”, the following screen is displayed.



© Copyright 2006 SAP AG, All rights reserved.

Click on the “**Output devices**” and the following screen is displayed.

Output device Edit Goto Extras Utilities System Help

SAP

Spool Administration: List of Output Devices (Change) ( 34 ent

Dev.	Create	Shift+F1	pe	Spool servers	Location or message
4530m	F	ZT4530M			
BARCODE200	S	ZTSB200		sapdev_WID_00	
6L1020	F	ZTSB810			
HP LaserJet 8000 DN PCL 6	F	ZHPLJ			
HP-Su11th	F	HPLJ4000			
HPBARCODE	F	ZHPLJ5			
HPL2	F	HPLJ_I1			
HPLJ4000	F	HPLJ4000			
HP LaserJet 8000DN PCL	F	HPLJ5S1			
HP LaserJet 8000DN PCL 6	F	HPLJ5S1			
HP LaserJet 8000DN PCL 6 [1]	F	HPLJ5S1			
HP SARJAPUR1STFL00R0CS	F	HPLJ5S1			
HP SARJAPUR1ST6ROUP	F	HPLJ5S1			
HP_LJ4050_PCL	F	HPLJ5			
LQ1050	F	EPLQ550			
LQ10501	F	EPLQ550			
MY SWIN	F	SWIN			aaaa
MYBARCODE200	F	ZTSB200			
MYTWSAPWIN	F	TWSAPWIN			
RISH1	F	ZTSB200			
SAPWINBARCODE	F	SAPWIN			
TTECBARCODE	S	ZMYFILE		sapdev_WID_00	
ZEBRA	F	ZLB_ZEB			
ZHPCHECK	F	ZHPLJ1			
ZTSB00	F	HPLJ111D			
cjv2	F	ZTSB200			
hpsarjapur1stocs2	F	HPLJ5S1			
lq10502	F	EPLQ550			
printronix	F	LB_PRI			
printronix2	F	LB_PRI			
sarjapur1q1050	F	EPLQ550			
std	F	SAPWIN			
test	F	ZLB_ZEB			

WID (1) (090) sapdev INS

© Copyright 2006 SAP AG, All rights reserved.

Press on the “Create” button, the following screen will be displayed.

#### 4. Creation of Output Device (Cont.)

Output device: **HROD** Short name:

Generic device on frontend

DeviceAttributes: **HostSpoolAccMethod** Output attributes

Device type: **ZTSB452 : e-STUDIO452 Series**

Device class: **ZTSB452 : e-STUDIO452 Series**

Authorization group: **ZTSB452 : e-STUDIO452 Series**

Model:

Location:

Message:

☐ Lock printer in SAP System

WID (1) (090) sapdev INS

© Copyright 2006 SAP AG, All rights reserved.

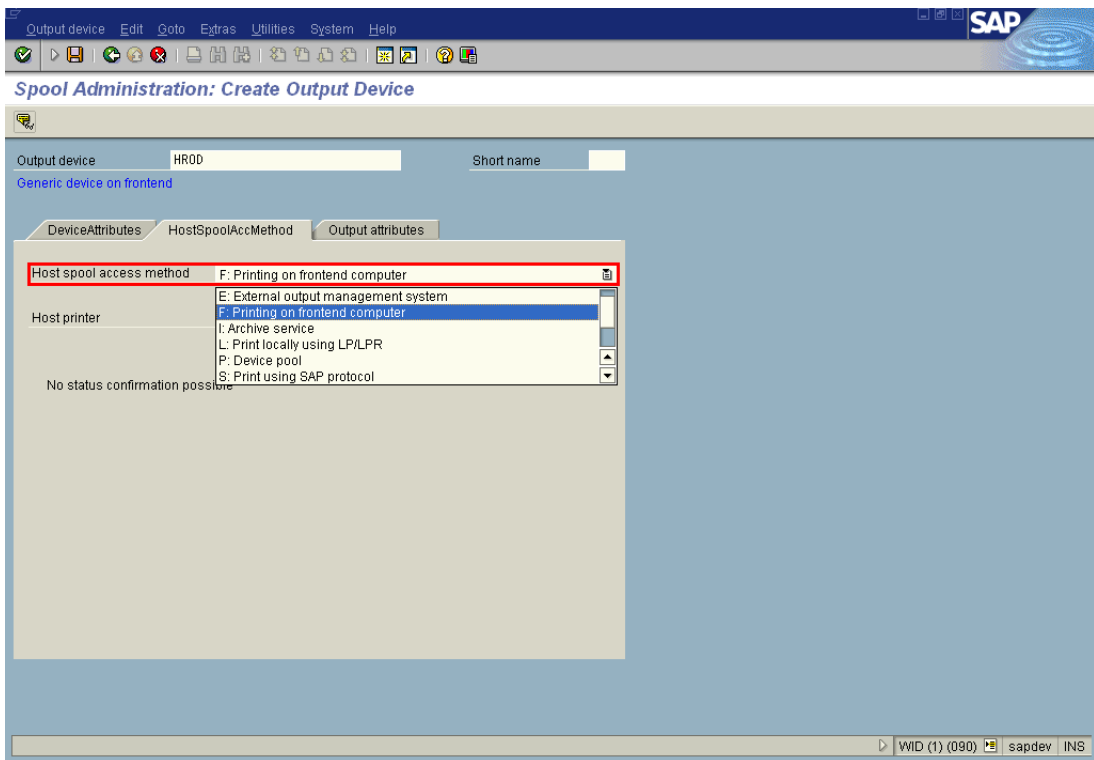
Enter the printer name (**HROD** in the above mentioned example)

Associate output device **ZTSB452: e-STUDIO452** device type.

Make sure Device class is "Standard printer".

Click "**HostSpoolAccMethod**" to visit next part of output device configuration as shown in following screen.

Subsequently choose the appropriate “**Host spool access method**” in the screen displayed below. Here it is selected as “**F**”.



© Copyright 2006 SAP AG, All rights reserved.

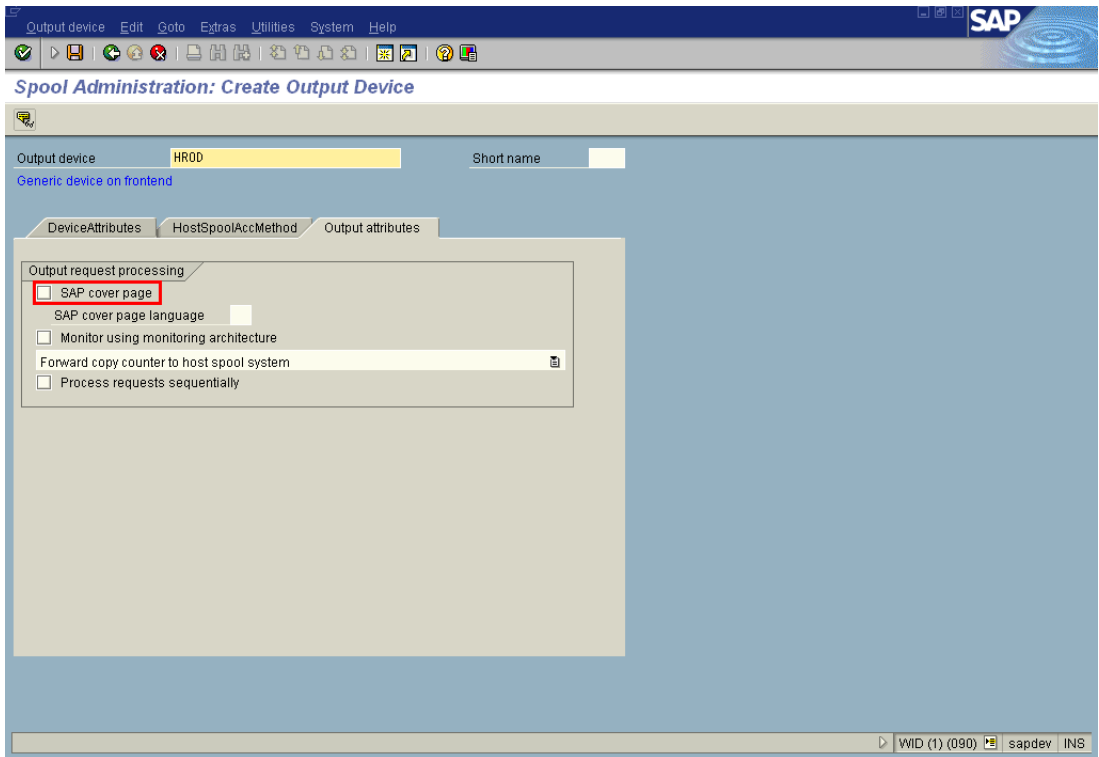
#### 4. Creation of Output Device (Cont.)

The screenshot shows the SAP Spool Administration: Create Output Device dialog box. The 'Output device' field is set to 'HR00' and the 'Short name' field is empty. The 'Generic device on frontend' checkbox is checked. The 'Output attributes' tab is selected, showing the 'Host spool access method' as 'F: Printing on frontend computer'. The 'Host printer' field is set to 'e-Studio452Series'. The status 'No status confirmation possible' is displayed at the bottom of the dialog box. The SAP logo is visible in the top right corner of the window.

© Copyright 2006 SAP AG, All rights reserved.

Enter the **Host printer** name **e-Studio452Series**.

Click on **Output attributes** to visit, next part of output device configuration.



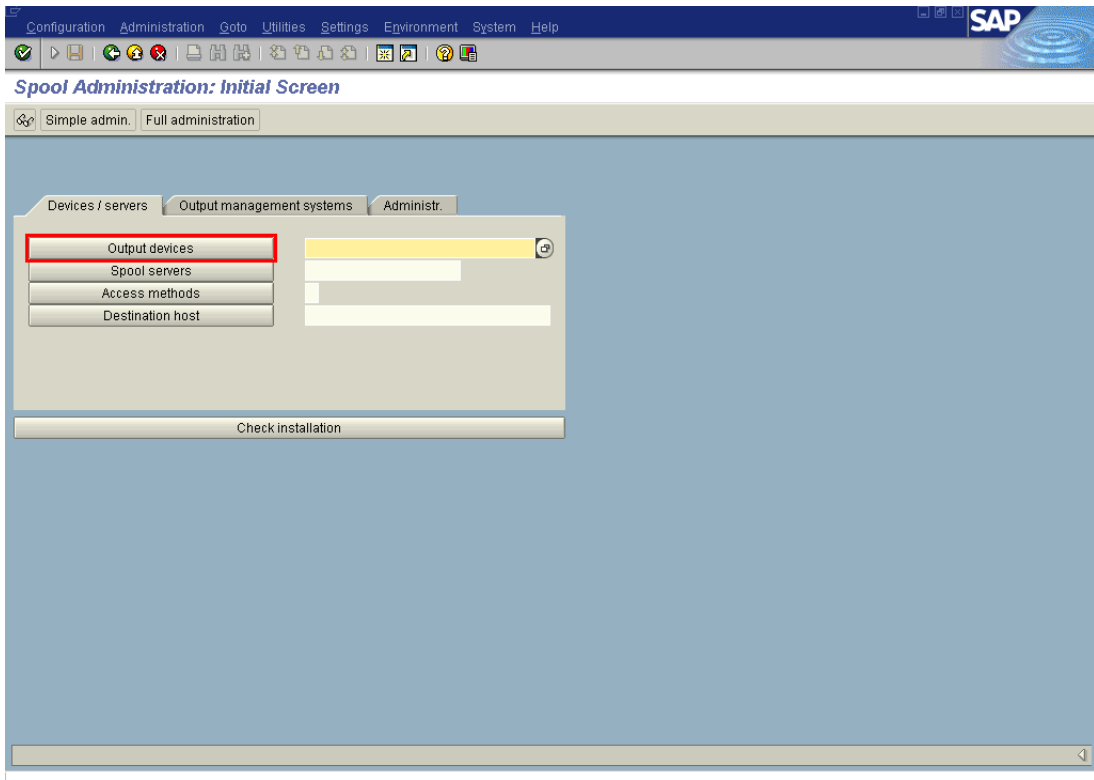
© Copyright 2006 SAP AG, All rights reserved.

(Optional), Administrator can enable printer for printing **cover page** by checking this check box.  
Press **“SAVE”** and the Output device will be created.

## 5. Verification of Output Device

Once the output device is created, it needs to be verified whether the newly created output device appears in the standard list of all output device in SAP R/3 or not. To verify this same, follow the steps given below.

In the initial screen of SAP, type the transaction code “SPAD” in the command window and press “Enter”, the following screen is displayed.



© Copyright 2006 SAP AG, All rights reserved.

Click on the **Output devices** to get list of all output device configured on the SAP/R3 system. Newly created output device **HROD** should appear in this list.

Dev.	Dev. type	Spool servers	Location or message
4530m	F	ZT4530M	
BARCODE280	S	ZTSB280	sapdev_WID_00
6L1020	F	ZTSB810	
HP LaserJet 8000 DN PCL 6	F	ZHPLJ	
HP-Su11th	F	HPLJ4000	
HPBARCODE	F	ZHPLJ5	
HPL2	F	HPLJ_I1	
HPLJ4000	F	HPLJ4000	
HPLaserJet8000DNPCl	F	HPLJ5S1	
HPLaserJet8000DNPCl6	F	HPLJ5S1	
HPLaserJet8000DNPCl6[1]	F	HPLJ5S1	
HPSARJAPUR1STFL00R0CS	F	HPLJ5S1	
HPSARJAPUR1ST6ROUP	F	HPLJ5S1	
HP_LJ4050_PCL	F	HPLJ5	
<b>HROD</b>	<b>F</b>	<b>ZTSB452</b>	
LQ1050	F	EPLQ550	
LQ1050i	F	EPLQ550	
MY SWIN	F	SWIN	aaaa
MYBARCODE280	F	ZTSB280	
MYTWSAPWIN	F	TWSAPWIN	
RISHI	F	ZTSB280	
SAPWINBARCODE	F	SAPWIN	
TTECBARCODE	S	ZMYFILE	sapdev_WID_00
ZEBRA	F	ZLB_ZEB	
ZHPCHECK	F	ZHPLJ1	
ZTSB00	F	HPLJ1110	
cjv2	F	ZTSB280	
hpsarjapur1stocs2	F	HPLJ5S1	
lq10502	F	EPLQ550	
printronix	F	LB_PRI	
printronix2	F	LB_PRI	
sarjapur1q1050	F	EPLQ550	
std	F	SAPWIN	

© Copyright 2006 SAP AG, All rights reserved.

Newly created output device **HROD** should appears in the list. If newly created output device (NEW) is now displayed in the list, repeat the process of creating output device.

## 6. Specific Features and Configuration

### 6.1 Input Tray Selection

No PJL control is available, so it should be implemented using PCL escape command sequence.

Automatic	<esc>&l17H
Drawer 1	<esc>&l01H
Drawer 2	<esc>&l4H
LCF	<esc>&l5H
Drawer 3	<esc>&l5H
Drawer 4	<esc>&l21H
Bypass Tray	<esc>&l2H

### 6.2 Output Tray Selection

Following PJL would be used to achieve vaNewus OUTPUT Tray Selection:

Output Tray 1

@PJL SET OUTBIN=OPTIONALOUTBIN1

Output Tray 2

@PJL SET OUTBIN=OPTIONALOUTBIN2

Inner tray

@PJL SET OUTBIN=UPPER

Job Separator Upper

@PJL SET OUTBIN=OPTIONALOUTBIN4

Job Separator Lower

@PJL SET OUTBIN=OPTIONALOUTBIN5

### 6.3 Paper Selection

This control is accomplished using following PJL.

#@PJL SET PAPER=<PageCode>

Paper Size	Page Code
A3	A3
A4	A4
A5	A5
B4	B4
B5	B5
LETTER	LETTER
LEGAL	LEGAL
LEDGER	LEDGER
STATEMENT	STATEMENT
FOLIO	FOLIO
COMPUTER	COMPUTER
8.5 inch Square	SQ85
13 inch Legal	LEGAL13

## 6.4 Duplex Selection

---

Following PJL would be used to achieve vaNewus duplex selections:

No Duplex

@PJL COMMENT DSSC PRINT DUPLEX=0

Long Edge Duplex

@PJL COMMENT DSSC PRINT DUPLEX=1

Short Edge Duplex

@PJL COMMENT DSSC PRINT DUPLEX=2

## 6.5 Orientation Selection

Following PJL would be used to achieve vaNewus duplex selections:

Portrait

@PJL COMMENT DSSC PRINT ORIENTATION=0

Landscape

@PJL COMMENT DSSC PRINT ORIENTATION=1

## 6.6 Hole Punch

Following PJL would be used to achieve control over Hole-punching:

No Hole Punch

@PJL COMMENT DSSC PRINT HOLEPUNCH=0

Hole Punch Long Edge without Rotation

@PJL COMMENT DSSC PRINT HOLEPUNCH=1

Hole Punch Short Edge without Rotation

@PJL COMMENT DSSC PRINT HOLEPUNCH=2

Hole Punch Long Edge with 180 degree Rotation

@PJL COMMENT DSSC PRINT HOLEPUNCH=3

Hole Punch Short Edge with 180 degree Rotation

@PJL COMMENT DSSC PRINT HOLEPUNCH=4

## 6.7 Stapling Function

---

Following PJL would be used to achieve control over Stapling:

```
Stapling Mode Top Left (Portrait) / Top Right (Landscape)
  @PJL COMMENT DSSC PRINT STAPLING=769
Stapling Mode Left (Portrait) / Top (Landscape)
  @PJL COMMENT DSSC PRINT STAPLING=2
Stapling Mode Bottom Left (Portrait) / Top Left (Landscape)
  @PJL COMMENT DSSC PRINT STAPLING=33027
Stapling Mode Top Right (Portrait) / Bottom Right (Landscape)
  @PJL COMMENT DSSC PRINT STAPLING=387
Stapling Mode Right (Portrait) / Bottom (Landscape)
  @PJL COMMENT DSSC PRINT STAPLING=130
Stapling Mode Bottom Right (Portrait) / Bottom Left (Landscape)
  @PJL COMMENT DSSC PRINT STAPLING=33665
Stapling Mode Top (Portrait) / Bottom (Landscape)
  @PJL COMMENT DSSC PRINT STAPLING=512
Stapling Mode Bottom (Portrait) / Top (Landscape)
  @PJL COMMENT DSSC PRINT STAPLING=33280
```

## 6.8 Private Print

Following two PJLs would be used to achieve Private Print:

```
@PJL COMMENT DSSC PRINT PRINTMODE=PRIVATE
@PJL COMMENT DSSC PRINT PRIVPRINT=nnnnn
```

Where nnnnn is a string of alphanumeric characters and symbol characteres (ASCII code characters between 0x21 to 0x7E).

The password must be between 1 to 17 characters.

## 6.9 Proof Print

Following PJL would be used to achieve Proof Print:

```
@PJL COMMENT DSSC PRINT PRINTMODE=PROOF
```

## 6.10 Booklet and Saddle Stitch

Booklet printing can be achieved using

```
@PJL COMMENT DSSC PRINT BOOKLET=LT
```

Saddle stitch can be achieved using

```
@PJL COMMENT DSSC PRINT STAPLING=1028
```

Booklet function is dependent on Short Edge Duplex printing, Saddle stitch, Left to Right Printing, and the type of paper to be used. Hole punching also needs to be disabled. Therefore, for Booklet printing, the following combination of commands needs to be enabled.

```
#@PJL COMMENT DSSC PRINT HOLEPUNCH=0
#@PJL COMMENT DSSC PRINT DUPLEX=2
#@PJL COMMENT DSSC PRINT STAPLING=1028
#@PJL COMMENT DSSC PRINT LEFTTORIGHT=1
#@PJL COMMENT DSSC PRINT BOOKLET=LT
#@PJL SET PAPER=<PageCode>
```

Paper Size	Page Code
A3	A3
A4	A4
A5	A5
B4	B4
B5	B5
LETTER	LT
LEGAL	LG
LEDGER	LD
STATEMENT	ST
FOLIO	FO
SQ85	SQ
13 inch Legal	13

## 6.11 Department Code

Following PJL would be used to have department code based access to the printer:

If Department code is NULL

```
@PJL COMMENT DSSC PRINT ACCESSCODE=
```

If Department Code is 5 digit number (nnnnn)

```
@PJL COMMENT DSSC PRINT ACCESSCODE=nnnnn
```

## 6.12 BOX Mode

---

Following combination of PJL would be used to have BOX mode printing:

For Public Box use 000, for private use three digit no

```
@PJL COMMENT DSSC PRINT PRINTMODE=BOX\r\n
```

```
@PJL COMMENT DSSC BOX BOXNO=nnn\r\n
```

```
@PJL COMMENT DSSC BOX BOXNAME=\r\n
```

```
@PJL COMMENT DSSC BOX BOX=1\r\n
```

If Private Box is used, then set 5digit BOX PASSWORD

```
@PJL COMMENT DSSC BOX BOXPASSWORD=12345\r\n
```

**MULTIFUNCTIONAL DIGITAL SYSTEMS**  
**SAP R/3 Printing Device Type File Installation Guide**

---

 **e-STUDIO350/450**

 **e-STUDIO352/452**

**TOSHIBA TEC CORPORATION**

2-17-2, HIGASHIGOTANDA, SHINAGAWA-KU, TOKYO, 141-8664, JAPAN