

TOSHIBA

MULTIFUNCTIONAL DIGITAL SYSTEMS

SAP R/3 Printing Device Type File Installation Guide

 e-STUDIO281c/351c/451c

Table of Contents

1. Introduction	1
1.1 SAP Printing Environment	1
2. Device Files	2
3. Installation	3
4. Verification of Device Type File.....	11
5. Creation of Output Device.....	15
6. Verification of Output Device	21
7. Specific Features and Configuration.....	23
7.1 Pure black and Pure gray mode Selection	23
7.2 Image Quality Type Selection	23
7.3 Halftone Type Selection.....	23
7.4 Black over print mode Selection	23

<Trademarks>

SAP, R/3, mySAP, mySAP.com, xApps, xApp, SAP NetWeaver, and other SAP products and services mentioned herein as well as their respective logos are trademarks or registered trademarks of SAP AG in Germany and in several other countries all over the world. All other product and service names mentioned are the trademarks of their respective companies.

<Warning>

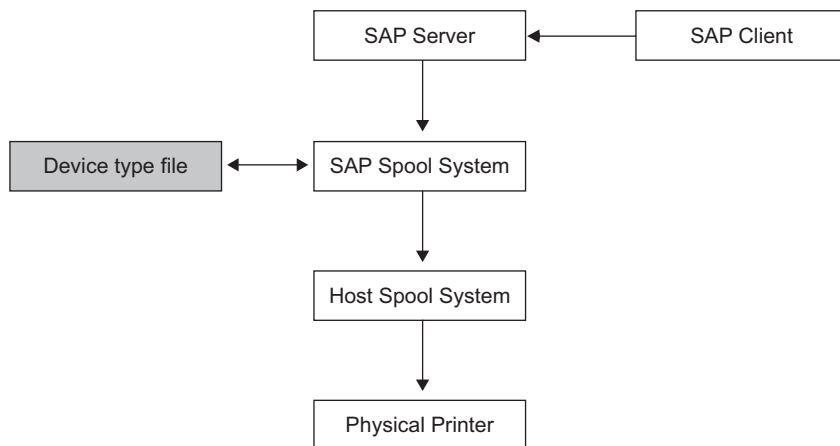
You may not, nor cause or permit any third party to, modify, adapt, merge, translate, reverse compile, reverse assemble, or reverse engineer the Software. You may not use the Software, except in accordance with this license. No title to the intellectual property in the Software is transferred to you and full ownership is retained by TTEC or its suppliers. Source code of the Software is not licensed to you. You will be held legally responsible for any copyright infringement, unauthorized transfer, reproduction or use of the Software or its documentation.



1. Introduction

This document describes the step-wise procedure to install and configure the device type for Toshiba e-STUDIO451c Series printers in SAP R/3. SAP administrator can implement the printer specific features by inserting the necessary PJI/PCL commands given in the Device configuration section.

1.1 SAP Printing Environment



1. SAP Client raises the print Request.
2. SAP Server will pass on the request to SAP spool system based on type of printer selected by the Client program.
3. SAP spool system will consult Device type file (.PRI File) corresponding to the output device. Based on configuration and control information present in Device type file, it will generate Printing data and Control Information.
4. Based on the "Access method" configured for the output device, SAP Printing Subsystem will operate in the respective way

2. Device Files

Device type	Supported features	Limitation
ZTSB45C.PRI	Color printing is supported for ABAP listing and SAP forms.	Cover page printing is not supported for ABAP listing.
ZTSB45CA.PRI	Color printing is supported for SAP forms.	Color Printing is not supported for ABAP list printing.

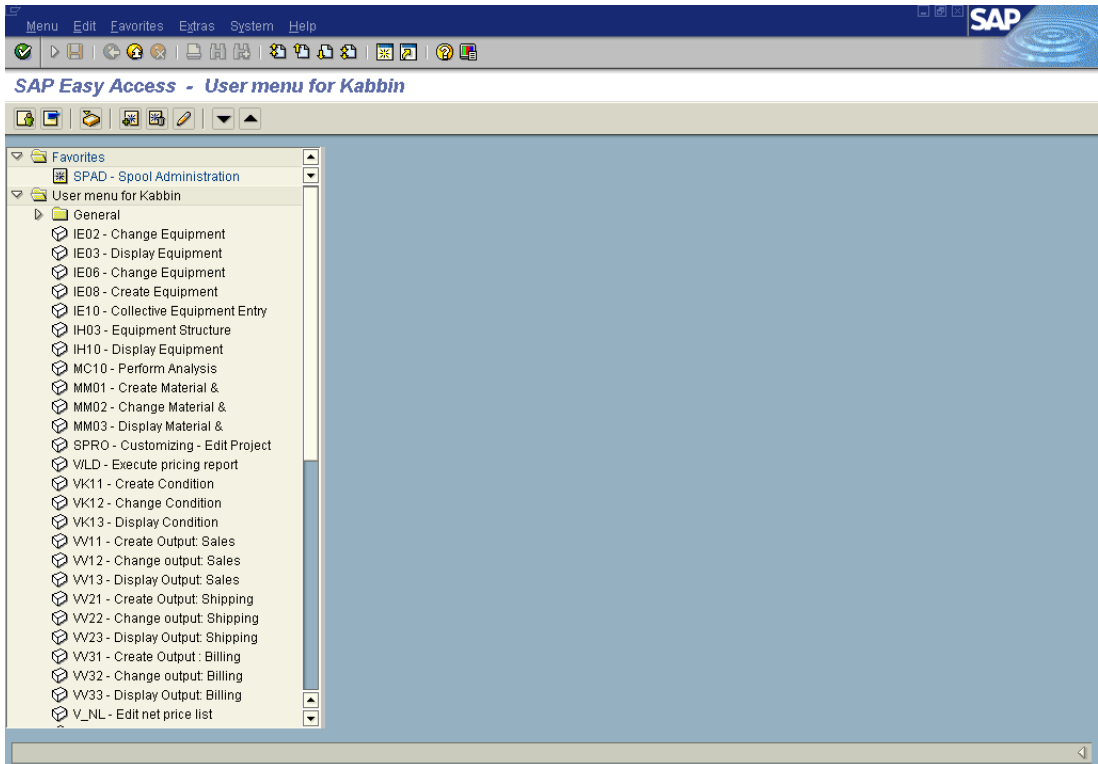
The installation procedure for "ZTSB45C.PRI" is described in this guide.

If you want to use the cover page printing function, install "ZTSB45CA.PRI".

However, color printing using ABAP cannot be performed.

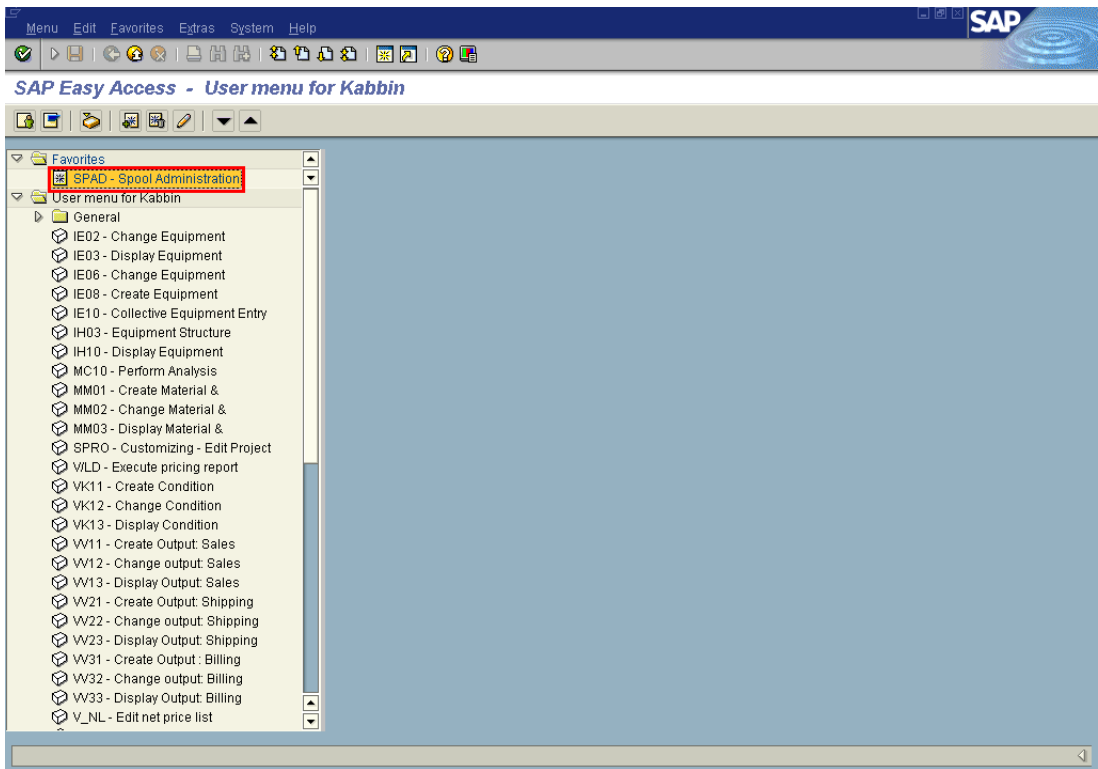
3. Installation

To install a new device type into SAP, follow the procedure described below.
After you have logged on to SAP, the following screen is displayed.



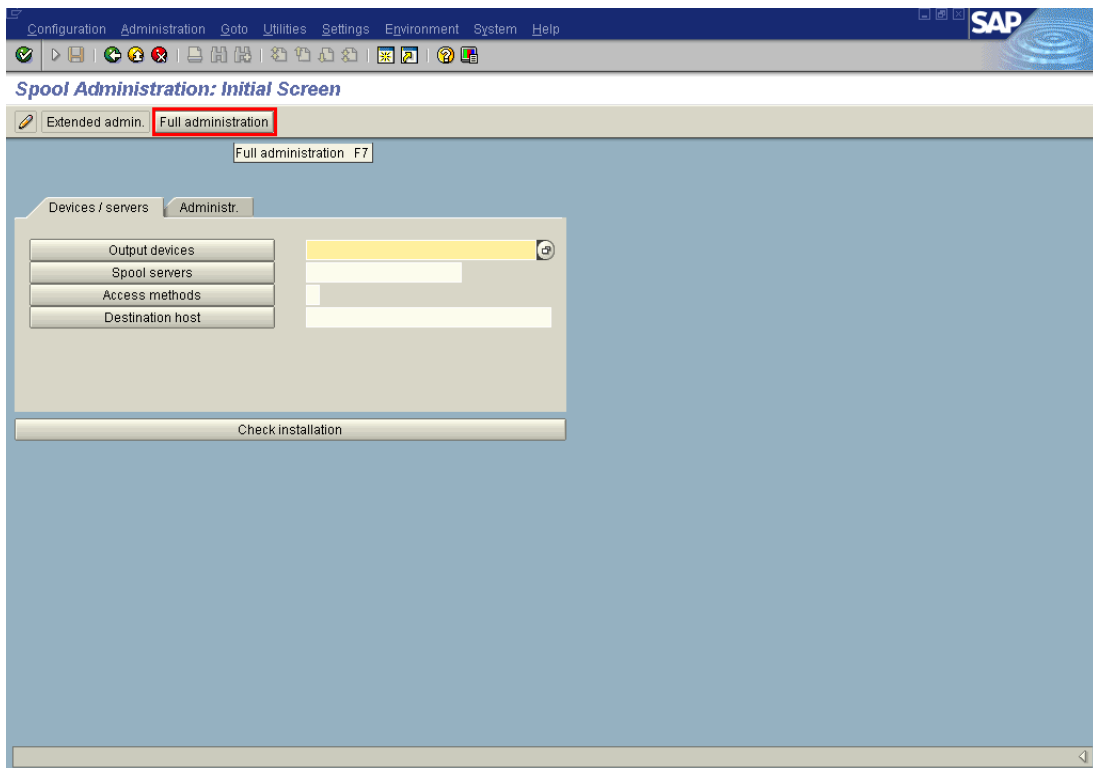
© Copyright 2005 SAP AG, All rights reserved.

Click on the “**Spool Administration**” tab.



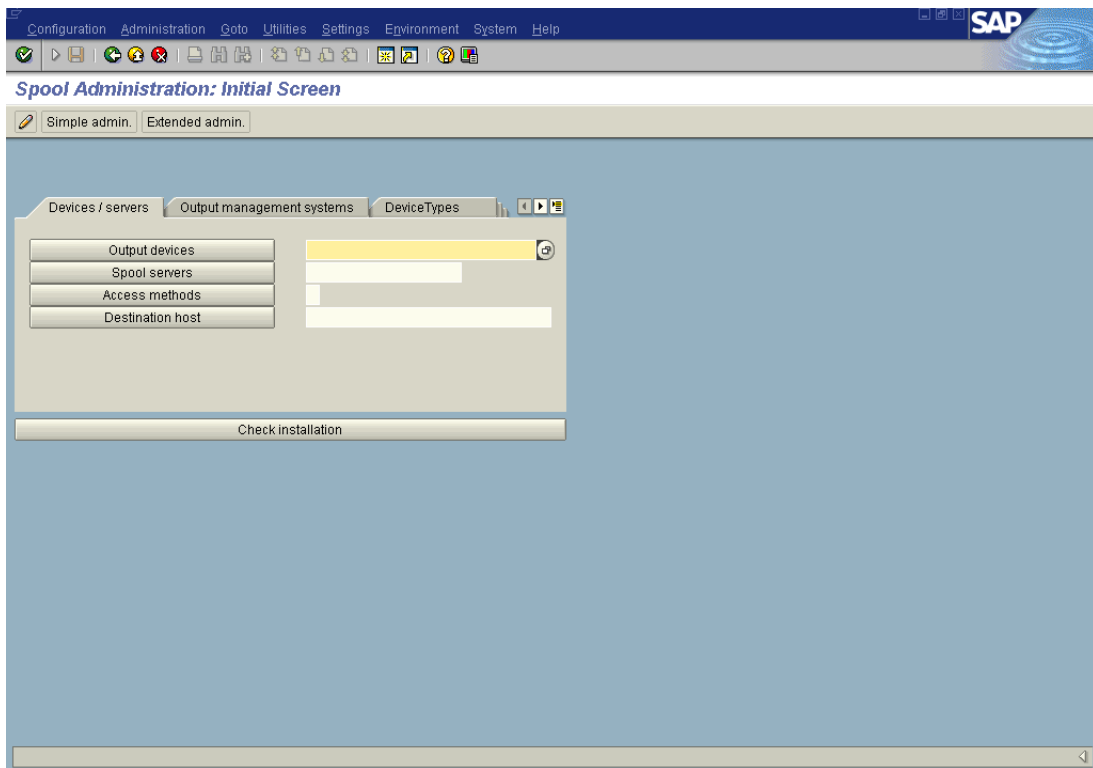
© Copyright 2005 SAP AG, All rights reserved.

Once you Press enter the following screen is displayed.



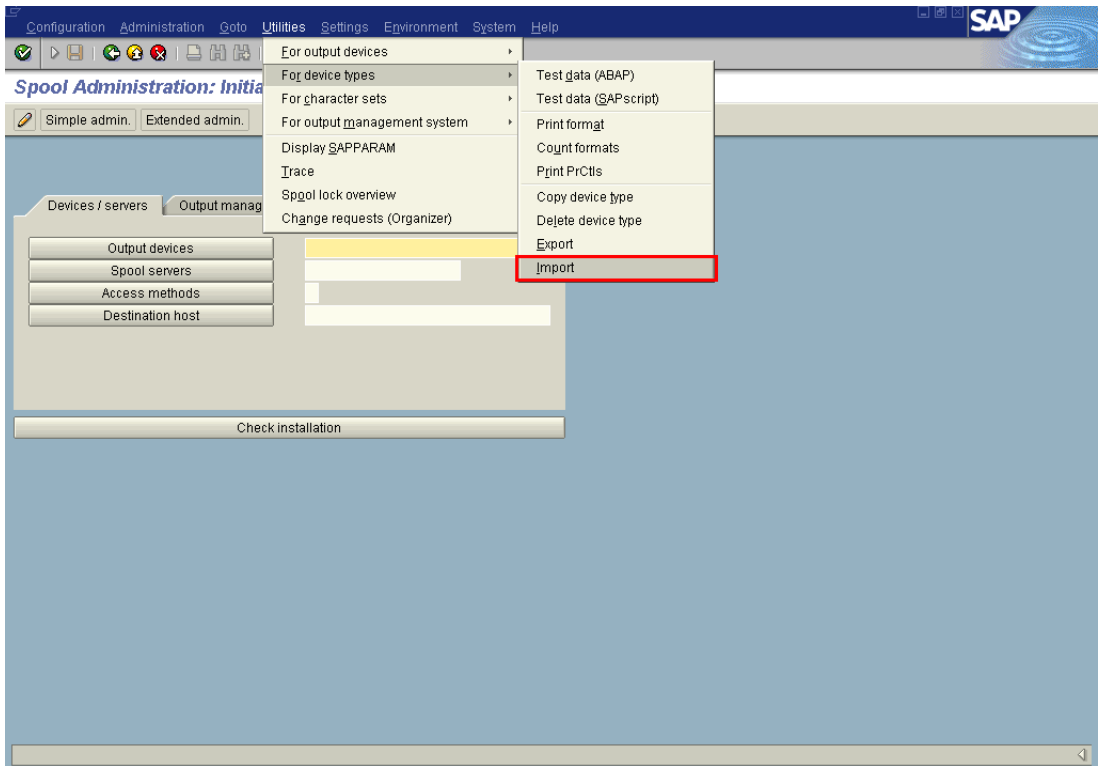
© Copyright 2005 SAP AG, All rights reserved.

Press on the push-button **"Full administration"**. The following screen is displayed.



© Copyright 2005 SAP AG, All rights reserved.

In the menu bar, go to **“Utilities”** → **“For device types”** → **“Import”** as displayed in the following screen.



© Copyright 2005 SAP AG, All rights reserved.

Once you press “**Import**”, the following screen is displayed.

Select the radio button "**Device Type**" and enter the name of the device type (.PRI) file without file extension in the input field box "**Object name**". (E.g. if the device type file name is ZTSB45C.pri only ZTSB45C) as shown in the screen below. Make sure the entry in the field **Mode (EXPORT/IMPORT)** is written as "**IMPORT**".

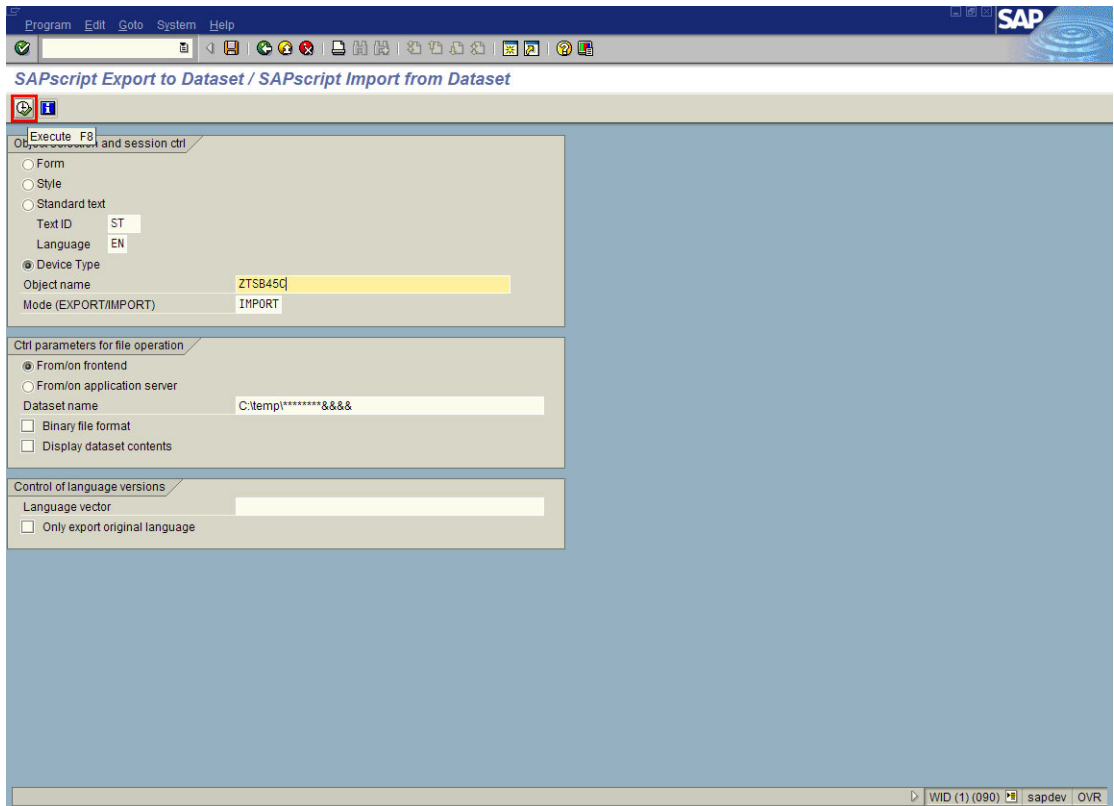
The screenshot shows the SAPscript Export to Dataset / SAPscript Import from Dataset dialog box. The 'Object selection and session ctrl' section has the 'Device Type' radio button selected. The 'Object name' field contains 'ZTSB45C' and the 'Mode (EXPORT/IMPORT)' field contains 'IMPORT'. The 'Ctrl parameters for file operation' section has the 'From/on frontend' radio button selected, and the 'Dataset name' field contains 'C:\temp*****&&&'. The 'Control of language versions' section has the 'Language vector' field empty and the 'Only export original language' checkbox unchecked. The status bar at the bottom shows 'WID (1) (090) sapdev OVR'.

Object selection and session ctrl	
<input type="radio"/> Form	
<input type="radio"/> Style	
<input type="radio"/> Standard text	
Text ID	ST
Language	EN
<input checked="" type="radio"/> Device Type	
Object name	ZTSB45C
Mode (EXPORT/IMPORT)	IMPORT

Ctrl parameters for file operation	
<input checked="" type="radio"/> From/on frontend	
<input type="radio"/> From/on application server	
Dataset name	C:\temp*****&&&
<input type="checkbox"/> Binary file format	
<input type="checkbox"/> Display dataset contents	

Control of language versions	
Language vector	
<input type="checkbox"/> Only export original language	

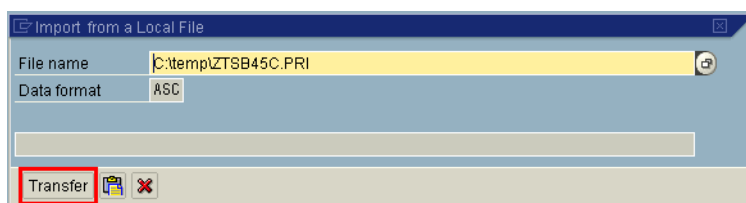
© Copyright 2005 SAP AG, All rights reserved.



© Copyright 2005 SAP AG, All rights reserved.

Press **"F8"** to proceed with import.

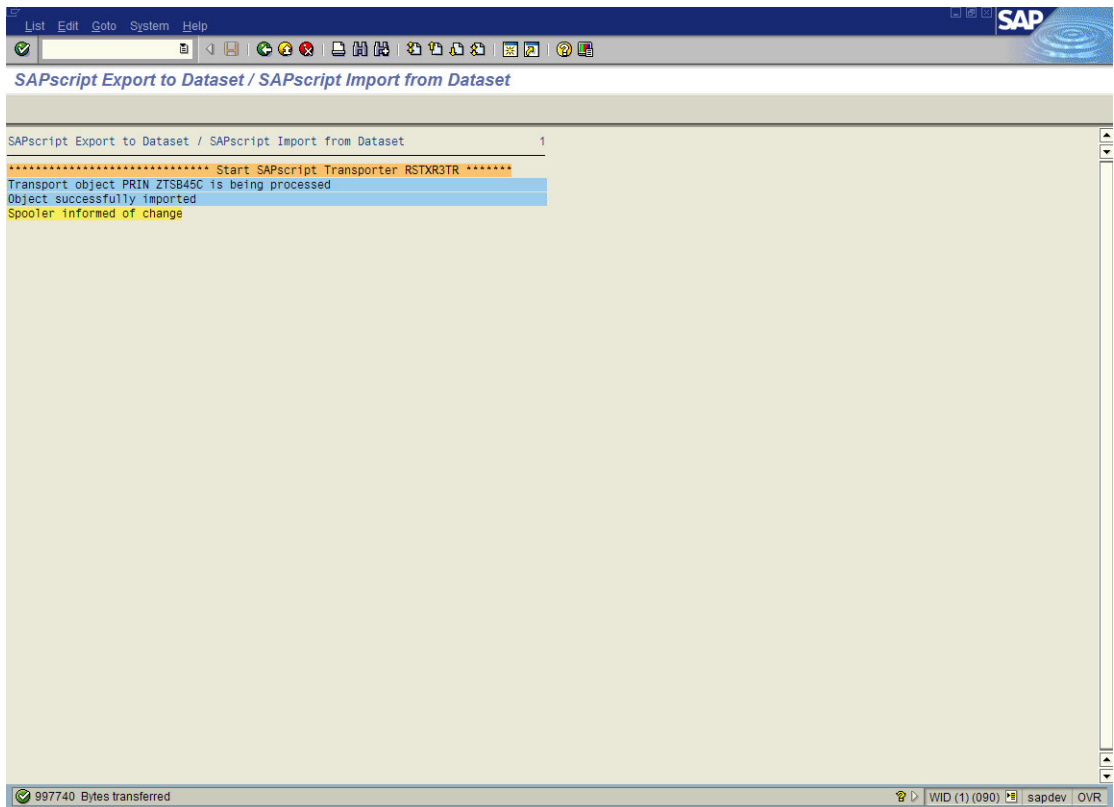
To locate the ZTSB45C.PRI on local system, **Press** this button.



© Copyright 2005 SAP AG, All rights reserved.

After locating PRI file, the screen displayed would be as above.
Import process will start as soon as **Transfer** is pressed.

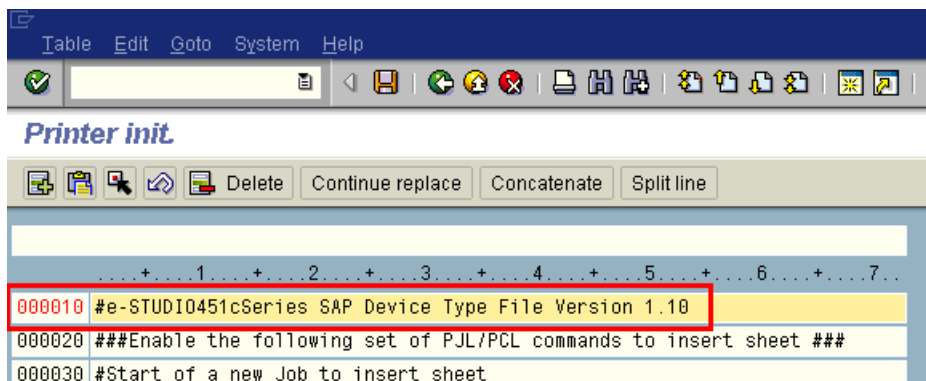
On successful completion of import, the following message would be displayed.



© Copyright 2005 SAP AG, All rights reserved.

Version Check:

The Device type file version is described in the installed PRI file.
Check it in the "Printer init." menu of the SAP system.

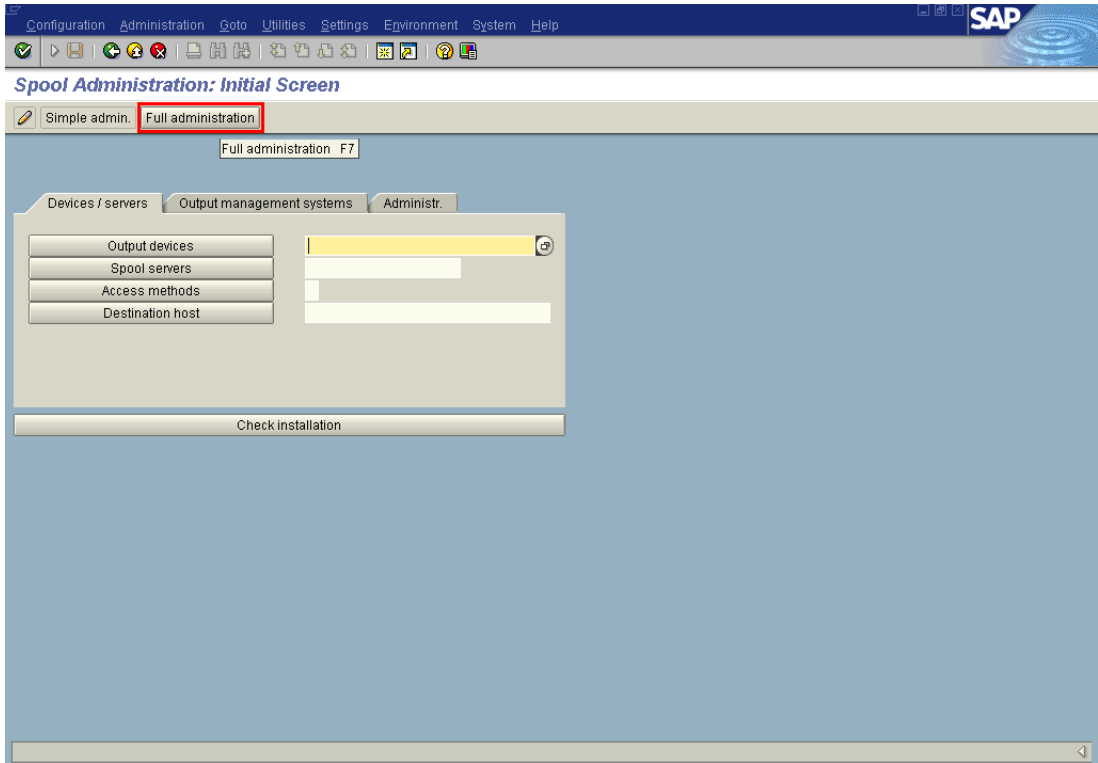


© Copyright 2006 SAP AG, All rights reserved.

4. Verification of Device Type File

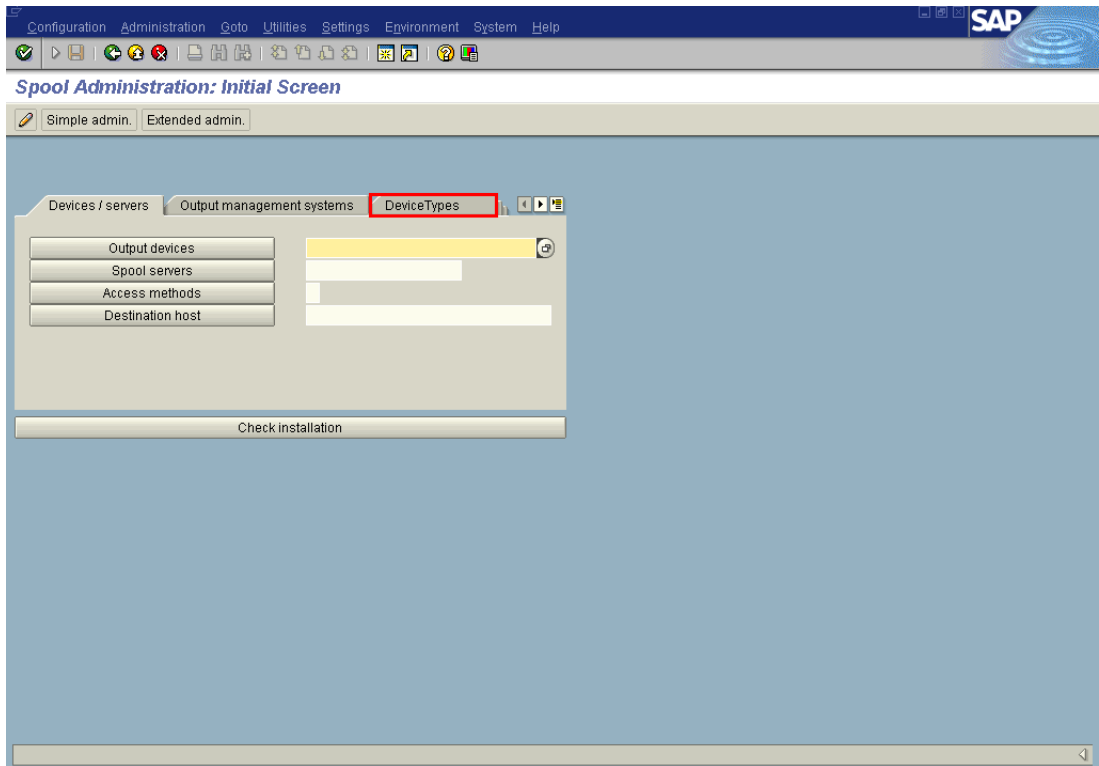
Once the device type is imported, it needs to be verified whether the newly imported device type appears in the standard list of all device types in SAP R/3 or not. To verify this same, follow the steps given below.

In the initial screen of SAP, type the transaction code **"SPAD"** in the command window and press "Enter", the following screen is displayed.



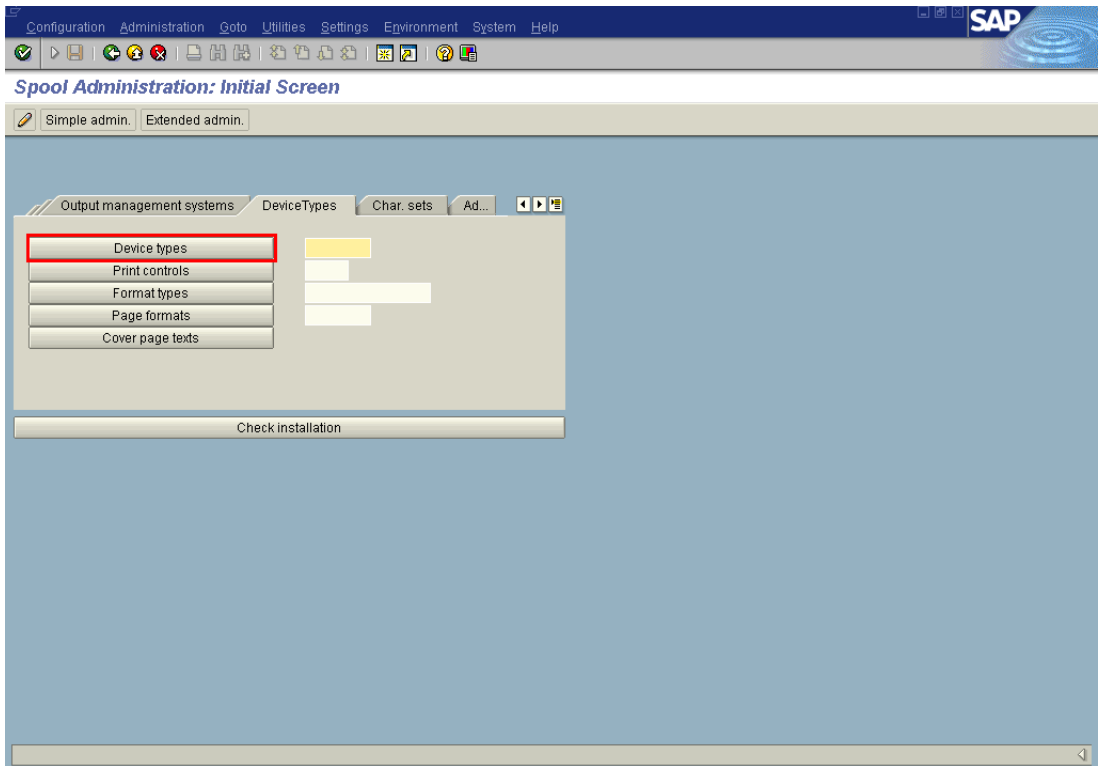
© Copyright 2005 SAP AG, All rights reserved.

Click on **Full administration** and the following screen will be displayed.



© Copyright 2005 SAP AG, All rights reserved.

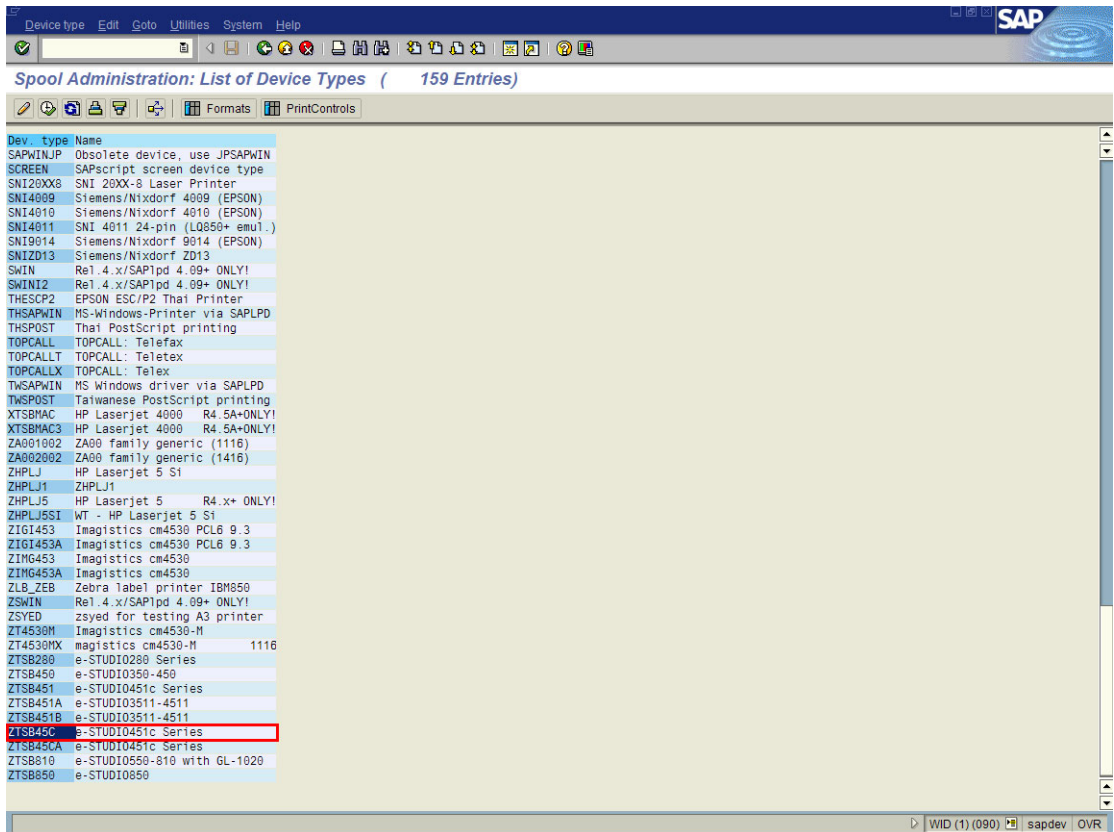
Click on the **Device Types**.



© Copyright 2005 SAP AG, All rights reserved.

On clicking on **Device types**, list of device types will be displayed as in following screen.

4. Verification of Device Type File (Cont.)



Device type Edit Goto Utilities System Help

Pool Administration: List of Device Types (159 Entries)

Formats PrintControls

Dev. type	Name
SAPWINJP	Obsolete device, use JPSAPWIN
SCREEN	SAPscript screen device type
SNI20XX3	SNI 20XX-3 Laser Printer
SNI4009	Siemens/Nixdorf 4009 (EPSON)
SNI4010	Siemens/Nixdorf 4010 (EPSON)
SNI4011	SNI 4011 24-pin (LQ850+ emul.)
SNI9014	Siemens/Nixdorf 9014 (EPSON)
SNI2D13	Siemens/Nixdorf ZD13
SWIN	Rel. 4.x/SAP1pd 4.09+ ONLY!
SWIN12	Rel. 4.x/SAP1pd 4.09+ ONLY!
THESCP2	EPSON ESC/P2 Thai Printer
THSAPWIN	MS-Windows-Printer via SAPLPD
THSPOST	Thai PostScript printing
TOPCALL	TOPCALL: Telefax
TOPCALLT	TOPCALL: Teletex
TOPCALLX	TOPCALL: Telex
TWSAPWIN	MS Windows driver via SAPLPD
TWSPOST	Taiwanese PostScript printing
XTSBNAC	HP Laserjet 4000 R4.5A+ONLY!
XTSBNAC3	HP Laserjet 4000 R4.5A+ONLY!
ZAG01002	ZAG0 family generic (1116)
ZAG02002	ZAG0 family generic (1416)
ZHPLJ	HP Laserjet 5 Si
ZHPLJ1	ZHPLJ1
ZHPLJ5	HP Laserjet 5 R4.x+ ONLY!
ZHPLJ5SI	WT - HP Laserjet 5 Si
ZIGI453	Imagistics cm4530 PCL6 9.3
ZIGI453A	Imagistics cm4530 PCL6 9.3
ZIMG453	Imagistics cm4530
ZIMG453A	Imagistics cm4530
ZLB_ZEB	Zebra label printer IBM850
ZSWIN	Rel. 4.x/SAP1pd 4.09+ ONLY!
ZSYED	zsyed for testing A3 printer
ZT4530M	Imagistics cm4530-M
ZT4530MX	magistics cm4530-M 1116
ZTSB280	e-STUDIO280 Series
ZTSB450	e-STUDIO350-450
ZTSB451	e-STUDIO451c Series
ZTSB451A	e-STUDIO3511-4511
ZTSB451B	e-STUDIO3511-4511
ZTSB45C	e-STUDIO451c Series
ZTSB45CA	e-STUDIO451c Series
ZTSB810	e-STUDIO550-810 with GL-1020
ZTSB850	e-STUDIO850

WID (1) (090) sapdev OVR

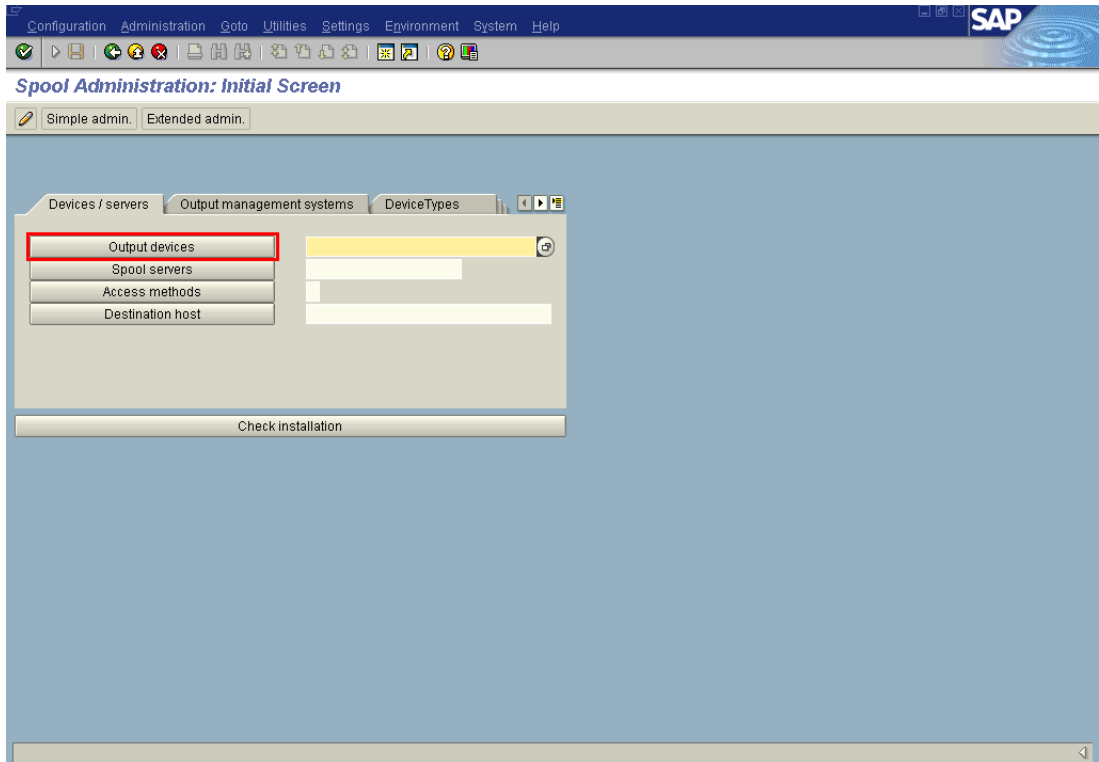
© Copyright 2005 SAP AG, All rights reserved.

The newly imported device type **ZTSB45C** should appear in this list of device type. If the **ZTSB45C** is not displayed, it implies that import has not been successful for which the Installation procedure described earlier needs to be repeated and verified.

5. Creation of Output Device

In SAP R/3, a device type needs to be assigned to an Output device to utilise its printing features. Follow the procedure describe below to create an output device and assign a device type to it.

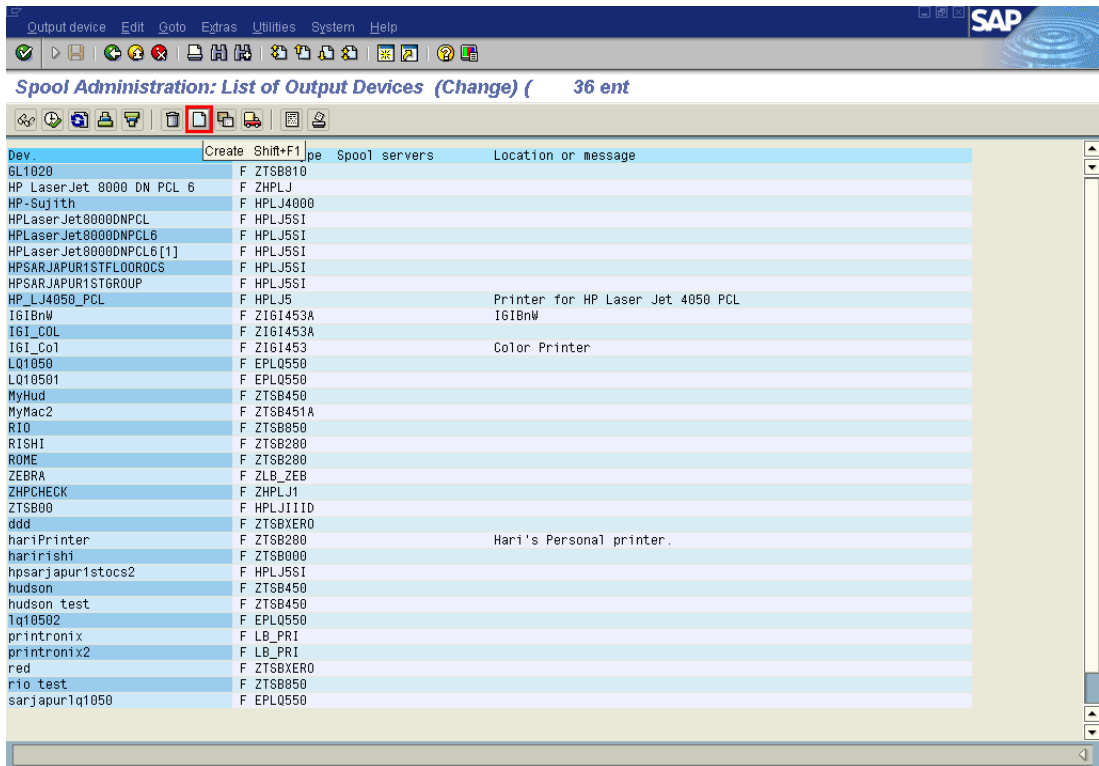
In the initial screen of SAP, type the transaction code "SPAD" in the command window and press "Enter", the following screen is displayed.



© Copyright 2005 SAP AG, All rights reserved.

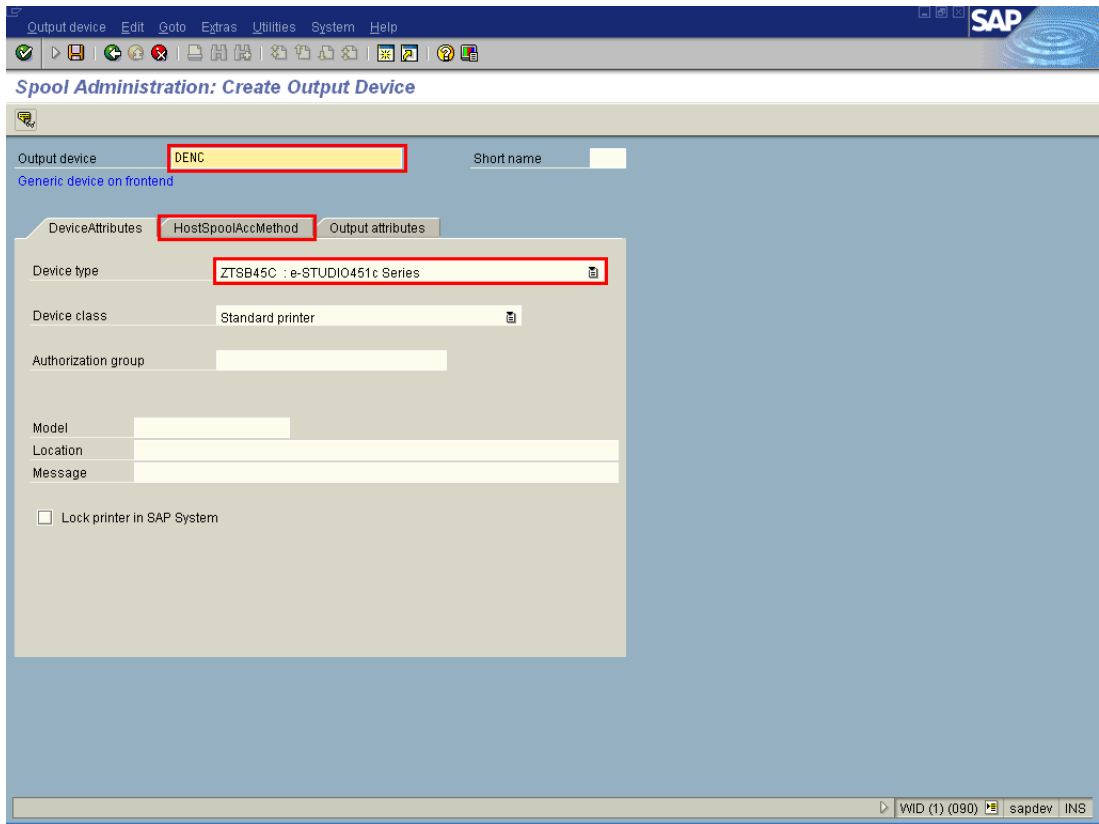
Click on the **"Output devices"** and the following screen is displayed.

5. Creation of Output Device (Cont.)



© Copyright 2005 SAP AG, All rights reserved.

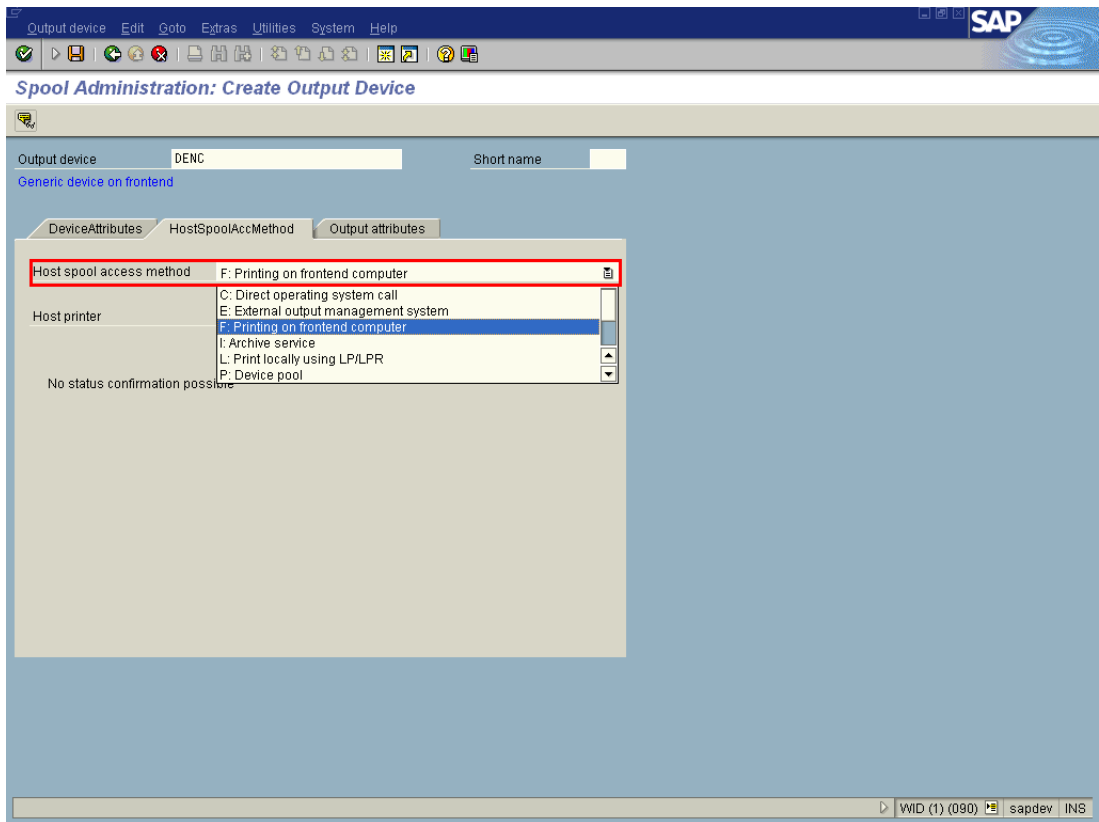
Press on the **"Create"** button, the following screen will be displayed.

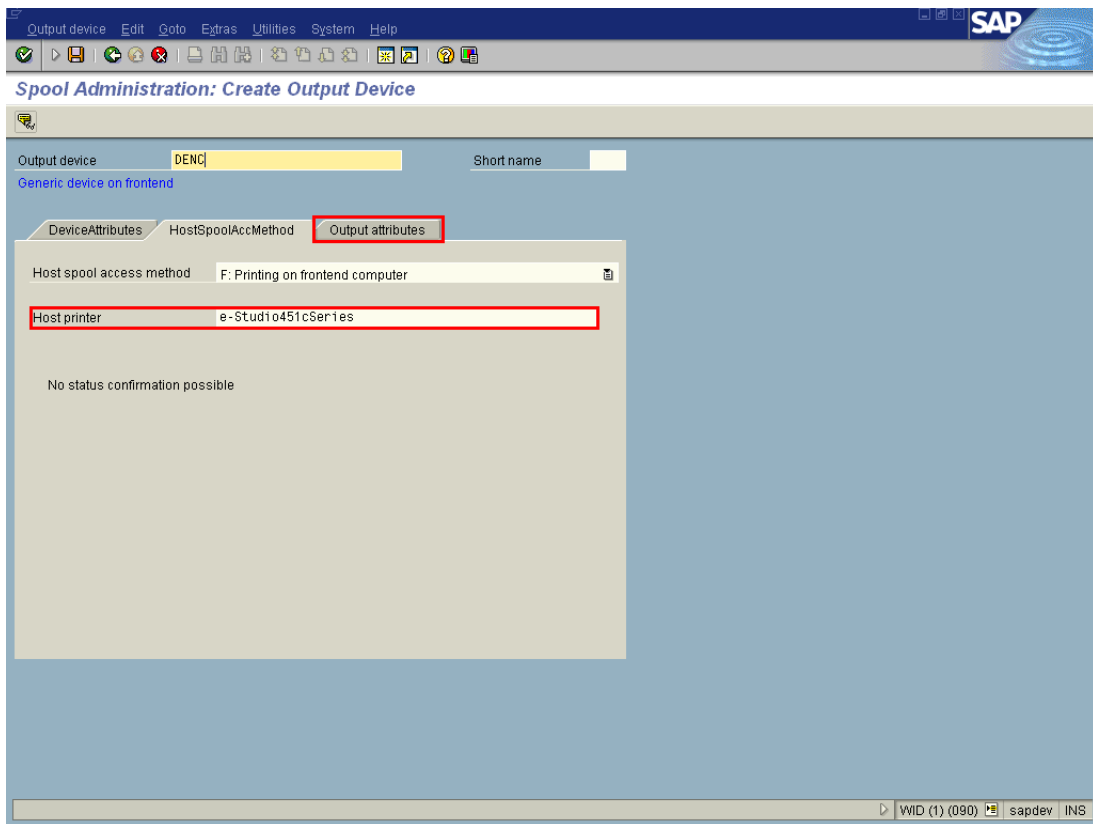


© Copyright 2005 SAP AG, All rights reserved.

Enter the printer name (**DENC** in the above mentioned example)
Associate output device **ZTSB45C: e-STUDIO451c** Series device type.
Make sure Device class is "Standard printer".
Click "**HostSpoolAccMethod**" to visit next part of output device configuration as shown in following screen.

Subsequently choose the appropriate **"Host spool access method"** in the screen displayed below. Here it is selected as **"F"**.

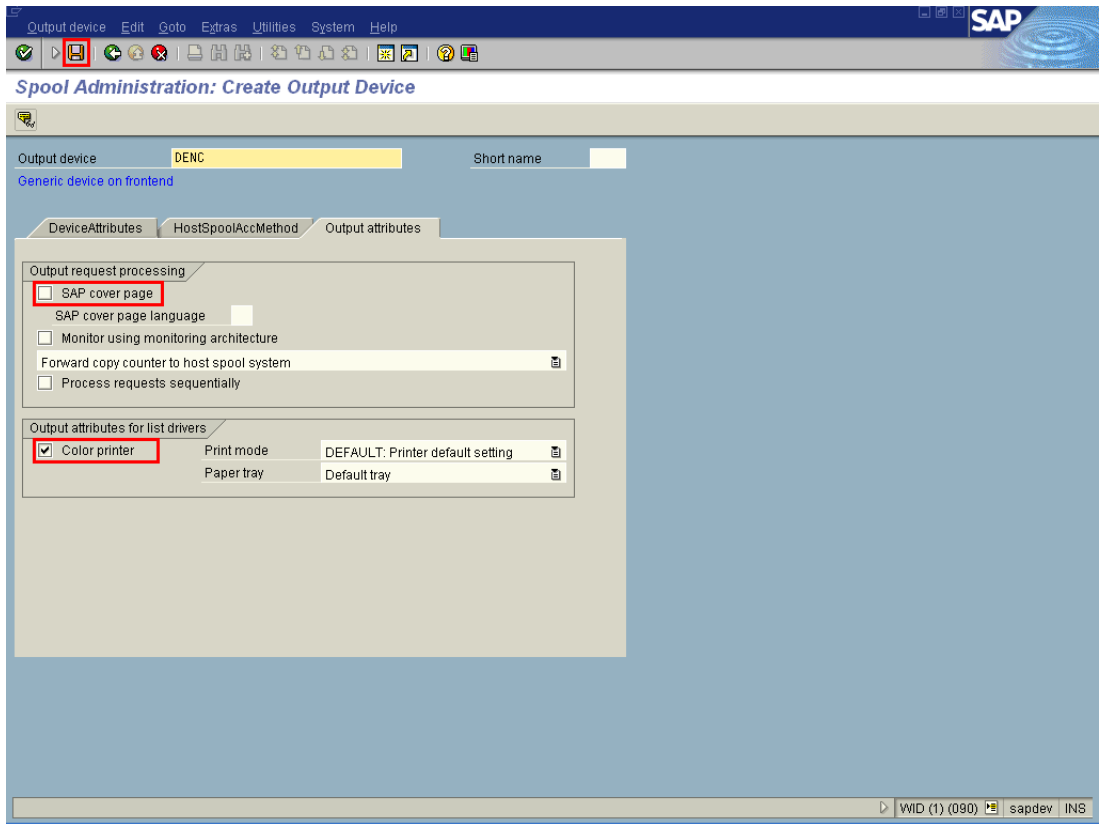




© Copyright 2005 SAP AG, All rights reserved.

Enter the **Host printer** name e-Studio451cSeries.

Click on **Output attributes** to visit, next part of output device configuration.



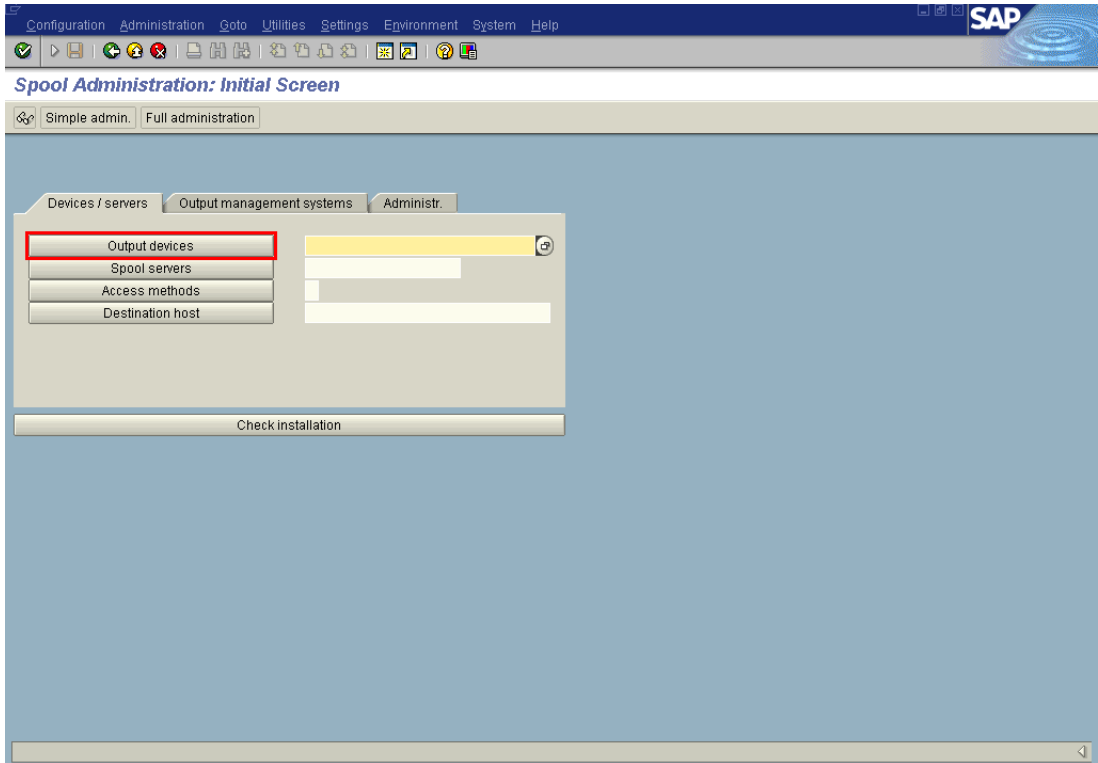
© Copyright 2005 SAP AG, All rights reserved.

(Optional), Administrator can enable printer for printing **cover page** by checking this check box.
If color printing is desired, then check "**Color printer**".
Press "**SAVE**" and the Output device will be created.

6. Verification of Output Device

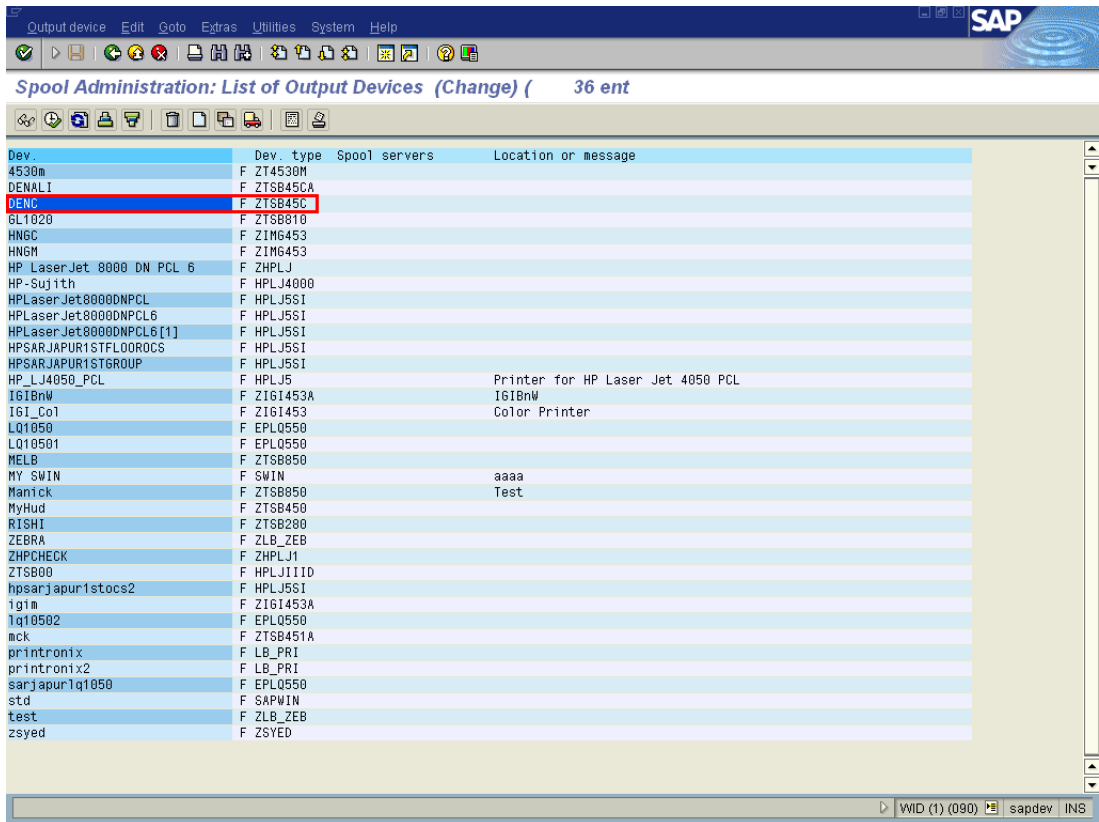
Once the output device is created, it needs to be verified whether the newly created output device appears in the standard list of all output device in SAP R/3 or not. To verify this same, follow the steps given below.

In the initial screen of SAP, type the transaction code "SPAD" in the command window and press "Enter", the following screen is displayed.



© Copyright 2005 SAP AG, All rights reserved.

Click on the **Output devices** to get list of all output device configured on the SAP/R3 system. Newly created output device **DENC** should appear in this list.



Dev.	Dev. type	Spool servers	Location or message
4530m	F	ZT4530M	
DENAL1	F	ZTSB45CA	
DENC	F	ZTSB45C	
6L1020	F	ZTSB810	
HNGC	F	ZIM6453	
HNGM	F	ZIM6453	
HP_LaserJet_8000_DN_PCL_6	F	ZHPLJ	
HP-Sujith	F	HPLJ4000	
HPLaserJet8000DNPCl	F	HPLJ561	
HPLaserJet8000DNPCl6	F	HPLJ561	
HPLaserJet8000DNPCl6[1]	F	HPLJ561	
HPSARJAPUR1STFLOORCS	F	HPLJ561	
HPSARJAPUR1STGROUP	F	HPLJ561	
HP_LJ4050_PCL	F	HPLJ5	Printer for HP Laser Jet 4050 PCL
I61Bnw	F	ZI61453A	I61Bnw
I61_Co1	F	ZI61453	Color Printer
LQ1050	F	EPLQ550	
LQ10501	F	EPLQ550	
MELB	F	ZTSB050	
MY_SWIN	F	SWIN	aaaa
Manick	F	ZTSB050	Test
MyHud	F	ZTSB450	
RISHI	F	ZTSB200	
ZEBRA	F	ZLB_ZEB	
ZHPCHECK	F	ZHPLJ1	
ZTSB00	F	HPLJ111D	
hpsarjapur1stocs2	F	HPLJ561	
lg1m	F	ZI61453A	
lq10502	F	EPLQ550	
mck	F	ZTSB451A	
printronix	F	LB_PRI	
printronix2	F	LB_PRI	
sarjapur1q1050	F	EPLQ550	
std	F	SAPWIN	
test	F	ZLB_ZEB	
zsyed	F	ZSYED	

© Copyright 2005 SAP AG, All rights reserved.

Newly created output device **DENC** should appears in the list. If newly created output device (NEW) is now displayed in the list, repeat the process of creating output device.

7. Specific Features and Configuration

7.1 Pure black and Pure gray mode Selection

Following PJL would be used to achieve vaNewus pure black and pure gray mode selection:

```
Pure black mode OFF
    @PJL COMMENT DSSC PRINT PUREGRAY=0
    @PJL COMMENT DSSC PRINT PUREBLACK=0
Pure black mode ON
    @PJL COMMENT DSSC PRINT PUREGRAY=0
    @PJL COMMENT DSSC PRINT PUREBLACK=1
Pure gray mode ON
    @PJL COMMENT DSSC PRINT PUREGRAY=1
    @PJL COMMENT DSSC PRINT PUREBLACK=0
```

7.2 Image Quality Type Selection

Following PJL would be used to achieve vaNewus Image quality type selection:

```
Normal quality output
    @PJL COMMENT DSSC PRINT DOCUMENTTYPE=NORMAL
Photograph quality output
    @PJL COMMENT DSSC PRINT DOCUMENTTYPE=PHOTO
Presentation quality output
    @PJL COMMENT DSSC PRINT DOCUMENTTYPE=PRESEN
Line art quality output
    @PJL COMMENT DSSC PRINT DOCUMENTTYPE=LINEART
```

7.3 Halftone Type Selection

Following PJL would be used to achieve vaNewus halftone type selection:

```
Halftone auto output
    @PJL COMMENT DSSC PRINT SCREENTYPE=AUTO
Halftone detail output
    @PJL COMMENT DSSC PRINT SCREENTYPE=DETAIL
Halftone smooth output
    @PJL COMMENT DSSC PRINT SCREENTYPE=SMOOTH
```

7.4 Black over print mode Selection

Following PJL would be used to achieve vaNewus black over print mode selection:

```
Black over print mode OFF
    @PJL COMMENT DSSC PRINT BLACKOVERPRINT=0
Black over print mode ON
    @PJL COMMENT DSSC PRINT BLACKOVERPRINT=1
```


MULTIFUNCTIONAL DIGITAL SYSTEMS
SAP R/3 Printing Device Type File Installation Guide

e-STUDIO281c/351c/451c

TOSHIBA TEC CORPORATION

2-17-2, HIGASHIGOTANDA, SHINAGAWA-KU, TOKYO, 141-8664, JAPAN