

MULTIFUNCTIONAL DIGITAL SYSTEMS

Software Installation Guide

e-STUDIO2802A/2802AM/2802AF

e-STUDIO2309A/2809A

Preface




Thank you for purchasing TOSHIBA Multifunctional Digital Systems. This manual explains how to install client software. Read this manual before use. Keep this manual within easy reach, and use it to configure an environment that makes best use of the e-STUDIO's functions.

■ How to read this manual



□ Symbols in this manual

To ensure correct and safe use of this equipment, this manual describes safety precautions according to the three levels shown below.

You should fully understand the meaning and importance of these items before reading this manual.

-  **WARNING** Indicates a potentially hazardous situation which, if not avoided, could result in death, serious injury, or serious damage, or fire in the equipment or surrounding objects.
-  **CAUTION** Indicates a potentially hazardous situation which, if not avoided, may result in minor or moderate injury, partial damage to the equipment or surrounding objects, or loss of data.
-  **Note** Indicates information to which you should pay attention when operating the equipment.

Other than the above, this manual also describes information that may be useful for the operation of this equipment with the following signage:

-  **Tip** Describes handy information that is useful to know when operating the equipment.
-  Pages describing items related to what you are currently doing. See these pages as required.

□ Screens and Operation Procedures

In this manual, the screens and the operation procedures in Windows are described for Windows 7. The details on the screens may differ depending on how the equipment is used, such as the status of the installed options, the OS version and the applications.

□ Trademarks

- The official name of Windows Vista® is Microsoft Windows Vista Operating System.
- The official name of Windows® 7 is Microsoft Windows 7 Operating System.
- The official name of Windows® 8 is Microsoft Windows 8 Operating System.
- The official name of Windows Server® 2008 is Microsoft Windows Server 2008 Operating System.
- The official name of Windows Server® 2012 is Microsoft Windows Server 2012 Operating System.
- Microsoft, Windows, and the brand names and product names of other Microsoft products are trademarks of Microsoft Corporation in the US and other countries.
- Apple, Macintosh, Mac, Mac OS, Safari, and TrueType are trademarks of Apple Inc.
- Adobe®, Acrobat®, Reader, and PostScript® are trademarks of Adobe Systems Incorporated.
- Mozilla®, Firefox® and the Firefox logo® are trademarks or registered trademarks of Mozilla Foundation in the U.S. and other countries.
- e-STUDIO, e-BRIDGE, and TopAccess are trademarks of Toshiba Tec Corporation.
- Other company and product names given in this manual or displayed in this software may be the trademarks of their respective companies.

END USER SOFTWARE LICENSE AGREEMENT

INSTALLING OR OTHERWISE USING THIS SOFTWARE PRODUCT CONSTITUTES YOUR ACCEPTANCE OF THE FOLLOWING TERMS AND CONDITIONS (UNLESS A SEPARATE LICENSE IS PROVIDED BY THE SUPPLIER OF APPLICABLE SOFTWARE IN WHICH CASE SUCH SEPARATE LICENSE SHALL APPLY). IF YOU DO NOT ACCEPT THESE TERMS, YOU MAY NOT INSTALL OR USE THIS SOFTWARE, AND YOU MUST PROMPTLY RETURN THE SOFTWARE TO THE LOCATION WHERE YOU OBTAINED IT.

GRANT OF LICENSE:

This is a legal agreement between you, the end-user ("You"), and TOSHIBA TEC Corporation ("TTEC"). This software, fonts (including their typefaces) and related documentation ("Software") is licensed for use with TTEC MFP on which it was installed to the designated device you use ("System") in accordance with the terms contained in this License Agreement. The copyright and other intellectual property rights, title and ownership of Software is proprietary and belonging to TTEC and its suppliers. TTEC disclaim responsibility for the installation and/or use of Software, and for the results obtained by using Software. You may use one copy of Software as installed on a single System, and may not copy Software for any reason except as necessary to use Software on a single System. Any copies of Software shall be subject to the conditions of this License Agreement. You may not, nor cause or permit any third party to, modify, adapt, merge, translate, reverse compile, reverse assemble, or reverse engineer Software. You may not use Software, except in accordance with this license. No title to the intellectual property in Software is transferred to you and full ownership is retained by TTEC and its suppliers. Source code of Software is not licensed to you. You may not perform modification, deletion, etc to the copyright notice of Software (including in duplicate). You will be held legally responsible for any copyright infringement, unauthorized transfer, reproduction or use of Software.

TERM:

This license is effective until terminated by TTEC or upon your failure to comply with any term of this License Agreement. Upon termination, you agree to destroy all copies of Software. You may terminate this license at any time by destroying Software and all copies.

DISCLAIMER OF WARRANTY:

Software is provided "AS IS" without warranty of any kind, either express or implied, including, but not limited to, the implied warranties of merchantability, fitness for a particular purpose, title, and non-infringement. TTEC disclaims any warranty relating to the quality and performance of Software. If Software proves defective, You (and not TTEC) shall be responsible for the entire cost of all necessary servicing, repair or correction. TTEC does not warrant that the functions contained in Software will meet your requirements or that the operation of Software will be uninterrupted or error free.

UPDATE AND DISCONTINUE:

TTEC may update, upgrade and discontinue Software without any restriction.

THIRD PARTY SOFTWARE:

There are cases in which third party software is contained in Software (including future updated and upgraded versions). Such third party software is provided to you on different terms from those of this License Agreement, in the form of term stated in the License Agreement with the suppliers or the readme files (or files similar to readme files) separately from this License Agreement ("Separate Agreements, etc."). When you use the third party software, you must comply with the term of the third party software stated in the Separate Agreements, etc. Except the term of the third party software, you must comply with the term stated in this License Agreement.

LIMITATION OF LIABILITY:

IN NO EVENT WILL TTEC BE LIABLE TO YOU FOR ANY DAMAGES, WHETHER IN CONTRACT, TORT, OR OTHERWISE (except personal injury or death resulting from negligence on the part of TTEC), INCLUDING WITHOUT LIMITATION ANY LOST PROFITS, LOST DATA, LOST SAVINGS OR OTHER INCIDENTAL, SPECIAL OR CONSEQUENTIAL DAMAGES ARISING OUT OF THE USE OR INABILITY TO USE SOFTWARE, EVEN IF TTEC OR ITS SUPPLIERS HAVE BEEN ADVISED OF THE POSSIBILITY OF SUCH DAMAGES, NOR FOR THIRD PARTY CLAIMS.

U.S. GOVERNMENT RESTRICTED RIGHTS:

The Software is provided with RESTRICTED RIGHTS. Use, duplication or disclosure by the U.S. Government is subject to restrictions set forth in subdivision (b)(3)(ii) or (c)(i)(ii) of the Rights in Technical Data and Computer Software Clause set forth in 252.227-7013, or 52.227-19 (c)(2) of the DOD FAR, as appropriate.

GENERAL:

You may not sublicense, lease, rent, assign or transfer this license or Software. Any attempt to sublicense, lease, rent, assign or transfer any of the rights, duties or obligations hereunder is void. You agree that you do not intend to, and will not ship, transmit, export or re-export (directly or indirectly) Software, including any copies of Software, or any technical information contained in Software or its media, or any direct product thereof, to any country or destination prohibited by government of Japan, the United States and the relevant country. This license shall be governed by the laws of Japan or, at the election of a Supplier of TTEC concerned with a dispute arising from or relating to this Agreement, the laws of the Country designated from time to time by the relevant Supplier of TTEC. If any provision or portion of this License Agreement shall be found to be illegal, invalid or unenforceable, the remaining provisions or portions shall remain in full force and effect.

YOU ACKNOWLEDGE THAT YOU HAVE READ THIS LICENSE AGREEMENT AND THAT YOU UNDERSTAND ITS PROVISIONS. YOU AGREE TO BE BOUND BY ITS TERMS AND CONDITIONS. YOU FURTHER AGREE THAT THIS LICENSE AGREEMENT CONTAINS THE COMPLETE AND EXCLUSIVE AGREEMENT BETWEEN YOU AND TTEC AND ITS SUPPLIERS AND SUPERSEDES ANY PROPOSAL OR PRIOR AGREEMENT, ORAL OR WRITTEN, OR ANY OTHER COMMUNICATION RELATING TO THE SUBJECT MATTER OF THIS LICENSE AGREEMENT.

Contractor/Manufacturer is TOSHIBA TEC Corporation, 1-11-1, Osaki, Shinagawa-ku, Tokyo, 141-8562, Japan

CONTENTS

Preface.....	1
END USER SOFTWARE LICENSE AGREEMENT	2

Chapter 1 BEFORE INSTALLATION

Before Installing the Software in Windows	8
Software on the Client Utilities/User Documentation DVD*	8
System requirements.....	8
Before Installing the Software in Mac OS X	9
About the PPD file	9
System requirements.....	9
Before Installing the Software in UNIX/Linux	10
About CUPS	10
System requirements.....	10
Connection Environment	11
USB connection.....	11
Network connection.....	12

Chapter 2 INSTALLATION IN WINDOWS

Installing the Drivers in Windows	14
Installing the drivers using the installer.....	14
Installing the drivers using Plug and Play.....	17
Uninstalling the Drivers from Windows	20
Uninstalling the printer/scanner driver	20
Uninstalling e-STUDIO Scan Editor.....	21
Uninstalling the N/W-Fax driver.....	23

Chapter 3 INSTALLATION IN MAC OS X

Installing the Printer in Mac OS X	26
Installing the PPD file	26
Configuring the printer.....	29
Uninstalling the Printer from Mac OS X	34

Chapter 4 INSTALLATION IN UNIX/Linux

Configuring the Printer Using CUPS	36
Configuring the printer for LPR printing.....	36
Configuring the printer for IPP printing	37
Configuring the printer for USB printing.....	38
Configuring the print options.....	39
Uninstalling the Printer from UNIX/Linux	41

INDEX	43
--------------------	-----------

1





BEFORE INSTALLATION

Before you start the installation, refer to the following pages according to the operating system that you use.

Before Installing the Software in Windows	8
Software on the Client Utilities/User Documentation DVD*	8
System requirements.....	8
Before Installing the Software in Mac OS X	9
About the PPD file	9
System requirements.....	9
Before Installing the Software in UNIX/Linux	10
About CUPS	10
System requirements.....	10
Connection Environment	11
USB connection.....	11
Network connection	12

Before Installing the Software in Windows

Refer to the following pages to install the software in Windows:

-  P.8 “Software on the Client Utilities/User Documentation DVD*”
-  P.8 “System requirements”
-  P.11 “Connection Environment”
-  P.14 “Installing the Drivers in Windows”

■ Software on the Client Utilities/User Documentation DVD*

* The Client Utilities DVD is available for e-STUDIO2802A/2802AM/2802AF.

- **Printer driver**

Allows you to use this equipment as a printer when it is connected to a Windows computer.

- PCL6 Printer 2 driver - You can use this depending on the purposes of the applications in various usages.
- PS3 printer driver* - This printer driver is suitable for printing from a general application, such as a DTP application supporting PostScript.
- XPS printer driver - This printer driver is suitable for printing from a Windows Presentation Foundation (WPF) application.

* To use the PS3 printer driver, the PostScript Kit option needs to be installed in the equipment.

- **Scanner driver**

Allows you to scan the originals set in this equipment remotely from your Windows computer and send the image to a TWAIN-compliant application.

- **e-STUDIO Scan Editor**

Allows you to scan the original set in this equipment from your Windows computer and edit the scanned images simply.

- **N/W Fax driver**

Allows you to send electronic documents from your Windows computer to one or more destinations.

Tip

The N/W-Fax driver is not available for e-STUDIO2802A and e-STUDIO2802AM.

■ System requirements

- **CPU**

1 GHz minimum (1 GHz or faster recommended)

- **Memory**

32-bit processor

- 1 GB (2 GB recommended)

64-bit processor

- 2 GB (4 GB recommended)

- **Interface**

USB 2.0 (Hi-Speed)

- **OS**

Windows Vista SP2

Windows 7 SP1

Windows 8/8.1

Windows Server 2008 SP2





Windows Server 2008 R2 SP1

Windows Server 2012

Windows Server 2012 R2

Before Installing the Software in Mac OS X

Refer to following pages to install the software and configure the printer in Mac OS X:

-  P.9 “About the PPD file”
-  P.9 “System requirements”
-  P.11 “Connection Environment”
-  P.26 “Installing the Printer in Mac OS X”

■ About the PPD file

You need to install an exclusive PPD file (PostScript Printer Description file) in Mac OS X to print with the equipment. This file contains information about controller-specific features of the equipment.

■ System requirements

To install the PPD file in Mac OS X and print with the equipment, the following environment is required.

- **CPU**
1 GHz minimum (1 GHz or faster recommended)
- **Memory**
32-bit processor
 - 2 GB64-bit processor
 - 2 GB (4 GB recommended)
- **Display resolution**
1028 x 768 dots or more
- **OS**
Mac OS X 10.6.x to Mac OS X 10.10.x
- **Protocol**
TCP/IP

Before Installing the Software in UNIX/Linux

Refer to following pages to install the software and configure the printer in UNIX/Linux:

📖 P.10 “About CUPS”

📖 P.10 “System requirements”

📖 P.11 “Connection Environment”

📖 P.36 “Configuring the Printer Using CUPS”

■ About CUPS

When you configure the printer in UNIX/Linux using CUPS, you can use LPR printing or IPP printing. This guide describes the behavior, options, and installation method of the CUPS printer driver for the equipment. The behavior of the printer driver presented in this manual is consistent with CUPS v1.2.4. The driver may appear and/or operate slightly differently in different versions. In the CUPS environment, you use a PostScript Printer Description (PPD) file, not a printer driver to configure the printing. The PPD file is included in this package.

■ System requirements

Development Environment

The supported UNIX/Linux environment is as follows.

OS:

Redhat Enterprise 5.10.x, 6.5.x

Fedora Ver.19

Open SuSE Ver.11.3

Bharat Operating System 5.x

CUPS:

1.2.4

Implementation Method

This driver consists of a PPD file that works in conjunction with an interface like XPP, KPrinter, etc. It can also be used on OSX in the same way that it is used on Linux, but this is not recommended.

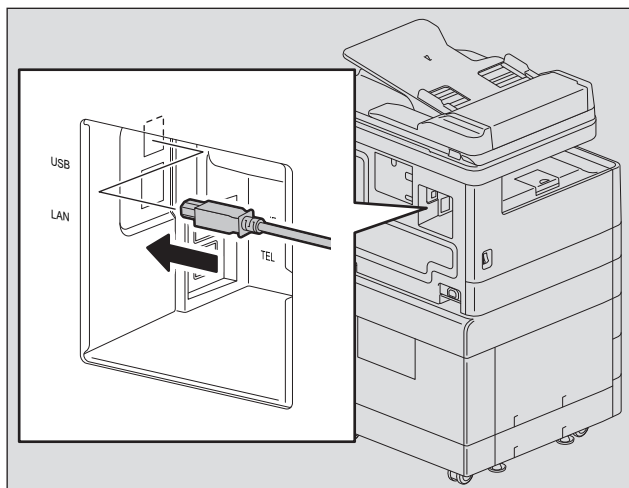
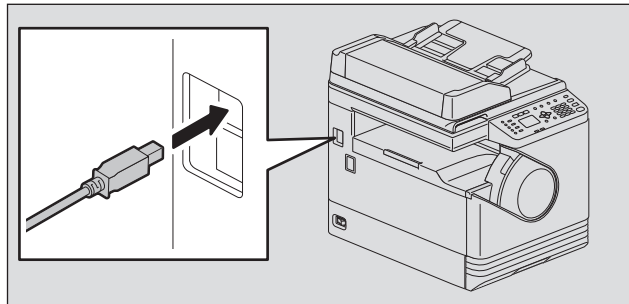
Connection Environment

A USB connection or network connection is available.

1

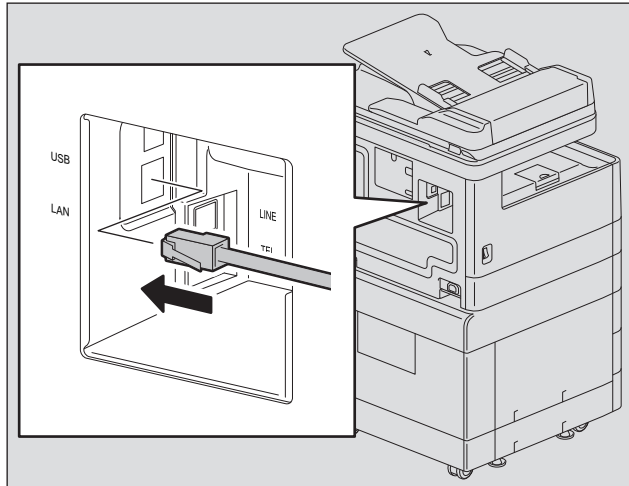
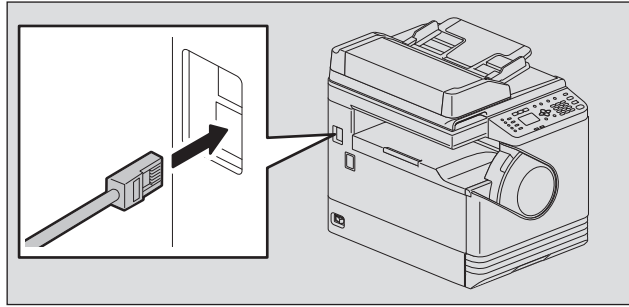
■ USB connection

Before installing the drivers, connect the equipment and the computer with a USB cable, and turn on the equipment.



■ Network connection

Before installing the drivers, connect the equipment to the network, and then turn on the equipment.



INSTALLATION IN WINDOWS


This chapter explains the installation in Windows.

Installing the Drivers in Windows	14
Installing the drivers using the installer.....	14
Installing the drivers using Plug and Play.....	17
Uninstalling the Drivers from Windows	20
Uninstalling the printer/scanner driver	20
Uninstalling e-STUDIO Scan Editor.....	21
Uninstalling the N/W-Fax driver.....	23

Installing the Drivers in Windows


This section describes how to install the printer, scanner, and N/W Fax drivers in Windows. Installing the drivers requires the administrator authority.

Install the drivers using the installer or the Windows Plug and Play function.

 P.14 "Installing the drivers using the installer"

 P.17 "Installing the drivers using Plug and Play"

Notes

- Close any running software, such as an antivirus program, before installing the drivers.
- For Windows 7, Windows 8, Windows Server 2008 R2, or Windows Server 2012, use the installer to install the drivers. The Windows Plug and Play function cannot install them.
 P.14 "Installing the drivers using the installer"
- When you are using Windows Server 2008 or Windows Server 2012, install [Desktop Experience] from [Server Manager] of [Administrative Tools] before you install the scanner driver.

■ Installing the drivers using the installer

1 Make sure that the equipment is turned on.

2 Insert the Client Utilities/User Documentation DVD* into your computer.

* The Client Utilities DVD is available for e-STUDIO2802A/2802AM/2802AF.

- The installer automatically starts and opens the installation dialog box.
- If the installer does not automatically start, open the "Drivers" folder and double-click "Setup.exe" in the DVD.

3 Select "I accept the terms of the license agreement" and click [Next].

4 Select [USB Connection] or [Network Connection], and then click [Next].

5 Make sure that the equipment has been connected to the computer or the network and click [Next].

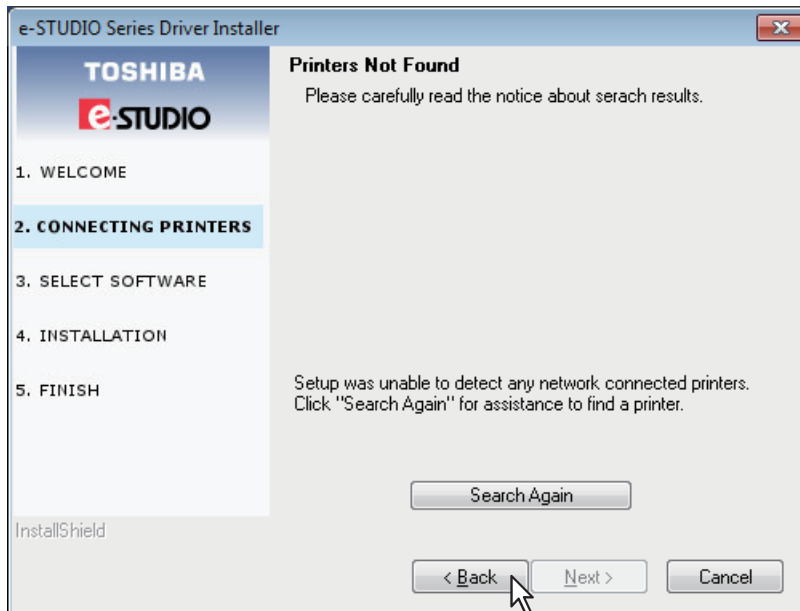
If you have selected [USB Connection] at the previous step, proceed to step 7.

6 Check the detected printer, select the model and click [Next].

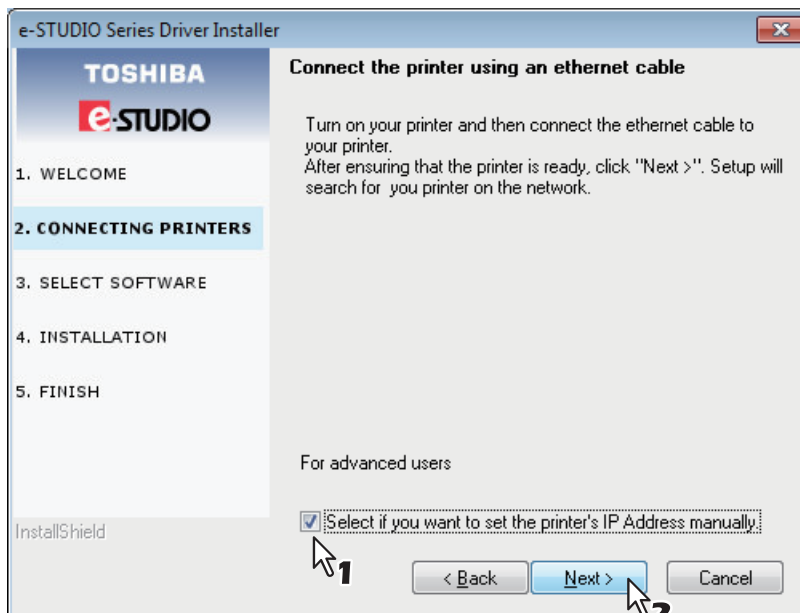
Note

If the equipment is not discovered over the network, specify the IP address manually following the steps below. For the IP address of the equipment, refer to *User's Guide* "Chapter 6: VARIOUS FUNCTIONS - Network Menu List - Setting the TCP/IP protocol".

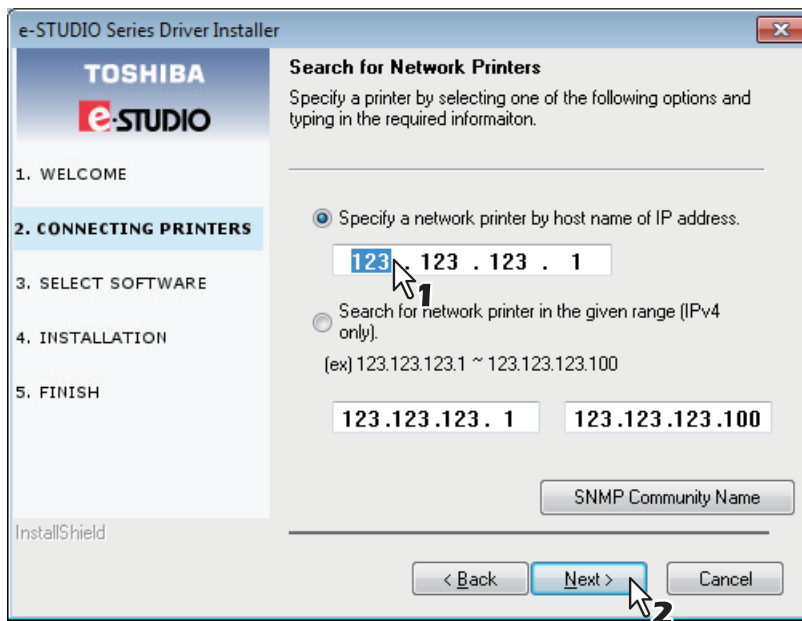
1. Click [Back].



2. Select [Select if you want to set the printer's IP Address manually.], and then click [Next].



3. Enter the IP address of the equipment under [Specify a network printer by host name of IP address.], then click [Next].



7 Check the model and the software to install and click [Next].

Note

The option to select the model name is not displayed depending on the model used.

8 Click [Finish] when the installation is complete.

To install e-STUDIO Scan Editor, open the [Application] - [e-STUDIO Scan Editor] folders, double-click "eSScanSetup.exe", and follow the instructions that appear on the screen. After the installation, remove the DVD from the computer.

Tip


The Installer may ask you to restart your computer. If it does, select "Yes, I want to restart my computer now." to restart your computer.

■ Installing the drivers using Plug and Play

You can use the Windows Plug and Play function to install the drivers in Windows Vista / Windows Server 2008. When using Plug and Play, first the scanner driver is installed, and then the printer driver.

Note

For Windows 7, Windows 8, Windows Server 2008 R2, or Windows Server 2012, use the installer to install the drivers. The Windows Plug and Play function cannot install them.

 P.14 “Installing the drivers using the installer”

Tip

An additional printer wizard can also be used to install the printer driver. To use the additional printer wizard, select the USB port or the network port that the equipment is connected to using “Choose a Printer Port”.

1 Connect this equipment to the computer using a USB cable, and then start the computer.

Note

Do not connect or disconnect the USB cable when starting up the computer.

2 Turn on the equipment.

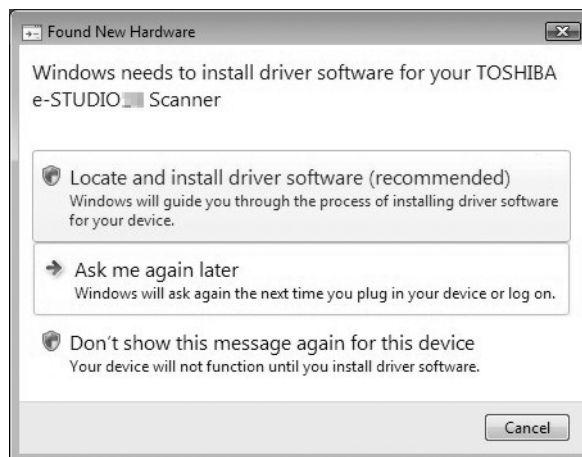
The Found New Hardware dialog box appears.

If it does not appear, turn off this equipment, and then wait approximately 10 seconds before turning it on again. If you turn this equipment on immediately after turning it off, it may not function correctly.

3 Click “Locate and install driver software (recommended)”.

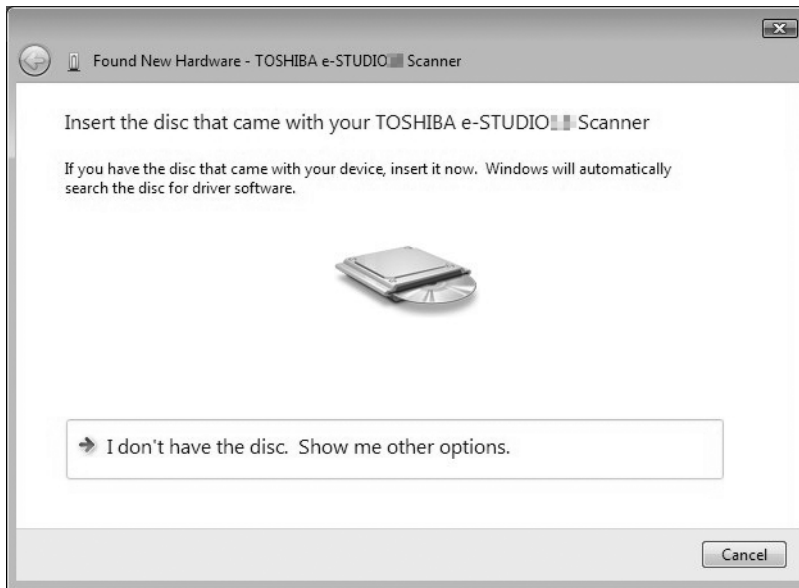
The dialog box requesting the disk (Client Utilities/User Documentation DVD*) appears.

* The Client Utilities DVD is available for e-STUDIO2802A/2802AM/2802AF.



If the User Account Control dialog box appears, click [Allow] or [Continue].

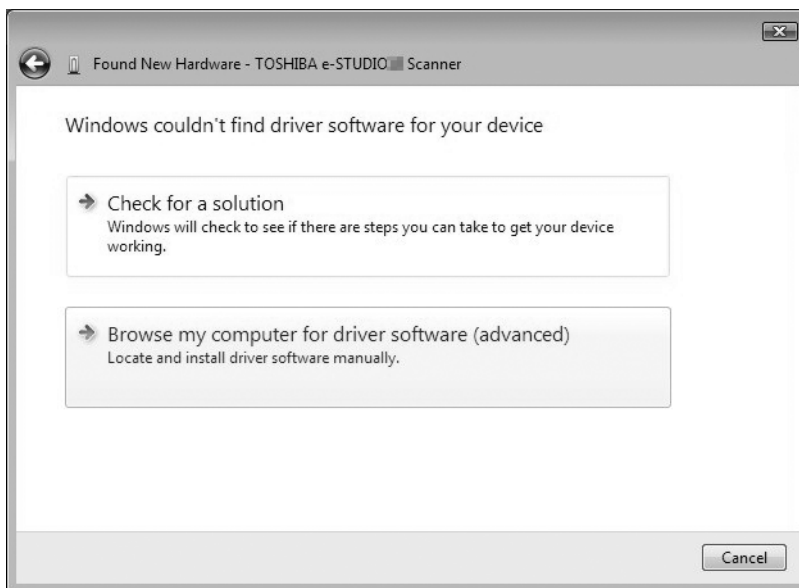
4 Click “I don't have the disc. Show me other options”.



5 Insert the Client Utilities/User Documentation DVD* into the computer.

* The Client Utilities DVD is available for e-STUDIO2802A/2802AM/2802AF.

6 Click “Browse my computer for driver software (advanced)”.



7 Select the folder on the DVD that contains the drivers, and then click [OK].

Select the folder according to the language and operating system you are using.

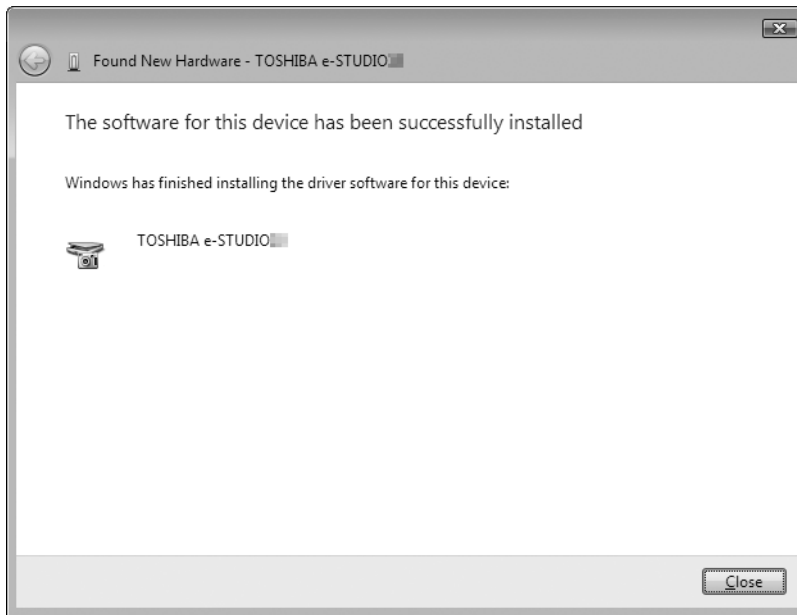
For example, for a 32-bit English OS, select “Drive name:\Drivers\e-STUDIOXXXXX\Driver\English\i386”.

8 Click [Next].

If the Windows Security dialog box appears, click [Install this driver software anyway].

Note

If a message prompting you to confirm the device software installation appears, select the option of trusting the publisher such as [Install] or [Continue Anyway] to proceed with the installation.

9 When the installation completes, click [Close].

The Found New Hardware dialog box appears again and the installation of the printer driver begins.

- 10** Repeat steps 4 through 9 to install the printer driver.
- 11** After installation, make sure the icon for the installed printer appears in the Printers window.
- 12** Remove the DVD from the computer.

Uninstalling the Drivers from Windows

This section explains how to uninstall the printer, scanner, e-STUDIO Scan Editor, and N/W Fax drivers. Uninstalling the drivers requires the administrator authority.

■ Uninstalling the printer/scanner driver

The following instructions describe how to uninstall a printer driver or a scanner driver.

Notes

- To perform uninstallation, you must log onto Windows with the “Administrator” account. However, even if you have logged on with a user account other than “Administrator”, entering an administrator password upon display of the [User Account Control] dialog box enables you to perform the uninstallation by temporarily changing the user account.
- Even when you have logged on Windows with the “Administrator” account, the [User Account Control] dialog box may appear. In this case, click a button for allowing the operation, such as [Continue], and then continue.

1 Make sure that the equipment is turned on.

2 Insert the Client Utilities/User Documentation DVD* into your computer.

* The Client Utilities DVD is available for e-STUDIO2802A/2802AM/2802AF.

- The installer automatically starts and opens the installation dialog box.
- If the installer does not automatically start, open the “Drivers” folder and double-click “Setup.exe” in the DVD.

3 Select “I accept the terms of the license agreement” and click [Next].

4 Uncheck the software to uninstall and click [Next].

5 Click [Finish] when the uninstallation is complete.

■ Uninstalling e-STUDIO Scan Editor

The following describes how to uninstall e-STUDIO Scan Editor from Windows Vista / Windows 7 / Windows 8 / Windows Server 2008/ Windows Server 2012.

Note

To perform uninstallation, you must log onto Windows with the “Administrator” account; this enables the installation and uninstallation of client software. However, if you have logged onto Windows Vista / Windows 7 / Windows 8 / Windows Server 2008 / Windows Server 2012 with a user account other than “Administrator”, entering an administrator password upon display of the [User Account Control] dialog box enables you to perform the uninstallation by temporarily changing the user account.

1 Click the Start button, select [Control Panel] and click [Uninstall a program].



The [Uninstall or change a program] dialog box appears.

Tip

For instructions on how to access the [Uninstall or change a program] screen on Windows 8 / Windows Server 2012, see the following instructions.

📖 P.22 “Accessing the [Uninstall or change a program] screen on Windows 8 / Windows Server 2012”

2 From the list, select [e-STUDIO Scan Editor] and click [Uninstall].

3 Click [Yes].

4 Click [Yes] to delete the setting files.

Deleting files starts.

Note

If you want to reinstall the client software later, click [No] to have the setting files remain. You can restore the data and settings when you reinstall the client software.

□ Accessing the [Uninstall or change a program] screen on Windows 8 / Windows Server 2012

Follow the steps below to access the [Uninstall or change a program] screen on Windows 8 / Windows Server 2012.

Tip

When you uninstall the printer driver or the N/W-Fax driver, open [Devices and Printers] at step 4.

- 1 Move the cursor to the upper right corner or lower right corner of the computer screen, and then select [Start] in the menu that appears.**



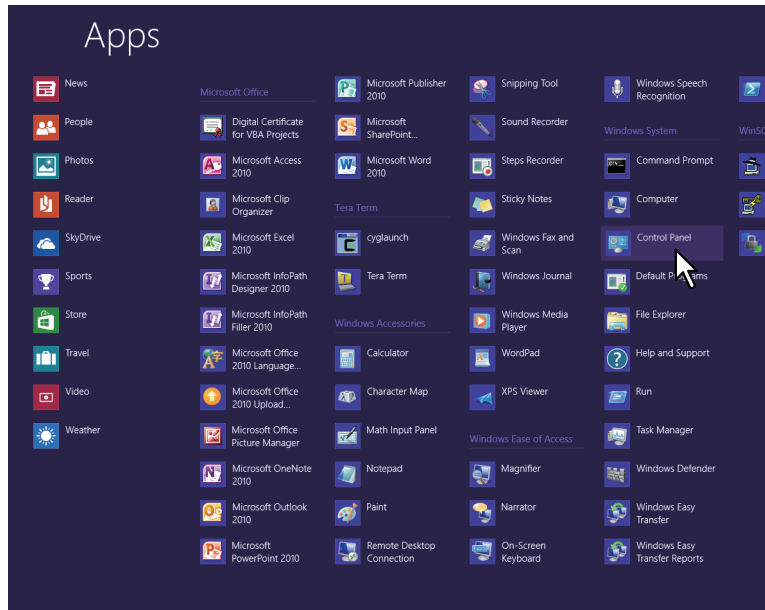
The [Start] screen appears.

- 2 Right-click in the blank area in the [Start] screen, and then click [All apps] that appears.**



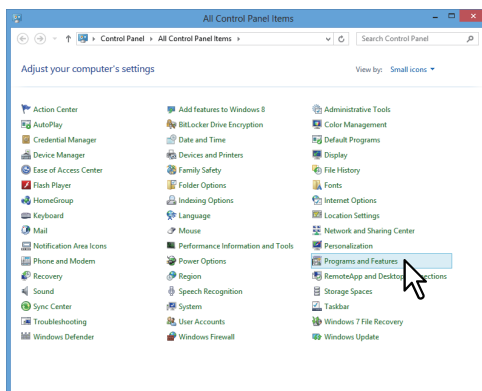
The [Apps] screen appears.

3 Click [Control Panel].



The [All Control Panel Items] screen appears.

4 Click [Programs and Features].



The [Uninstall or change a program] screen appears.

■ Uninstalling the N/W-Fax driver

When you use e-STUDIO2309A/2809A with the optional fax unit installed or e-STUDIO2802AF with the standard fax unit installed, you can uninstall the N/W-Fax driver. Since the uninstallation procedure is the same as for printer drivers, it is omitted. When performing uninstallation, see the following page:

📖 P.20 “Uninstalling the printer/scanner driver”

INSTALLATION IN MAC OS X

This chapter explains the installation in Mac OS X.

Installing the Printer in Mac OS X	26
Installing the PPD file	26
Configuring the printer	29
Uninstalling the Printer from Mac OS X	34

Installing the Printer in Mac OS X

Refer to the following pages to install the PPD file and configure the printer in Mac OS X:

📖 P.26 “Installing the PPD file”

📖 P.29 “Configuring the printer”

■ Installing the PPD file

The following procedure explains the PPD file installation by example of the screens in Mac OS X 10.10.x.

Note

The steps and screens may differ depending on the version of Mac OS X. When you use Mac OS X 10.6.x - 10.9.x, refer to the following steps for Mac OS X 10.10.x to carry out the installation.

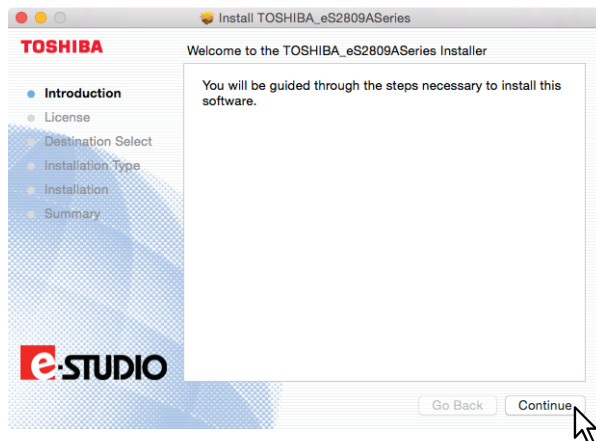
- 1 Insert the Install Disc into the disc drive.
- 2 Open the [MacPPD] folder, and then copy the ZIP file to the desktop.
- 3 Double-click the ZIP file on the desktop.
- 4 Double-click the Disk Image file.
- 5 Double-click the icon in the installer window.



Note

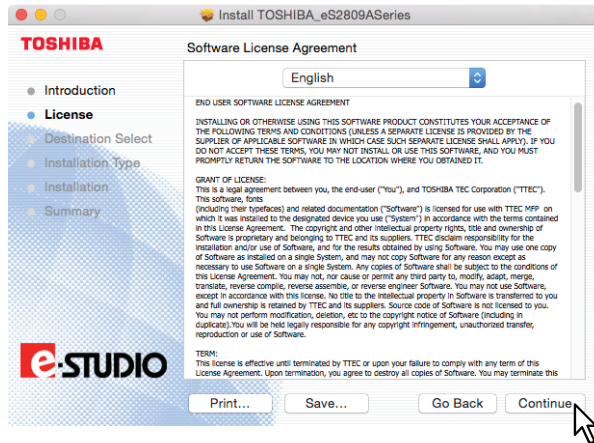
When you start up the installer, be sure that Mac OS X Printer Setup Utility is not operating. If a PPD file is installed while the Mac OS X Printer Setup Utility is operating, the printer may not be normally recognized.

- 6 Click [Continue].

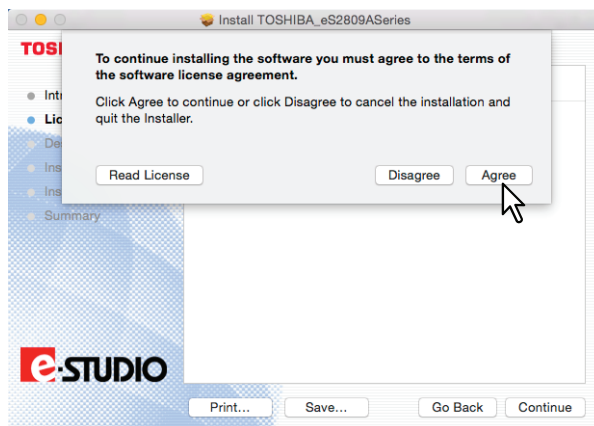


The [Software License Agreement] window is displayed.

7 Click [Continue].



8 Click [Agree].

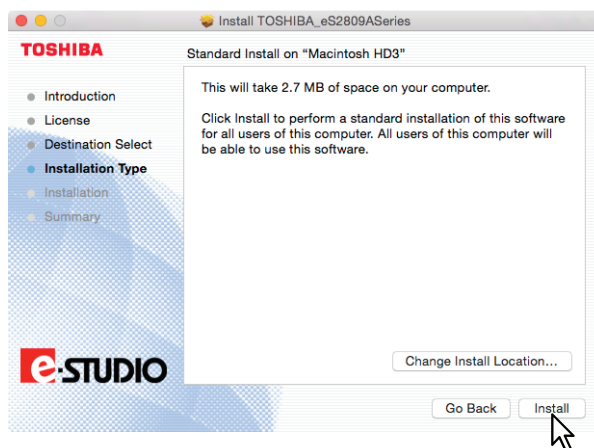


The [Standard Install] window is displayed.

Note

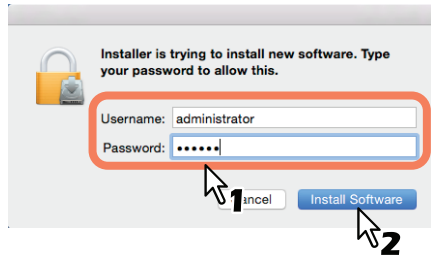
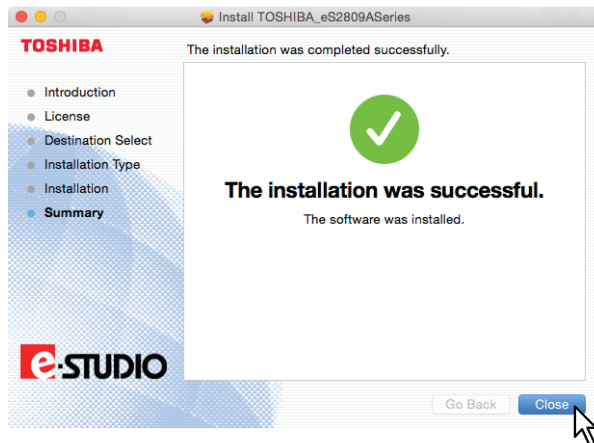
The subsequent steps may differ depending on the Mac OS version.

9 Click [Install] (or [Upgrade]).



Tip




The Select a Destination dialog box appears by clicking [Change Install Location]. Select the boot disk for Mac OS X and click [Continue].

10 Enter the name and password, and click [OK].**11** Click [Close] to close the installer window.**12** Delete the ZIP files and Installer files created on the desktop.**13** Continue the procedure for configuring the printer.

📖 P.29 "Configuring the printer"

■ Configuring the printer

After you copy the PPD file to the library folder in the System Folder, you can configure the printer. The equipment supports the following Mac OS X print services:

- **LPR printing**
 P.29 “Configuring LPR printing”
- **IPP printing**
 P.31 “Configuring IPP printing”
- **USB printing**
 P.33 “Configuring USB printing”

Tip

LPR printing and IPP printing are available when the equipment and your computer are connected over TCP/IP network.

□ Configuring LPR printing

The screens for Mac OS 10.10.x are used in this section.

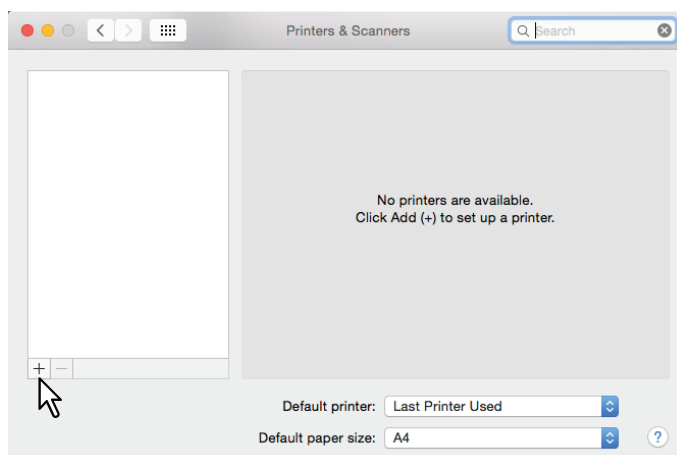
Tips

- When you use Mac OS X 10.7.x - 10.9.x, configure the printer in the same way as you do in Mac OS X 10.10.x.
- When you use Mac OS X 10.6.x, open [Print & Fax] from [System Preferences] and configure the printer referring to the procedure below.

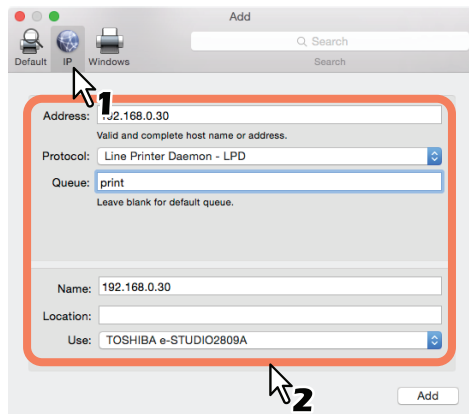
1 Open System Preferences and click [Print & Scan] (for Mac OS X 10.7.x or 10.8.x) or [Printers & Scanners] (for Mac OS X 10.9.x or 10.10.x).



2 Click [+].



3 Click [IP] and specify the items as described below.



Address: <IP address or DNS name of this equipment>
Protocol: Line Printer Daemon - LPD
Queue: print
Name: <Any Name>
Location: <Any Name>
Use: TOSHIBA e-STUDIO2309A for e-STUDIO2309A
 TOSHIBA e-STUDIO2809A for e-STUDIO2809A
 TOSHIBA e-STUDIO2802A for e-STUDIO2802A
 TOSHIBA e-STUDIO2802AM for e-STUDIO2802AM
 TOSHIBA e-STUDIO2802AF for e-STUDIO2802AF

Tips

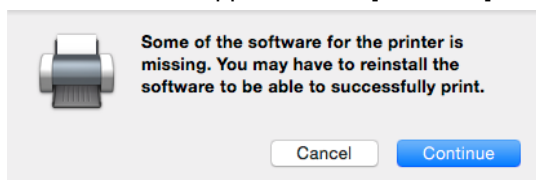
- In the [Name] box, the name that is entered in the [Address] box is automatically displayed.
- Even when you enter the IP address or DNS name of this equipment in the [Address] box, the correct name might not be selected in the [Use] box. Select [Other] in the [Use] box and select the correct PPD file for the equipment from the [Library/Printers/PPDs/Contents/Resources/en.lproj] folder.
 - EST2309A.ppd for e-STUDIO2309A
 - EST2809A.ppd for e-STUDIO2809A
 - EST2802A.ppd for e-STUDIO2802A
 - EST2802AM.ppd for e-STUDIO2802AM
 - EST2802AF.ppd for e-STUDIO2802AF

4 Click [Add].

The [Installable Options] window appears.

Tip

If the screen below appears, click [Continue] to continue the printer setup.



5 Set the following options.

For e-STUDIO2309A/2809A:

Drawer 2 — Select this when the drawer 2 is installed.

Drawer 2 and 3 — Select this when the drawer 2 and 3 are installed.

Drawer 2, 3 and 4 — Select this when the drawer 2, 3 and 4 are installed.

ADU — Select the check box to use the Automatic Duplexing Unit.

For e-STUDIO2802A/2802AM/2802AF:

ADU — Select the check box to use the Automatic Duplexing Unit.

6 Click [OK].

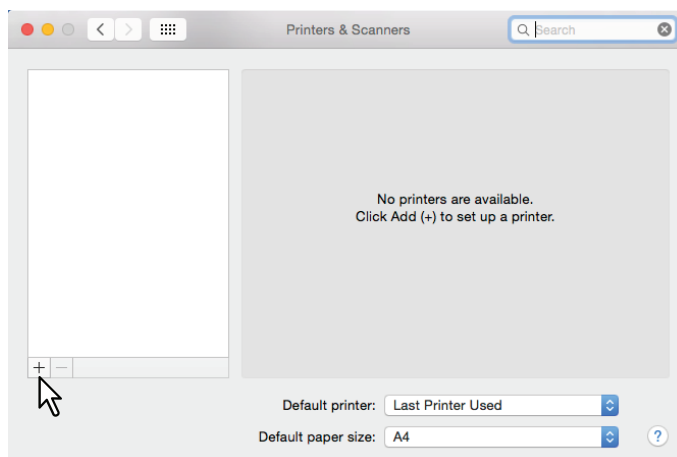
The printer is added to the Printer List.

□ Configuring IPP printing

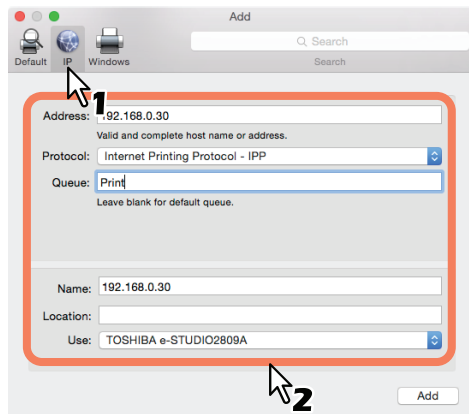
The screens for Mac OS 10.10.x are used in this section.

Tips

- When you use Mac OS X 10.7.x - 10.9.x, configure the printer in the same way as you do in Mac OS X 10.10.x.
- When you use Mac OS X 10.6.x, open [Print & Fax] from [System Preferences] and configure the printer referring to the procedure below.

1 Open System Preferences and click [Print & Scan] (for Mac OS X 10.7.x or 10.8.x) or [Printers & Scanners] (for Mac OS X 10.9.x or 10.10.x).**2 Click [+].**

3 Click [IP] and specify the items as described below.



- Address:** <IP address or DNS name of this equipment>
Protocol: Internet Printing Protocol - IPP
Queue: Print
Name: <Any Name>
Location: <Any Name>
Use: TOSHIBA e-STUDIO2309A for e-STUDIO2309A
 TOSHIBA e-STUDIO2809A for e-STUDIO2809A
 TOSHIBA e-STUDIO2802A for e-STUDIO2802A
 TOSHIBA e-STUDIO2802AM for e-STUDIO2802AM
 TOSHIBA e-STUDIO2802AF for e-STUDIO2802AF

Tips

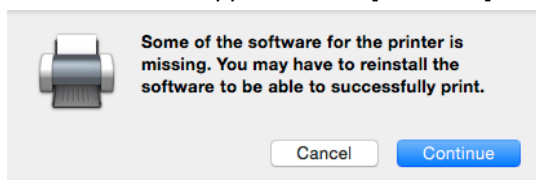
- In the [Name] box, the name that is entered in the [Address] box is automatically displayed.
- Even when you enter the IP address or DNS name of this equipment in the [Address] box, the correct name might not be selected in the [Use] box. Select [Other] in the [Use] box and select the correct PPD file for the equipment from the [/Library/Printers/PPDs/Contents/Resources/en.lproj] folder.
 - EST2309A.ppd for e-STUDIO2309A
 - EST2809A.ppd for e-STUDIO2809A
 - EST2802A.ppd for e-STUDIO2802A
 - EST2802AM.ppd for e-STUDIO2802AM
 - EST2802AF.ppd for e-STUDIO2802AF

4 Click [Add].

The Installable Options window appears.

Tip

If the screen below appears, click [Continue] to continue the printer setup.



5 Set the following options.

For e-STUDIO2309A/2809A:

Drawer 2 — Select this when the drawer 2 is installed.

Drawer 2 and 3 — Select this when the drawer 2 and 3 are installed.

Drawer 2, 3 and 4 — Select this when the drawer 2, 3 and 4 are installed.

ADU — Select the check box to use the Automatic Duplexing Unit.

For e-STUDIO2802A/2802AM/2802AF:

ADU — Select the check box to use the Automatic Duplexing Unit.

-
- 6** Click [OK].
The printer is added to the Printer List.

□ Configuring USB printing

- 1** Connect to your PC using a USB cable.
- 2** Open System Preferences and click [Print & Scan] (for Mac OS X 10.7.x or 10.8.x) or [Printers & Scanners] (for Mac OS X 10.9.x or 10.10.x).
- 3** Set the following options.
 - Drawer 2** — Select this when the drawer 2 is installed.
 - Drawer 2 and 3** — Select this when the drawer 2 and 3 are installed.
 - Drawer 2, 3 and 4** — Select this when the drawer 2, 3 and 4 are installed.
 - ADU** — Select the check box to use the Automatic Duplexing Unit.
- 4** Click [OK].

Uninstalling the Printer from Mac OS X

In order to uninstall the printer from Mac OS X, delete the PPD file and other files in the following folders.

- For e-STUDIO2309A:
Library/Printers/PPDs/Contents/Resources/en.lproj/EST2309A.ppd
- For e-STUDIO2809A:
Library/Printers/PPDs/Contents/Resources/en.lproj/EST2809A.ppd
- For e-STUDIO2802A:
Library/Printers/PPDs/Contents/Resources/en.lproj/EST2802A.ppd
- For e-STUDIO2802AM:
Library/Printers/PPDs/Contents/Resources/en.lproj/EST2802AM.ppd
- For e-STUDIO2802AF:
Library/Printers/PPDs/Contents/Resources/en.lproj/EST2802AF.ppd
- For e-STUDIO2309A/2809A:
Library/Printers/toshiba/ES2809ASeries
- For e-STUDIO2802A/2802AM/2802AF:
Library/Printers/toshiba/ES2802ASeries

4


INSTALLATION IN UNIX/Linux


This chapter explains the installation in UNIX/Linux.


Configuring the Printer Using CUPS	36
Configuring the printer for LPR printing	36
Configuring the printer for IPP printing	37
Configuring the print options	39
Uninstalling the Printer from UNIX/Linux	41

Configuring the Printer Using CUPS

Refer to the following pages to install the PPD file and configure the printer in UNIX/Linux for LPR printing, IPP printing or USB printing.

 P.36 “Configuring the printer for LPR printing”

 P.37 “Configuring the printer for IPP printing”

 P.38 “Configuring the printer for USB printing”

■ Configuring the printer for LPR printing

To set up CUPS, copy the PPD file onto the UNIX/Linux workstation, install the printer, and then configure PPD. You can use a browser to install the printer and configure PPD.

After extracting the PPD file, restart the CUPS daemon.

- 1** Insert the Install Disc into the disc drive.
- 2** Log on to the root account.
- 3** Install the RPM package with the rpm command.
- 4** Enter the following command:

```
service cups start
```

Note

If the CUPS has already been started, stop the CUPS service once by entering “service cups stop” command, and then enter the above command to restart the CUPS service.

- 5** Open the browser and locate CUPS by typing “http://localhost:631/” in the address box.

Tip

When you use Red Hat Linux, access CUPS with the following command:

```
/usr/bin/cupsconfig
```

- 6** Click [Add Printer] on the [Administration] tab.
- 7** Select [LPD/LPR Host or Printer] and click [Continue].
- 8** Enter “lpd://<IP address>/Print” in the [Connection] box and click [Continue].

Note

Make sure to capitalize the “P” in “Print” for the device URI.

- 9** Enter the printer name, description, and location of the printer in each box, and click [Continue].

Note

If a new printer name is a duplicate of a name already in the printer list, the new printer will replace the original printer.


- 10** Select [Toshiba] in the [Make] box and click [Continue].

Note

If you do not see [TOSHIBA] in the [Make] list, restart CUPS.

- 11** Select the model name in the [Model] list and click [Add Printer].

- 12** Go to the following page for configuring the print options:

 P.39 “Configuring the print options”

■ Configuring the printer for IPP printing

When you want to set up an IPP print queue in the Linux OS, follow the procedures here.

- 1** Insert the Install Disc into the disc drive.
- 2** Log on to the root account.
- 3** Install the RPM package with the rpm command.
- 4** Enter the following command:

```
service cups start
```

Note

If the CUPS has already been started, stop the CUPS service once by entering “service cups stop” command, and then enter the above command to restart the CUPS service.

- 5** Open the browser and locate CUPS by typing “http://localhost:631/” in the address box.

Tip


When you use Red Hat Linux, enter the following command to access “Common UNIX Printing System” page.

```
/usr/bin/cupsconfig
```

- 6** Click [Add Printer] on the [Administration] tab.
- 7** Select “Internet Printing Protocol (http)” and click [Continue].
- 8** Enter “http://<IP address>:631/Print” in the [Connection] box and click [Continue].
- 9** Enter the printer name, description, and location of the printer in each box, and click [Continue].

Note


If a new printer name is a duplicate of a name already in the printer list, the new printer will replace the original printer.

- 10** Select [Toshiba] in the [Make] box and click [Continue].
- 11** Select the model name in the [Model] box and click [Add Printer].
- 12** Confirm that the message notifying that the new printer has been properly added appears.
- 13** Go to the following page for configuring the print options:
 P.39 “Configuring the print options”

■ Configuring the printer for USB printing

When you want to set up an USB print queue in the Linux OS, follow the procedures here.

- 1** Insert the Install Disc into the disc drive.
- 2** Log on to the root account.
- 3** Install the RPM package with the rpm command.
- 4** Enter the following command:

```
service cups start
```
- 5** Connect to your PC using a USB cable..
- 6** Go to the following page for configuring the print options:
 P.39 "Configuring the print options"

■ Configuring the print options

You can set the print options that are applied to the print jobs using CUPS.

- 1** Click the **[Manage Printers]** link on the **[Administration]** tab.
 - 2** Select this equipment and then click **[Set Default Options]**.
 - 3** Configure the print options on the displayed page.
- The underscored items are set by default.

Installed Options

Option Value	Alternative Value	Description
Drawers	<u>Not Installed</u> Drawer 2 Drawer 2 and 3 Drawer 2,3 and 4	Select an optional drawer.
ADU	<u>Installed</u> Not Installed	Select the Automatic Duplexing Unit option.
[Set Default Options] button	Determines the selected items.	

General

Option Value	Alternative Value	Description
Media Size	A3, A4, A5, J Post Card, B4, B5, Folio, <u>Letter</u> , Ledger, Legal, Statement, Computer, 13" LG, 8.5" SQ, 8K, 16K, Env DL, Env Cho-3, Env You-4, Env-Com10, Env-Monarch, Env-C4, Env-C5	Select the paper size.
Media Source	<u>Auto</u> (Default) Drawer 1 Drawer 2 Drawer 3 Drawer 4 Bypass Tray	Select the paper source.
Media Type	Printer's Default <u>Plain Paper</u> Thick Thick 1 Thick 2 Transparency Thin Envelope	Select the paper source.
Duplex	<u>Off</u>	1-sided printing
	Long Edge (Standard)	2-sided printing (Long-edge binding)
	Short Edge (Flip)	2-sided printing (Short-edge binding)
[Set Default Options] button	Determines the selected items.	

Printing Modes

Option Value	Alternative Value	Description
Department Code	<u>Disabled</u> Enabled	Select whether or not to use the department codes for printing. When this equipment is managed under the department codes, this option should be enabled.
Distinguish Thin Lines	<u>Off</u> , On	Select the function to distinguish thin lines.
Do not Print Blank Pages	<u>Off</u> , On	Select the function to print blank pages.
[Set Default Options] button	Determines the selected items.	

Printing Modes DC

Option Value	Alternative Value	Description
Department Code (DC) - Digit 1 to Digit 5	<u>0</u> to 9	Specify the 5-digit department code when "Department Code" of "Printing Modes" is enabled. For the appropriate department code, ask your system administrator.
[Set Default Options] button	Determines the selected items.	

Quality

Option Value	Alternative Value	Description
Halftone	<u>Detail</u> Smooth	Select how halftone images are printed.
Smoothing	On, <u>Off</u>	Select whether text and graphics are printed smoothly.
Toner Save	On, <u>Off</u>	Select whether toner is saved for printing.
[Set Default Options] button	Determines the selected items.	

Uninstalling the Printer from UNIX/Linux

To uninstall a printer that you have created, carry out the following procedure.

- 1** Click the **[Manage Printers]** link on the startup page.
- 2** Select the model, and then select **[Delete Printer]**.
- 3** Click **[Delete Printer]**.
- 4** Uninstall the installed RPM package with the rpm command.

INDEX

C

Client Utilities/User Documentation DVD	
Windows	8
CUPS	
UNIX/Linux	10

E

e-STUDIO Scan Editor	8
----------------------------	---

I

Install	
Mac OS X	26
UNIX/Linux	36
Windows	14
Installer	
Windows	14
IPP printing	
Mac OS X	31
UNIX/Linux	37

L

LPR printing	
Mac OS X	29
UNIX/Linux	36

N

N/W Fax driver	
Windows	8
Network connection	12

P

Plug and Play	
Windows	17
PostScript Printer Description file	
Mac OS X	9
PPD file	
Mac OS X	9
UNIX/Linux	10
Print options	
UNIX/Linux	39
Printer driver	
Windows	8

S

Scanner driver	
Windows	8
System requirements	
Mac OS X	9
UNIX/Linux	10
Windows	8

U

Uninstall	
Mac OS X	34
UNIX/Linux	41
Windows	20
Uninstalling	20
USB connection	11
USB printing	
Mac OS X	33
UNIX/Linux	38

MULTIFUNCTIONAL DIGITAL SYSTEMS

Software Installation Guide

e-STUDIO2802A/2802AM/2802AF

e-STUDIO2309A/2809A

TOSHIBA TEC CORPORATION

1-11-1, OSAKI, SHINAGAWA-KU, TOKYO, 141-8562, JAPAN

