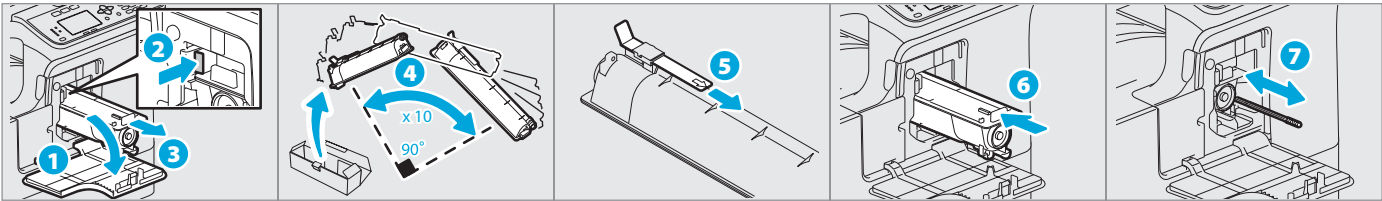


Troubleshooting

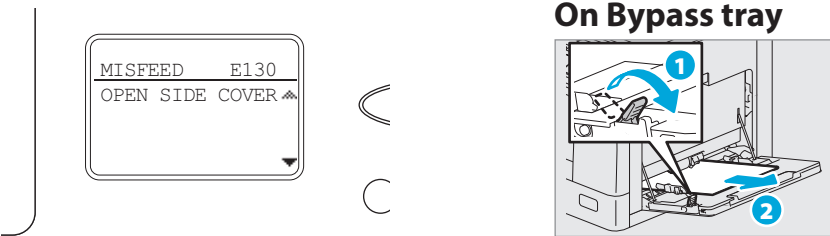
Toner empty

User's Guide: Chapter 7

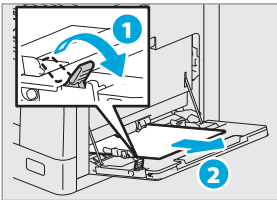


Paper misfeed

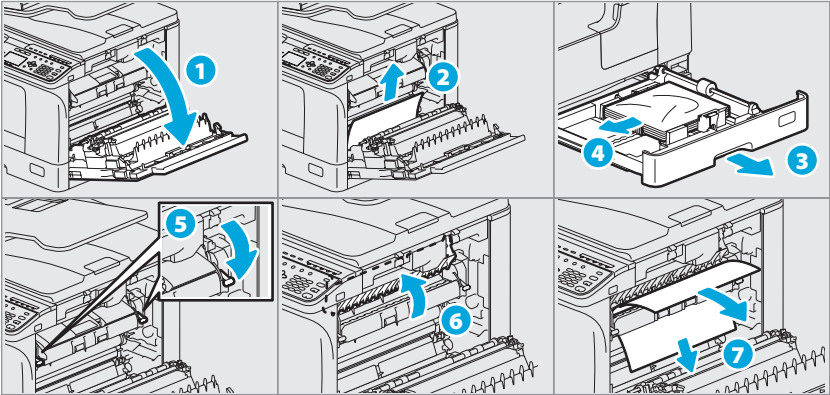
User's Guide: Chapter 7



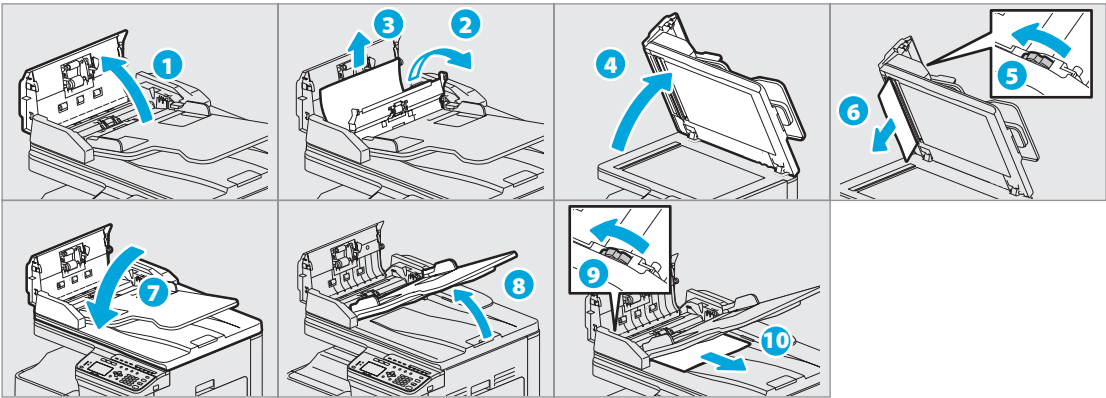
On Bypass tray



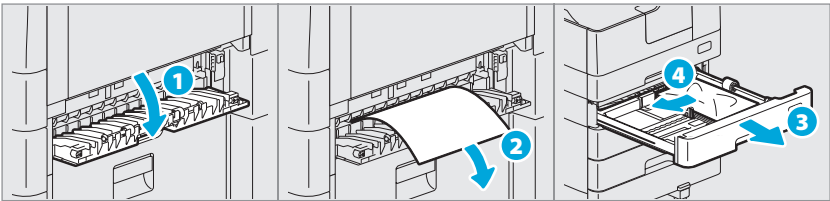
In Side cover



In RADF

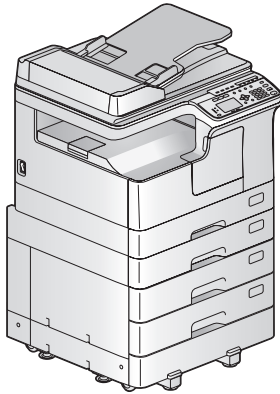


In PFU



TOSHIBA
Leading Innovation >>>

MULTIFUNCTIONAL DIGITAL SYSTEMS
e-STUDIO2309A/2809A



Quick Guide

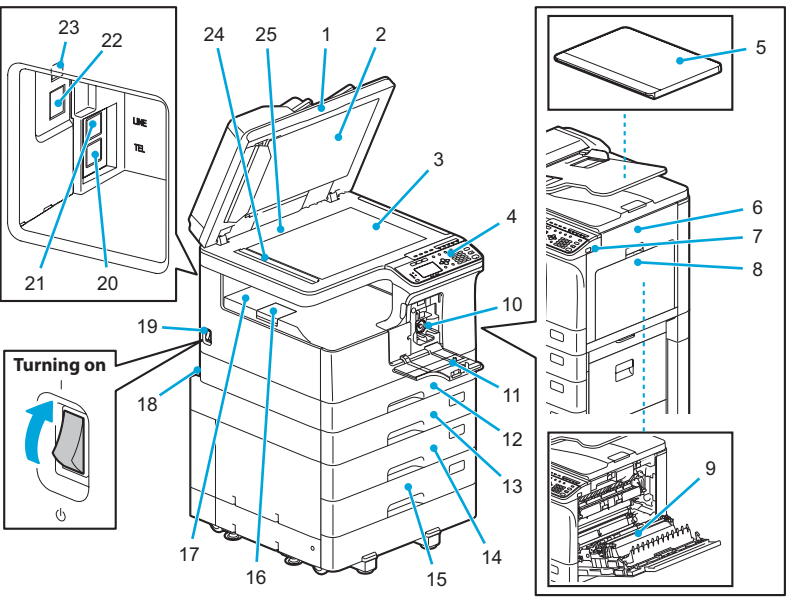
This manual describes the components, preparations, basic operations, and troubleshooting for the equipment. **Before using the equipment, read the Safety Information (Printouts).** The DVD bundled with the equipment contains the manuals (PDF file).

Trademarks
Company names and product names in this manual are the trademarks of their respective companies.

Component Description

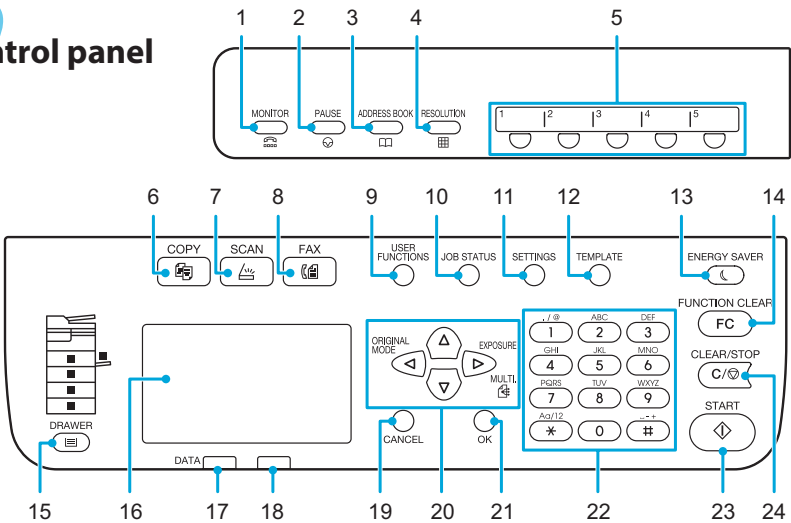
Equipment

User's Guide: Chapter 1



- 1. Reversing Automatic Document Feeder (RADF)*
- 2. Platen sheet
- 3. Original glass
- 4. Control panel
- 5. Platen Cover*
- 6. Side cover
- 7. USB port
- 8. Bypass tray
- 9. Automatic Duplexing Unit
- 10. Toner cartridge
- 11. Front cover
- 12. Drawer
- 13. Paper Feed Unit (PFU)*
- 14. Paper Feed Pedestal*
- 15. Drawer Module*
- 16. Paper exit stopper
- 17. Receiving tray
- 18. AC-IN terminal (rear)
- 19. Power switch
- 20. TEL*
- 21. LINE*
- 22. Network interface connector
- 23. USB terminal (4-pin)
- 24. Scanning area
- 25. Original scale

Control panel



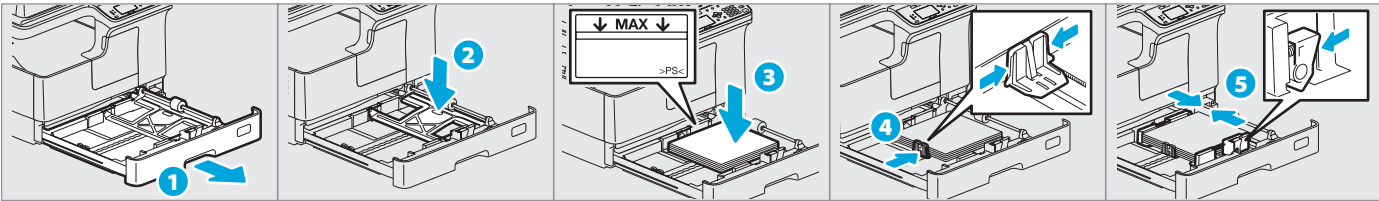
- 1. MONITOR*
 - 2. PAUSE*
 - 3. ADDRESS BOOK*
 - 4. RESOLUTION*
 - 5. One Touch*
 - 6. COPY
 - 7. SCAN
 - 8. FAX
 - 9. USER FUNCTIONS
 - 10. JOB STATUS
 - 11. SETTINGS
 - 12. TEMPLATE
 - 13. ENERGY SAVER
 - 14. FUNCTION CLEAR
 - 15. DRAWER
 - 16. LCD screen
 - 17. DATA
 - 18. Alert lamp
 - 19. CANCEL
 - 20. Δ▽◀▶
 - 21. OK
 - 22. Digital keys
 - 23. START
 - 24. CLEAR/STOP
- * optional

Before Use

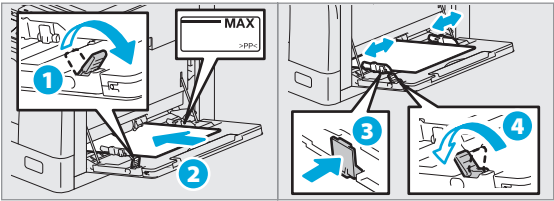
Loading paper

User's Guide: Chapter 1

Drawer



Bypass tray



To set paper size of Drawer
When you load paper in the drawer, a pop-up window appears. Follow the instructions and set the paper size. (When the "POP UP" function is set to "ENABLE".)

Driver installation

Software Installation Guide: Chapter 2

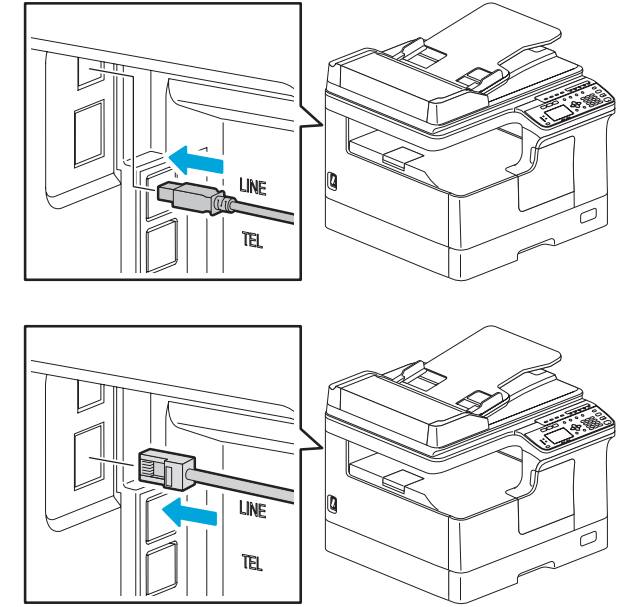
Installing the driver requires the administrator authority. For Windows 7, Windows 8, Windows Server 2008 R2, or Windows Server 2012, use the installer.

Note when installing from installer

- Close all running applications.
- If the installer does not automatically start, double-click "Setup.exe" in the DVD.

Connecting computer

Before installing the drivers, connect the equipment and the computer with a USB cable or Network interface cable.



Using installer

1. Close all running applications.
2. Make sure that the equipment is turned on.
3. Insert the DVD into the computer.
4. Double-click "Setup.exe".
5. Follow the on-screen instructions.

Printer and scanner functions are available.

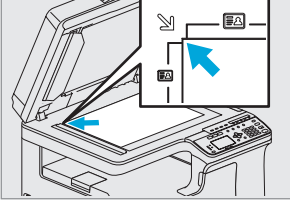
Basic Operations

Copier

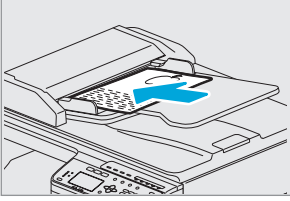
User's Guide: Chapter 2

1. Place the original(s).

Original glass



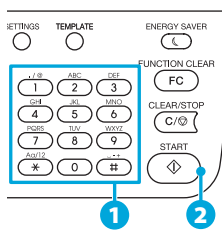
RADF



2. Press [COPY] and make the copy settings.



3. Enter the number of copies with the digital keys 1, and then press [START] 2 to copy.

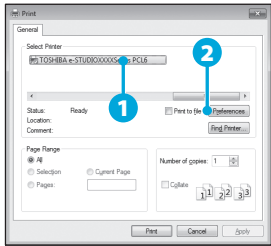


- To stop copying**
Press [CLEAR/STOP]
- To reset settings and LCD screen after copying**
Press [FUNCTION CLEAR]
- Shortcut keys**
Press <: "ORIGINAL MODE"
Press >: Europe and Americas "EXPOSURE", Except Europe and Americas "ID CARD"

Printer

User's Guide: Chapter 3

1. Select [Print] from the application's [File] menu.
2. Select your printer 1, and then click [Preferences] 2.



3. Make print option settings, and then click [OK].
4. Click [Print] ([OK]).

Scanner

User's Guide: Chapter 5

Scan to USB Memory

1. Place the original(s).
2. Press [SCAN].
3. Connect the USB storage device to the equipment and wait a few seconds.
4. Press ∇ or ▲ to select "USB", and then press [OK].
5. Press > to make the scan settings as required.
6. Press [START] to scan your documents.

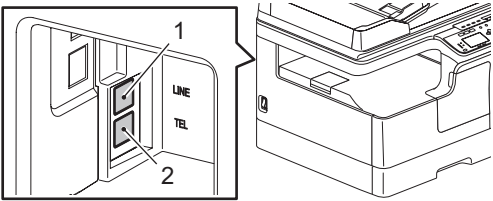
TWAIN Scan

1. Place the original(s).
2. Launch a TWAIN-compliant application.
3. Select the device from the application's [File] menu.
4. Select the menu to scan from the application's [File] menu.
5. Make the scan settings, and then click [Scan].

Fax

Fax Guide

Connecting Cables



1. LINE Connect a telephone line.
2. TEL Connect an external telephone.

Sending a Fax

1. Place the original(s).
2. Press [FAX].
3. Make settings for transmission conditions.
4. Specify the destination.
5. Press [START].

Registering an Address Book

1. Press [USER FUNCTIONS].
2. Select "ADDRESS BOOK" → "PHONE BOOK".
3. Make settings for "SPEED DIAL", "GROUP DIAL", and "ONE TOUCH", and then press [OK].